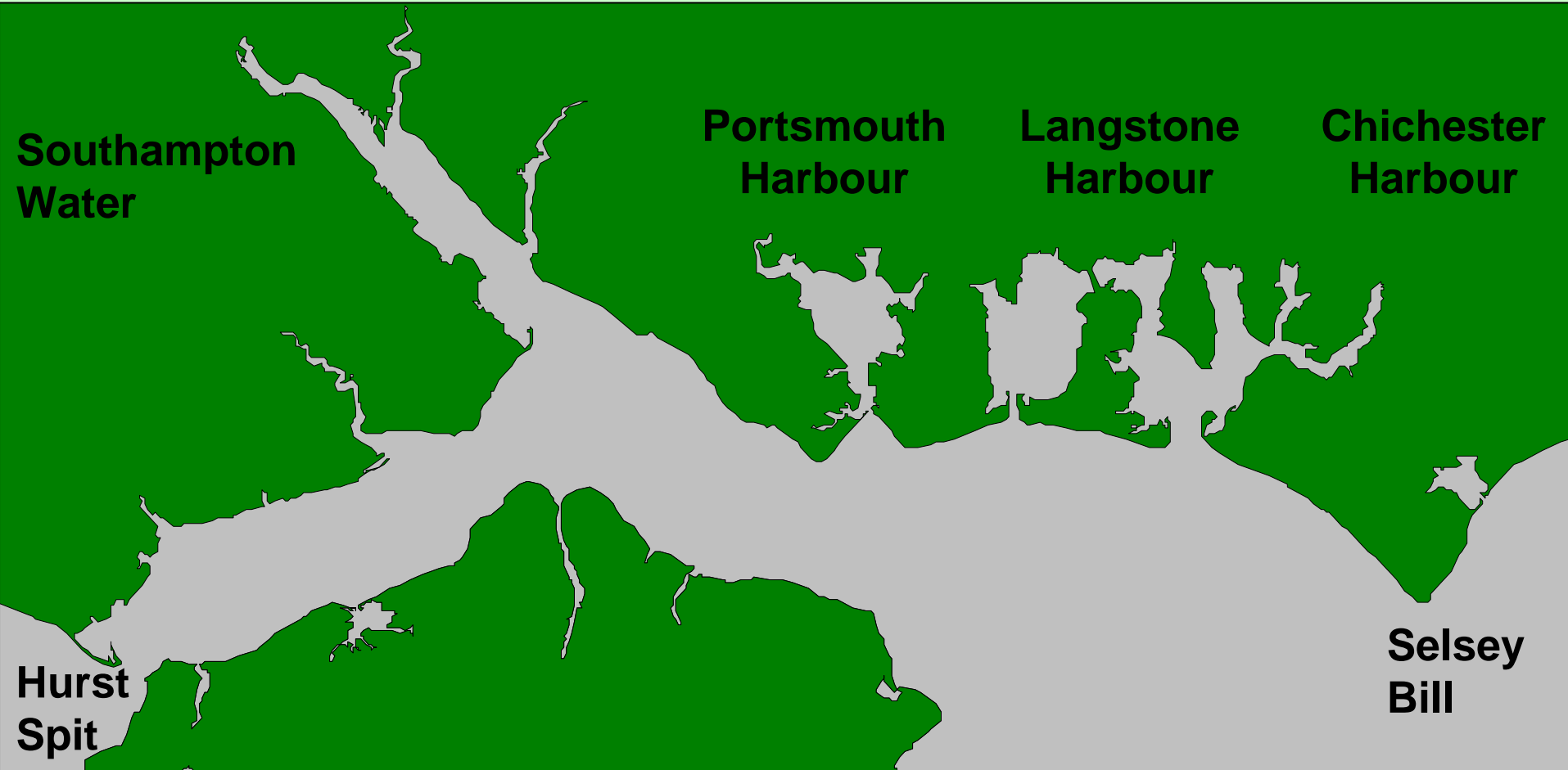


3 North Solent Shoreline Management Plan

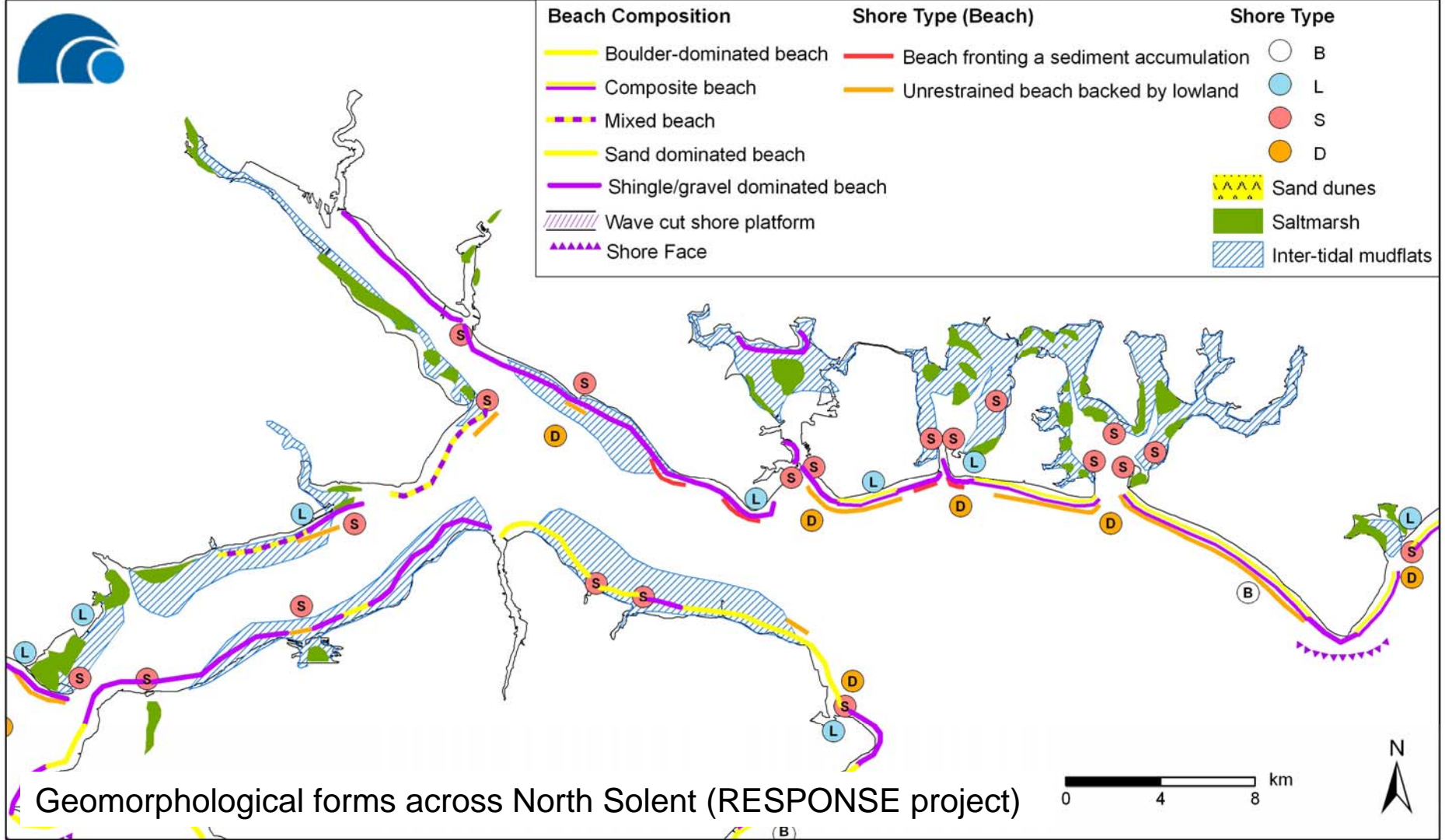


Selsey Bill to Hurst Spit (388km of shoreline)
including Chichester, Langstone and Portsmouth Harbours,
Southampton Water and the tidal reaches of the main rivers

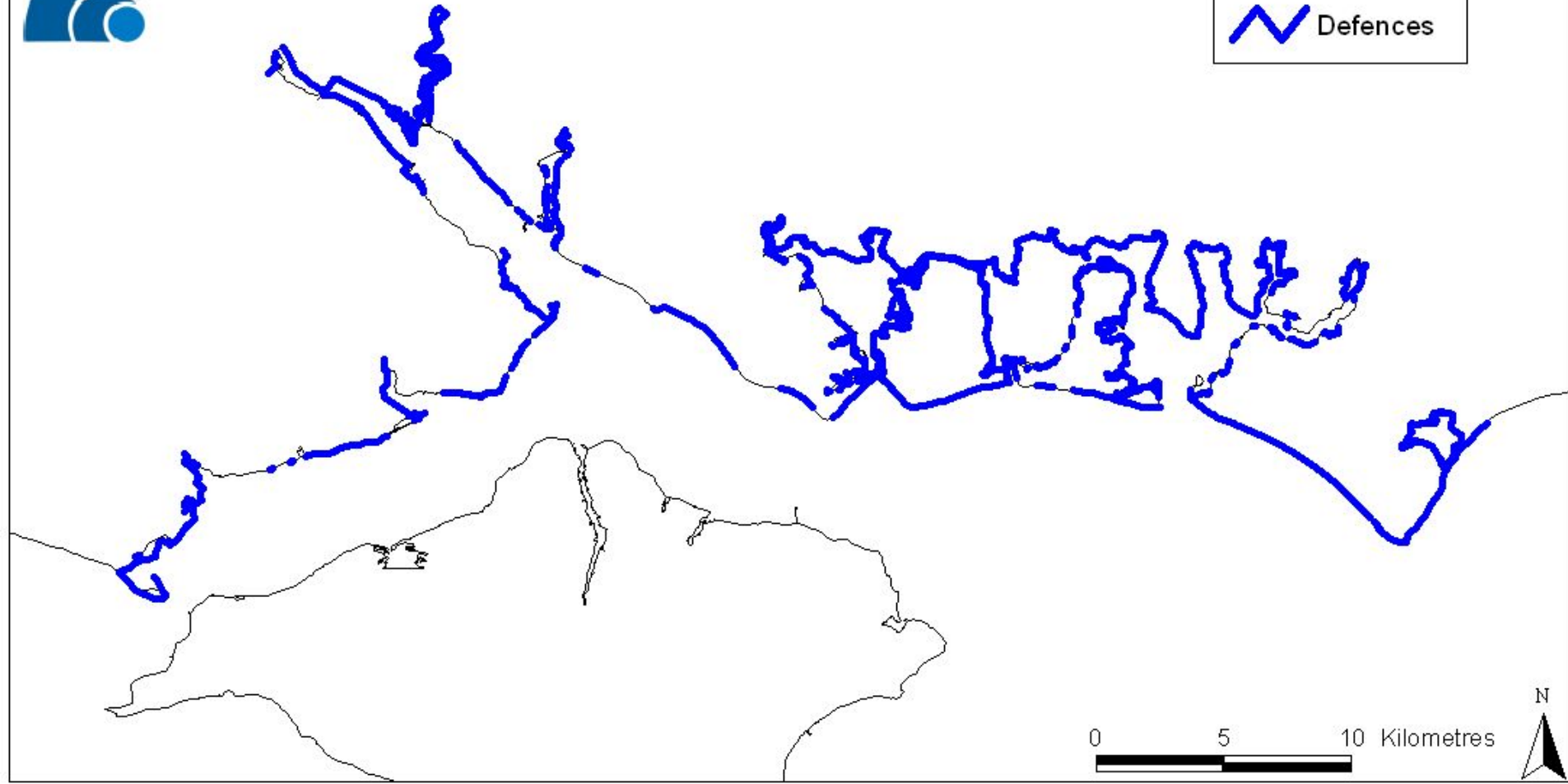
Policy Units



Single policy applied to each defined length of shoreline, based on coastal processes and features and issues



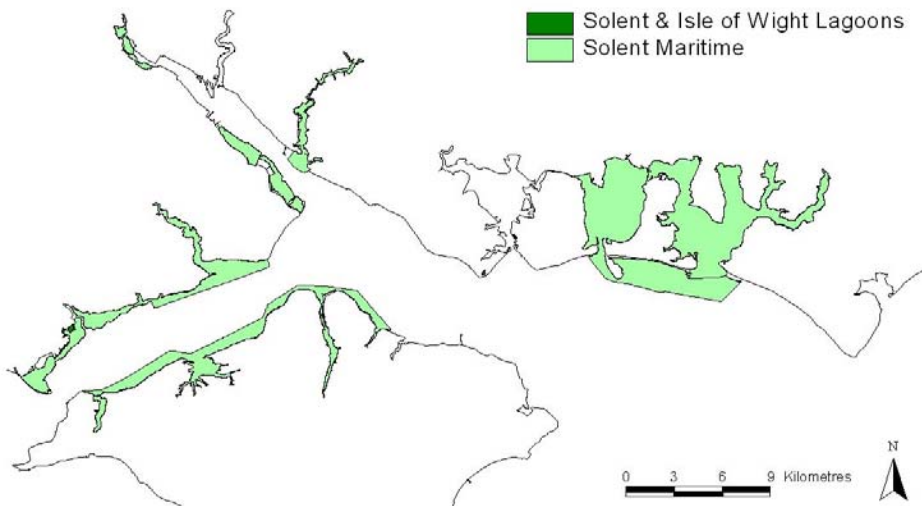
Wide variety of habitat types includes the most vulnerable to climatic changes and rising sea levels - saltmarshes, soft cliffs and barrier beaches and spits



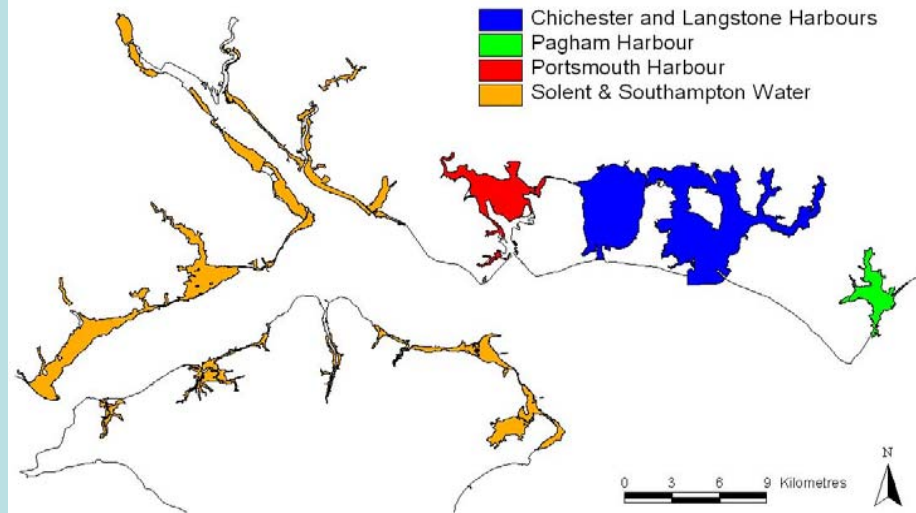
Approx 80% of the SWWA shoreline is defended or has active beach management

Private owners maintain approx 50% of shoreline

Special Areas of Conservation in the North Solent SMP area

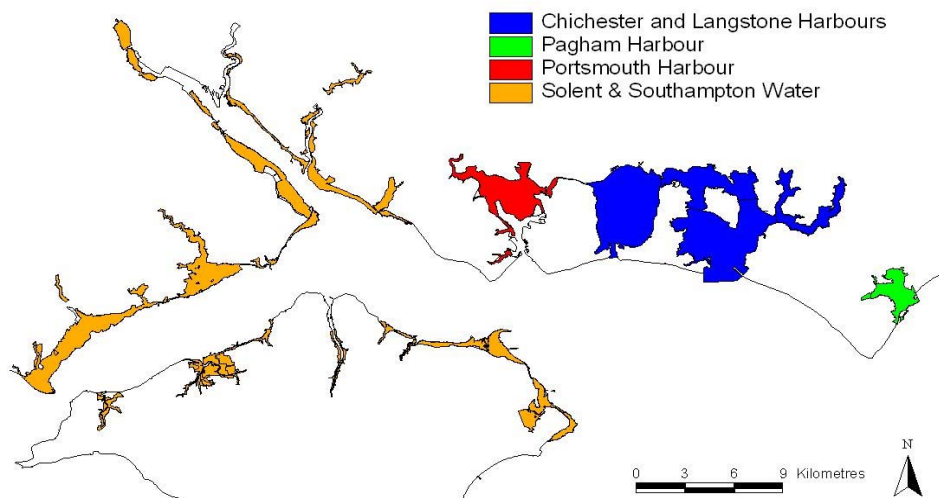


Ramsar sites in the North Solent SMP area

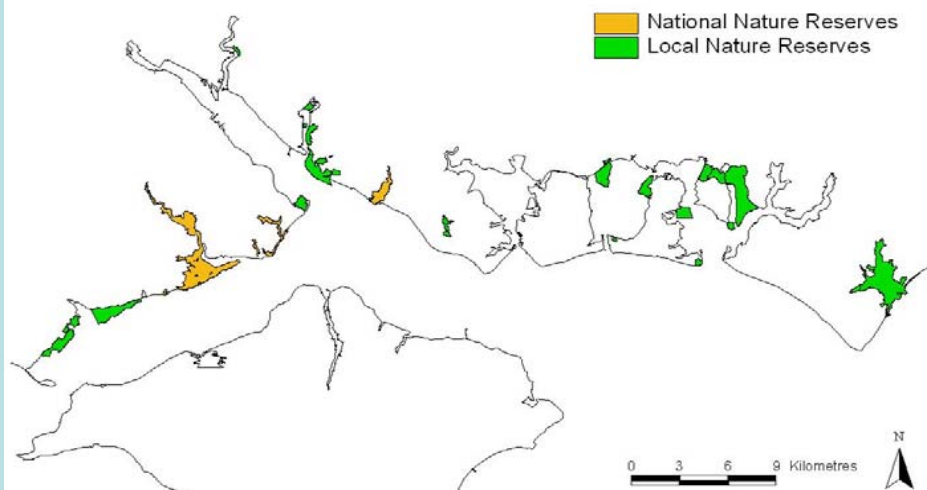


Approx 80% of SMP shoreline covered by International and/or European nature conservation designations

Special Protection Areas in the North Solent SMP area



National and Local Nature Reserves



Why is your involvement important for management of the Solent coastline?



- Opportunity to inform stakeholders of strategic coastal management issues
- Demonstrate that the coast is managed and monitored
- Raise public and political awareness of areas potentially at risk from tidal flooding and/or coastal erosion
- Consider all concerns and issues to determine achievable, realistic and functional policies

Why is your involvement important for management of the Solent coastline?



- Explain implications of potential shoreline evolution and climate change
- Promote appropriate development & prevent inappropriate development
- Discussions will improve understanding for both organisations and the public of issues and scope of SMP
- Benefit from local knowledge and observations
- Consultations aim to minimise / avoid conflicts and misunderstandings

How is the North Solent SMP relevant to you?

- Raise awareness of areas at risk from tidal flooding and/or coastal erosion, and implications of possible land use changes
- Opportunity to meet with others and share concerns and reassurances
- Ensure that your concerns are heard and considered
- Contribute to development of realistic and achievable policies for coastal defences

