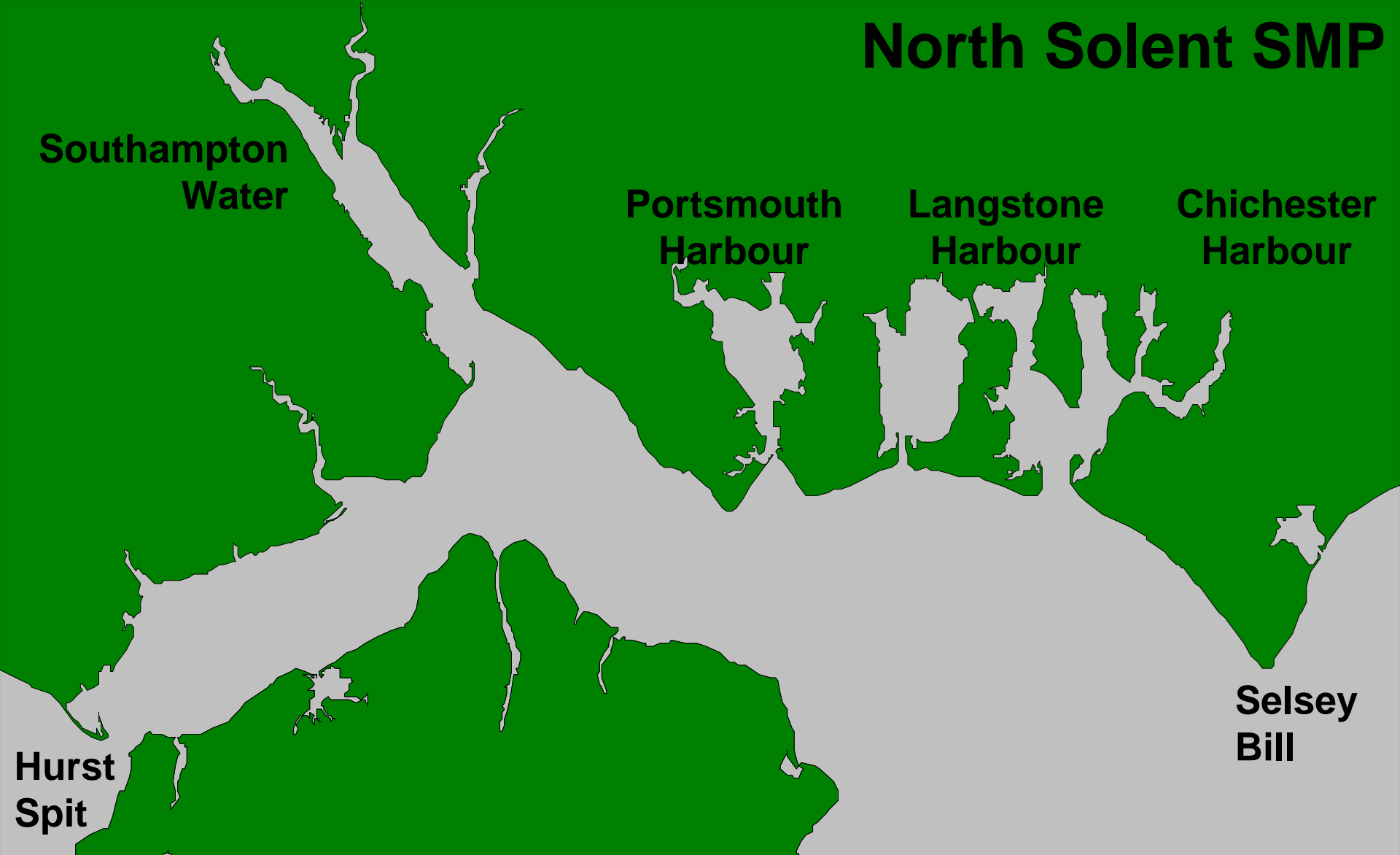


# North Solent SMP

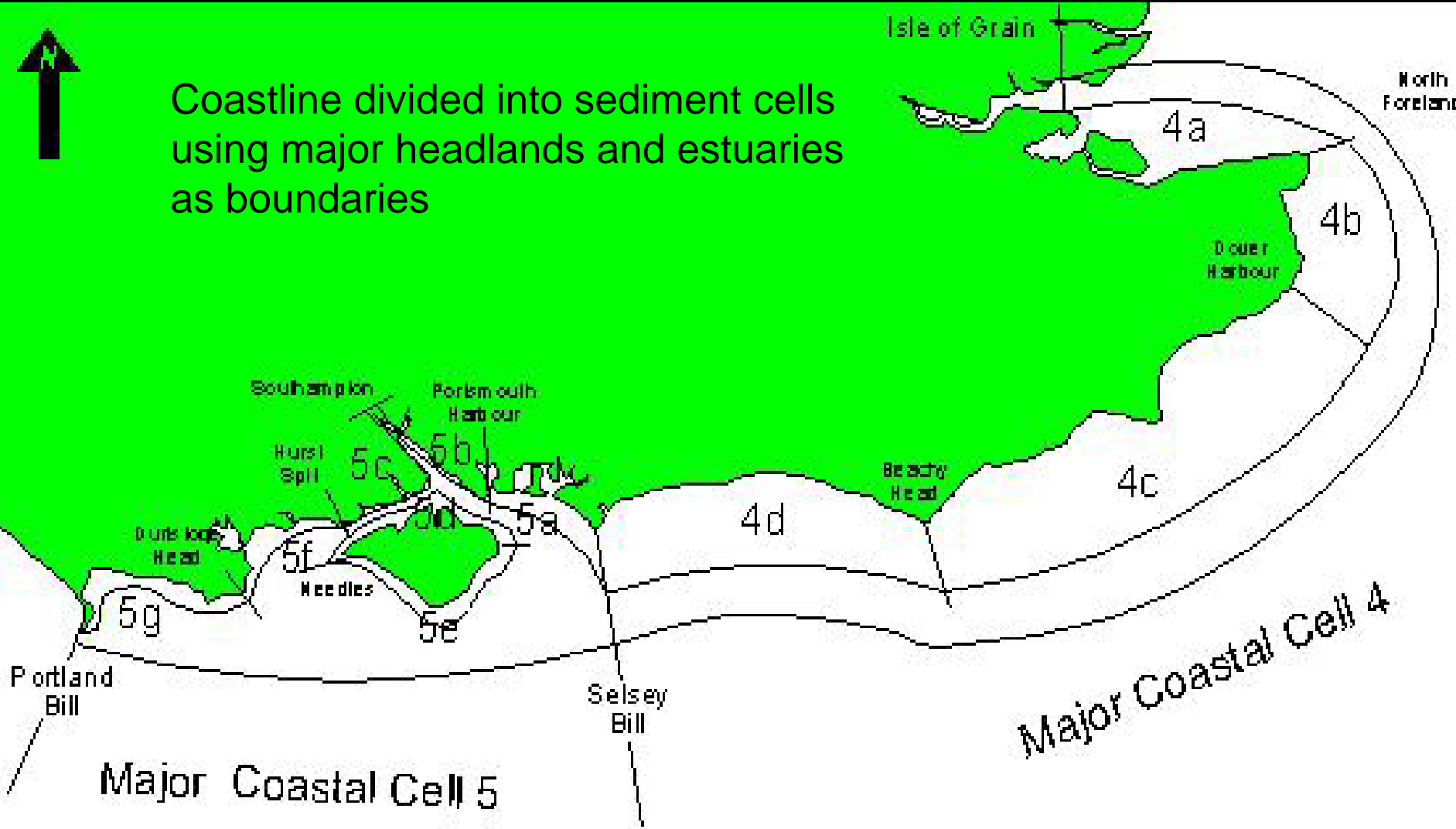


**Coastline divided into sediment cells using major headlands and estuaries as boundaries.**

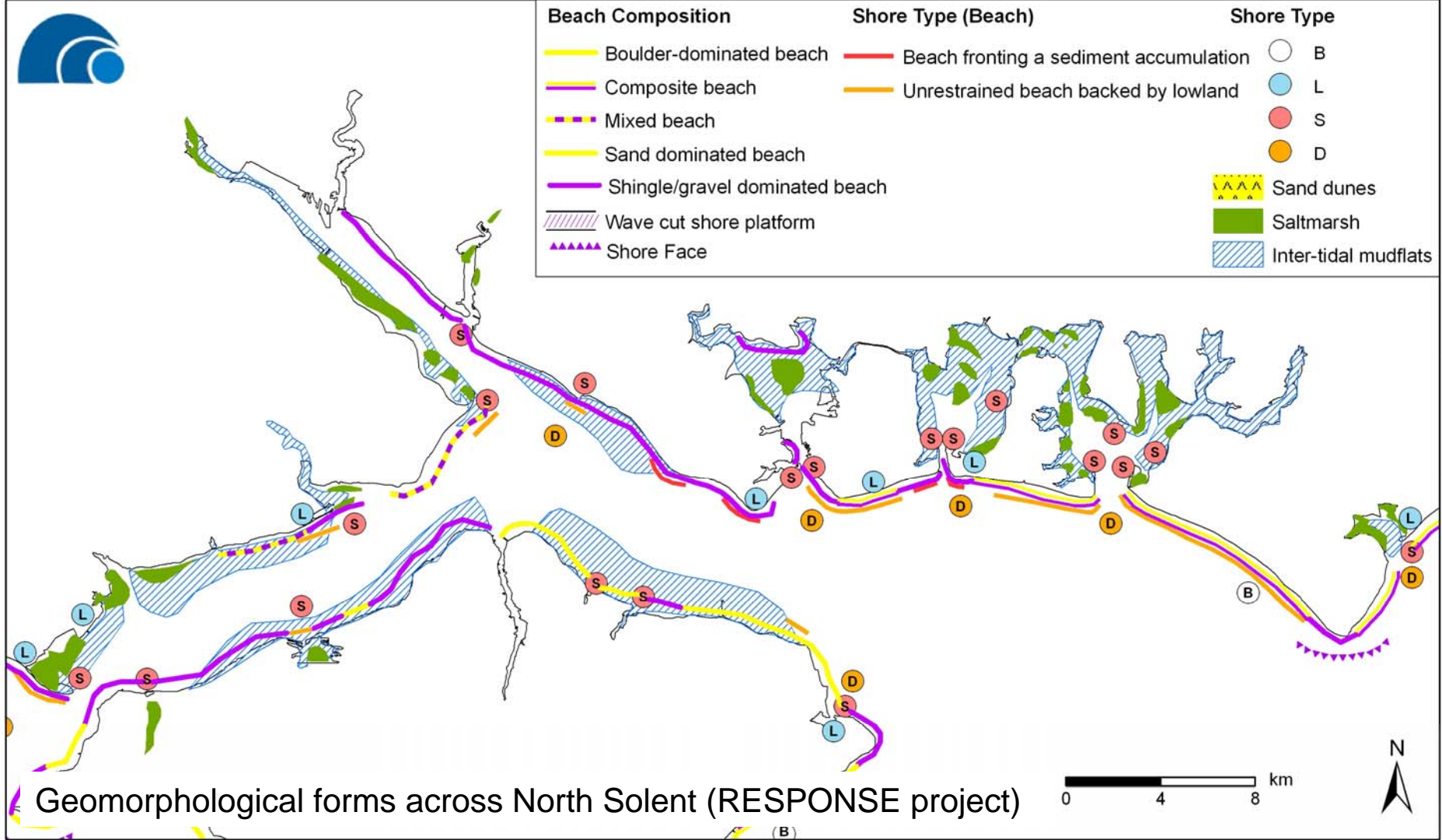
**SMPs are defined by coastal processes not political boundaries.**

↑

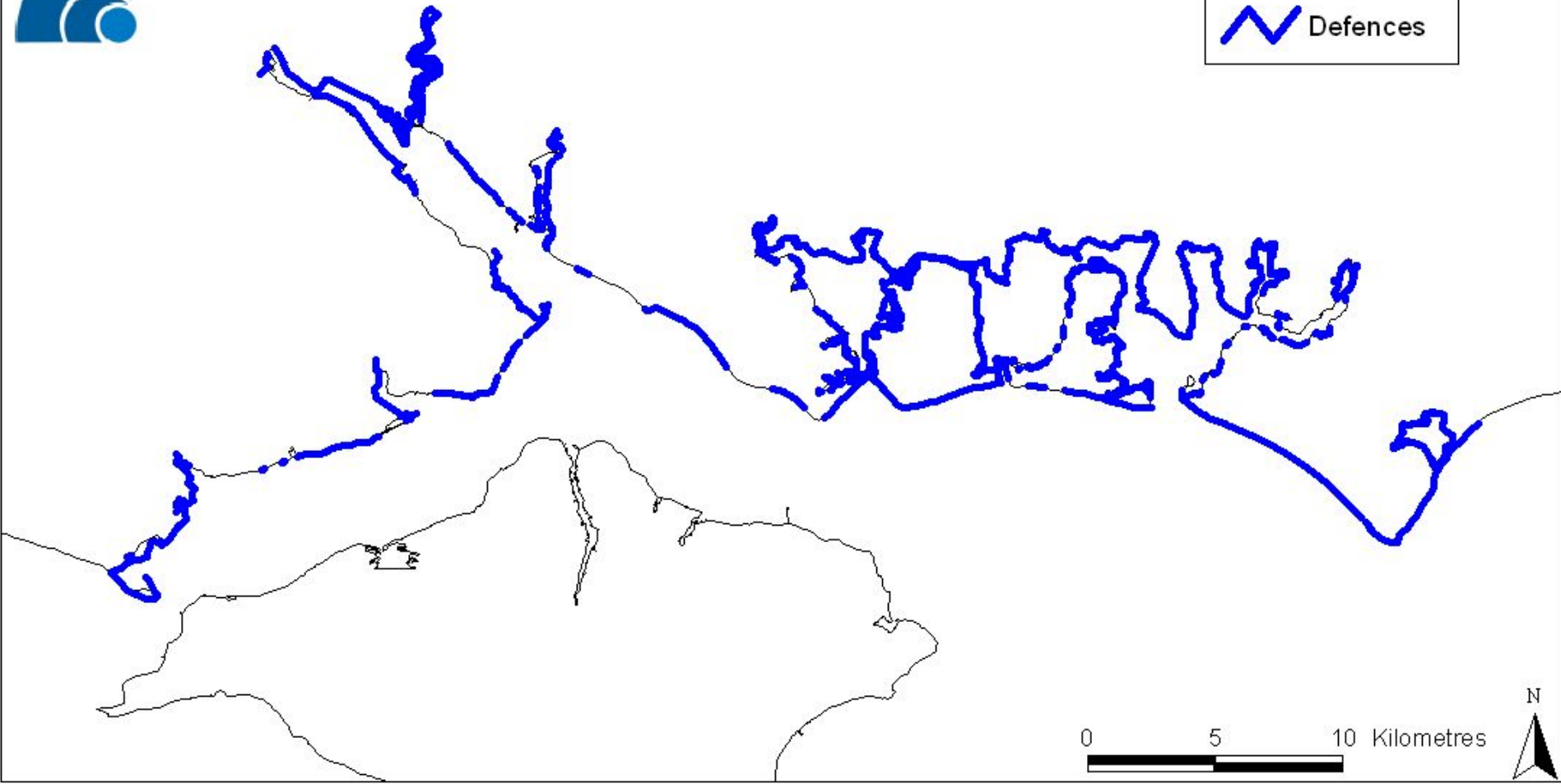
Coastline divided into sediment cells using major headlands and estuaries as boundaries



**SMPs are defined by coastal processes not political boundaries**

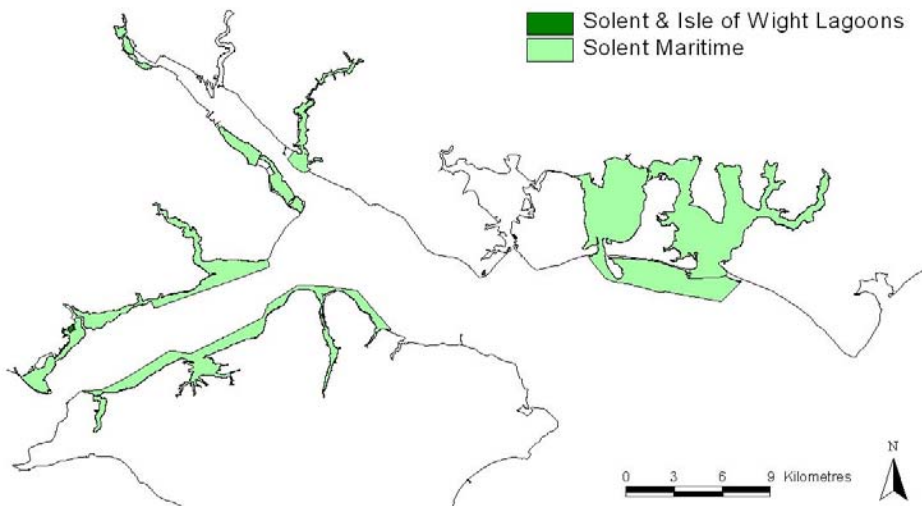


Wide variety of habitat types includes the most vulnerable to climatic changes and rising sea levels - saltmarshes, soft cliffs and barrier beaches and spits

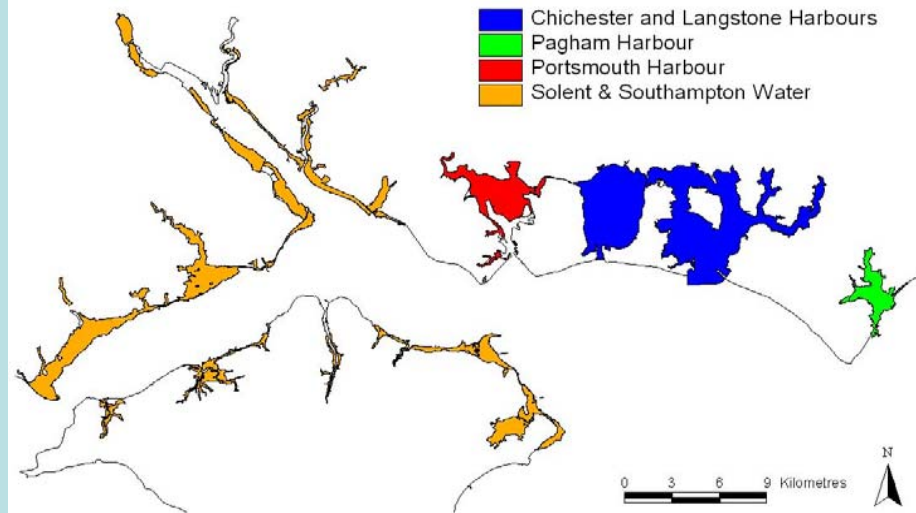


**Approx 77% of the SMP shoreline is defended or has active beach management, and approx 50% of these defences are privately owned**

Special Areas of Conservation in the North Solent SMP area

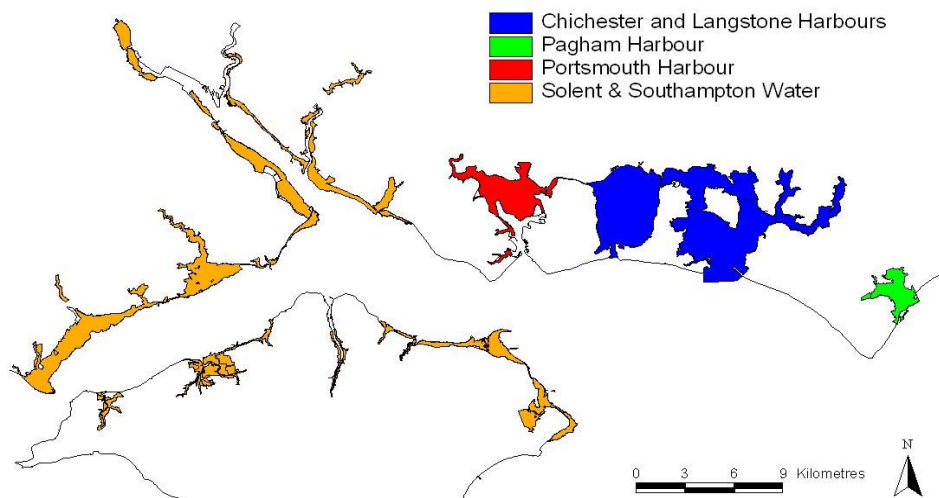


Ramsar sites in the North Solent SMP area

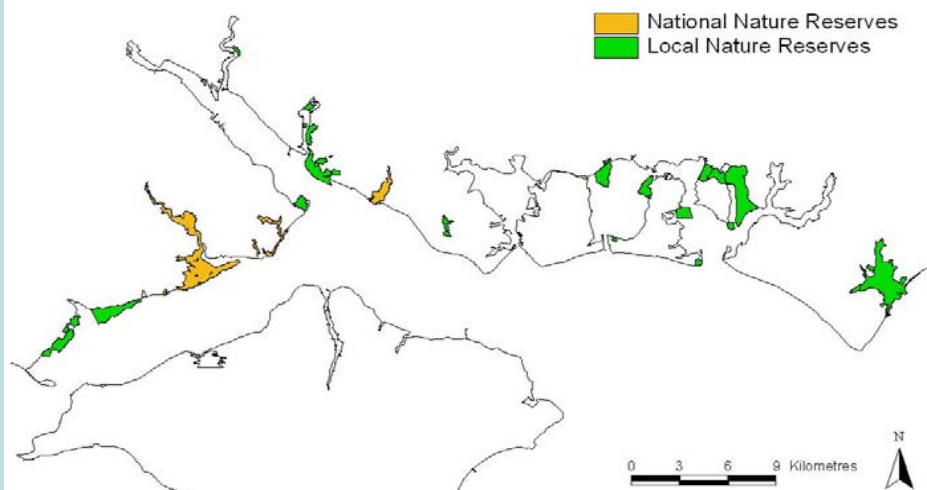


Approx 80% of SMP shoreline covered by International and/or European nature conservation designations

Special Protection Areas in the North Solent SMP area



National and Local Nature Reserves



Shoreline Overview		length of shoreline (km)
<p><b><u>Public funding is not</u></b> available for maintenance or improvements to existing defences (includes private individuals, private companies, Chichester Harbour Conservancy)</p>	30%	108
<p><b><u>Coastal and flood defence funding</u></b> (from central government) <b><u>is</u></b> available for maintenance or improvements to existing defences (includes Maritime Local Authorities &amp; Environment Agency)</p>	13%	48
<p><b><u>Other sources of public funding</u></b> (not coastal and flood defence funding) <b><u>is</u></b> available for maintenance or improvements to existing defences (includes MoD, Highways Agency, English Heritage, Crown Estate, County Councils)</p>	57%	200

# Defra Sea Level Rise Allowances

Administrative Region	Vertical Land Movement (mm/yr)	Net Sea Level Rise (mm/yr)				Previous allowances
		1990-2025	2025-2055	2055-2085	2085-2115	
Eastern England, East Midlands, London, <b>South East England</b>	<b>-0.8</b>	<b>4.0</b>	<b>8.5</b>	<b>12.0</b>	<b>15.0</b>	<b>6mm/yr</b>
South West and Wales	-0.5	3.5	8.0	11.5	14.5	5mm/yr
North West and North East England, Scotland	+0.8	2.5	7.0	10.0	13.0	4mm/yr

