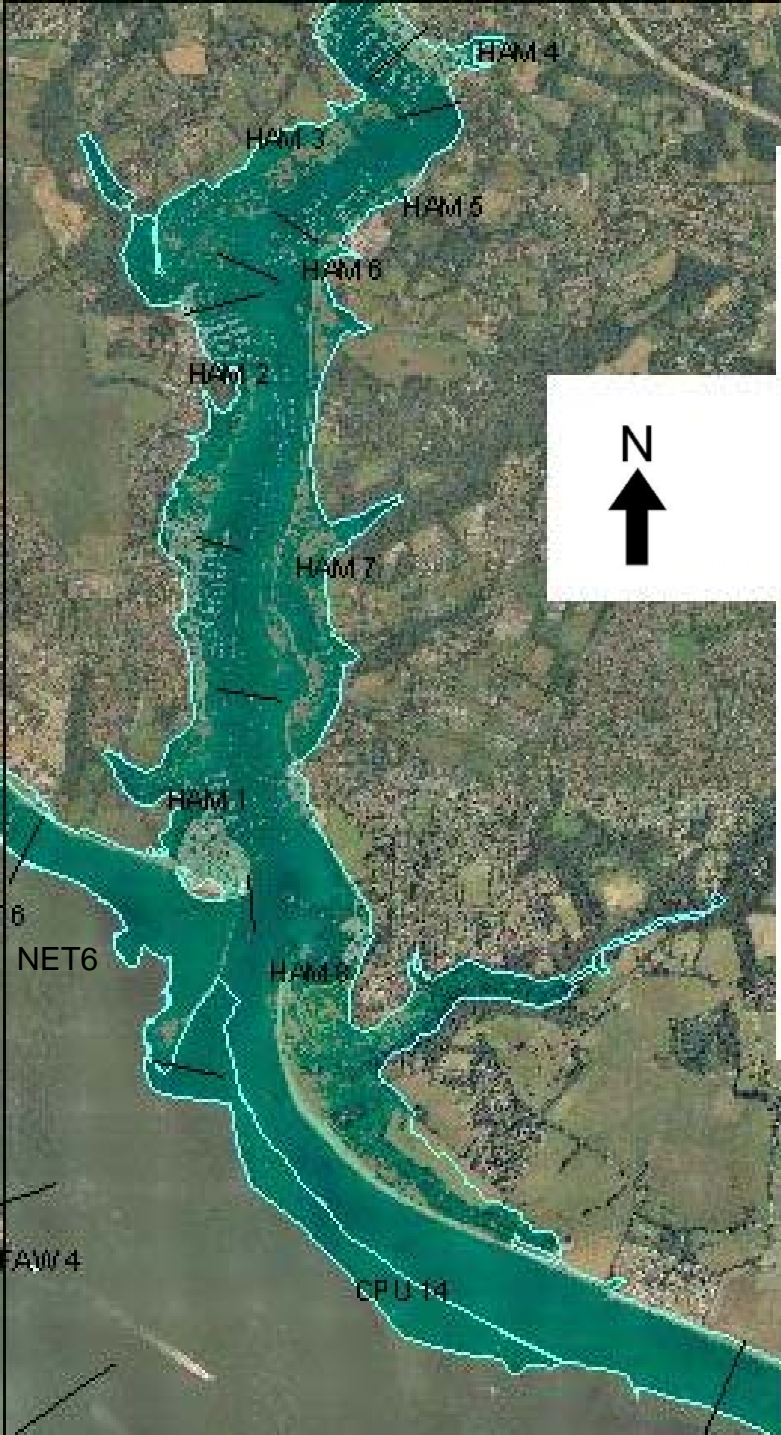


North Solent Shoreline Management Plan

- NET6 Hamble Oil Terminal to Hamble Common Point
- HAM1 Hamble Common Point to Satchell Marshes
- HAM2 Satchell Marshes to Badnam Creek
- HAM3 Badnam Creek to Lands End Lane
- HAM4 Lands End Lane to Swanwick Shore Road
- HAM5 Swanwick Shore Road to Crableck Marina
- HAM6 Crableck Marina
- HAM7 Crableck Marina to Warsash North
- HAM8 Warsash North to Hook Park
- CPU14 Solent Breezes to Hook Lake

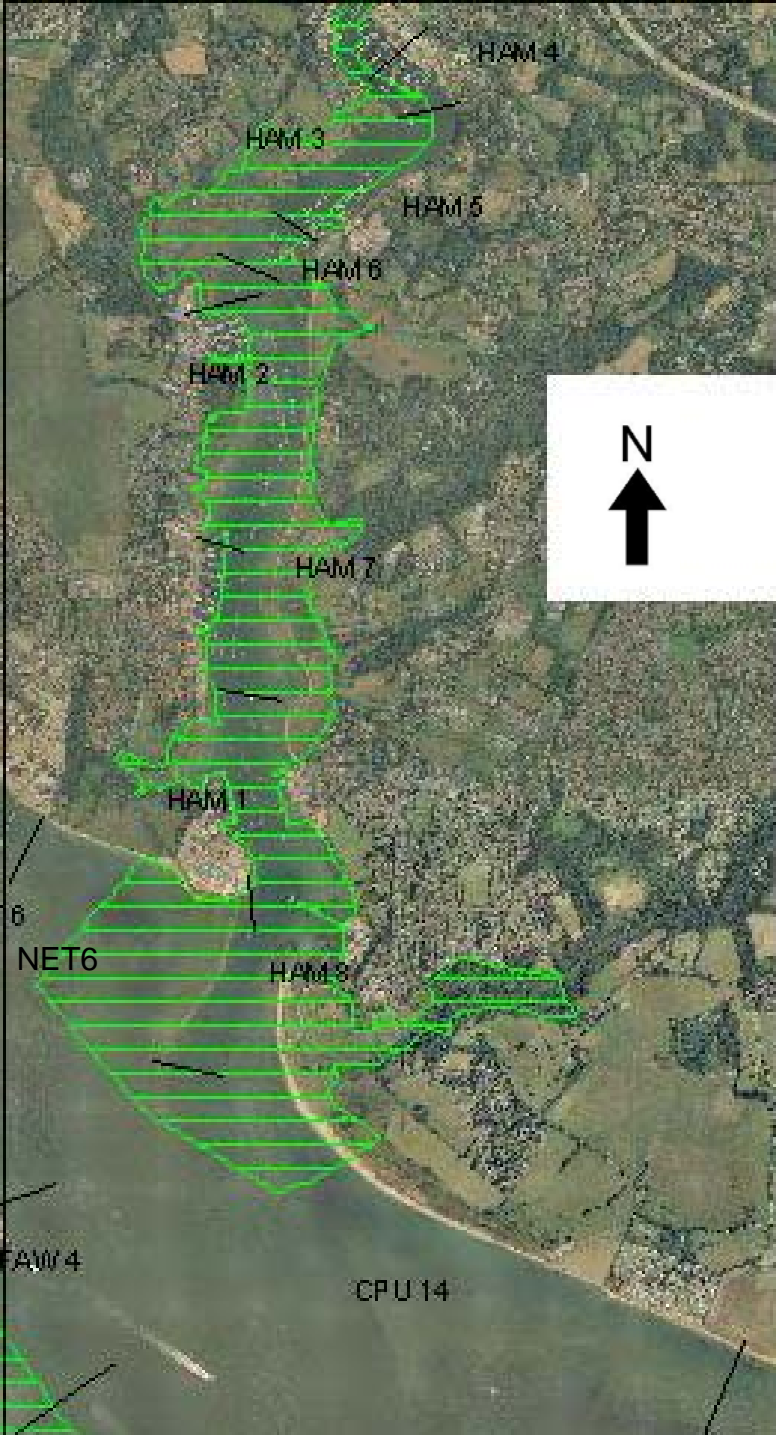


Special Area of Conservation (SAC)	
Special Protection Area (SPA)	
Ramsar Site	
Site of Special Scientific Interest (SSSI)	
Indicative Flood Zone	
Aerial Photography 2000. Copyright UK Perspectives	



North Solent Shoreline Management Plan

- NET6 Hamble Oil Terminal to Hamble Common Point
- HAM1 Hamble Common Point to Satchell Marshes
- HAM2 Satchell Marshes to Badnam Creek
- HAM3 Badnam Creek to Lands End Lane
- HAM4 Lands End Lane to Swanwick Shore Road
- HAM5 Swanwick Shore Road to Crableck Marina
- HAM6 Crableck Marina
- HAM7 Crableck Marina to Warsash North
- HAM8 Warsash North to Hook Park
- CPU14 Solent Breezes to Hook Lake



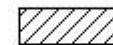
Special Area of Conservation (SAC)



Special Protection Area (SPA)



Ramsar Site



Site of Special Scientific Interest (SSSI)



Indicative Flood Zone

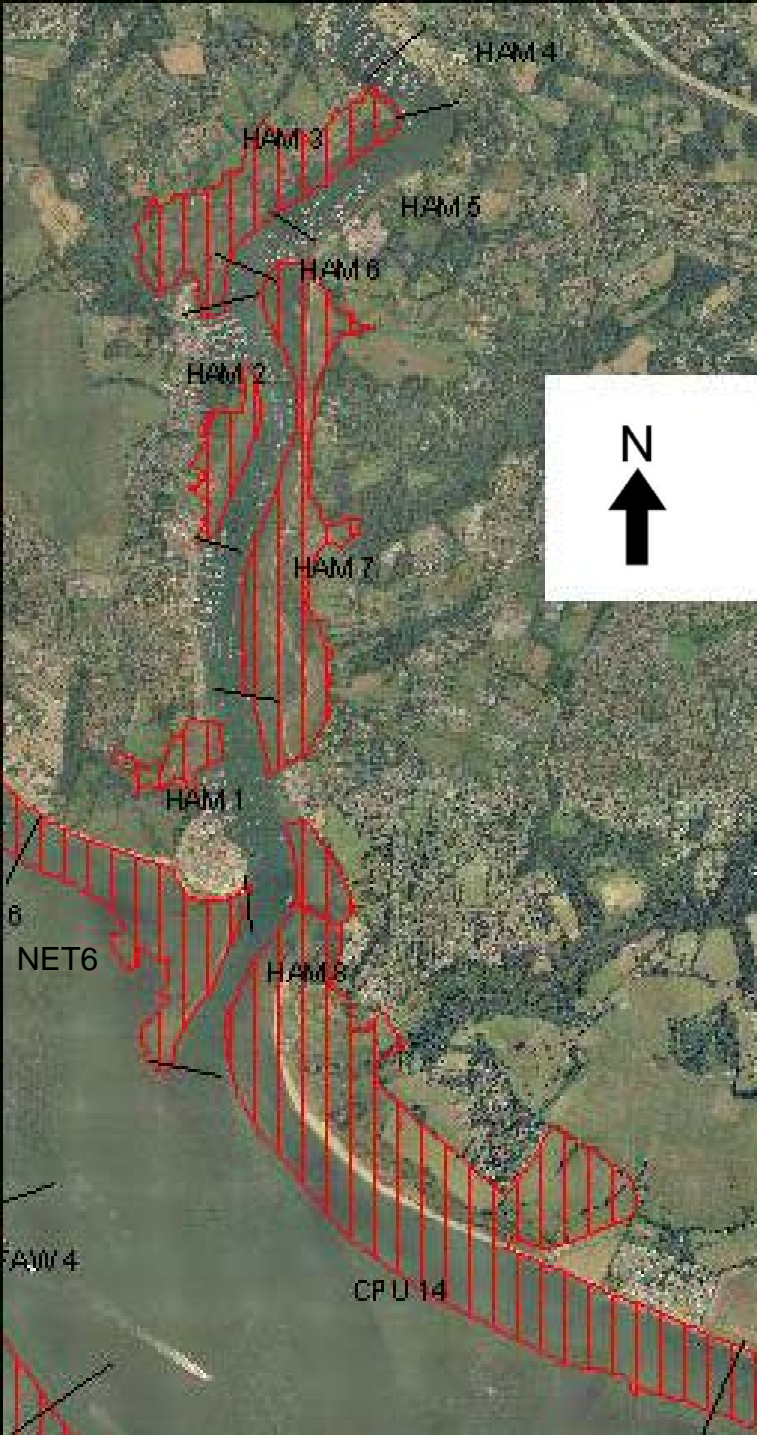


Aerial Photography 2000. Copyright UK Perspectives



North Solent Shoreline Management Plan

- NET6 Hamble Oil Terminal to Hamble Common Point
- HAM1 Hamble Common Point to Satchell Marshes
- HAM2 Satchell Marshes to Badnam Creek
- HAM3 Badnam Creek to Lands End Lane
- HAM4 Lands End Lane to Swanwick Shore Road
- HAM5 Swanwick Shore Road to Crableck Marina
- HAM6 Crableck Marina
- HAM7 Crableck Marina to Warsash North
- HAM8 Warsash North to Hook Park
- CPU14 Solent Breezes to Hook Lake



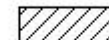
Special Area of Conservation (SAC)



Special Protection Area (SPA)



Ramsar Site



Site of Special Scientific Interest (SSSI)



Indicative Flood Zone

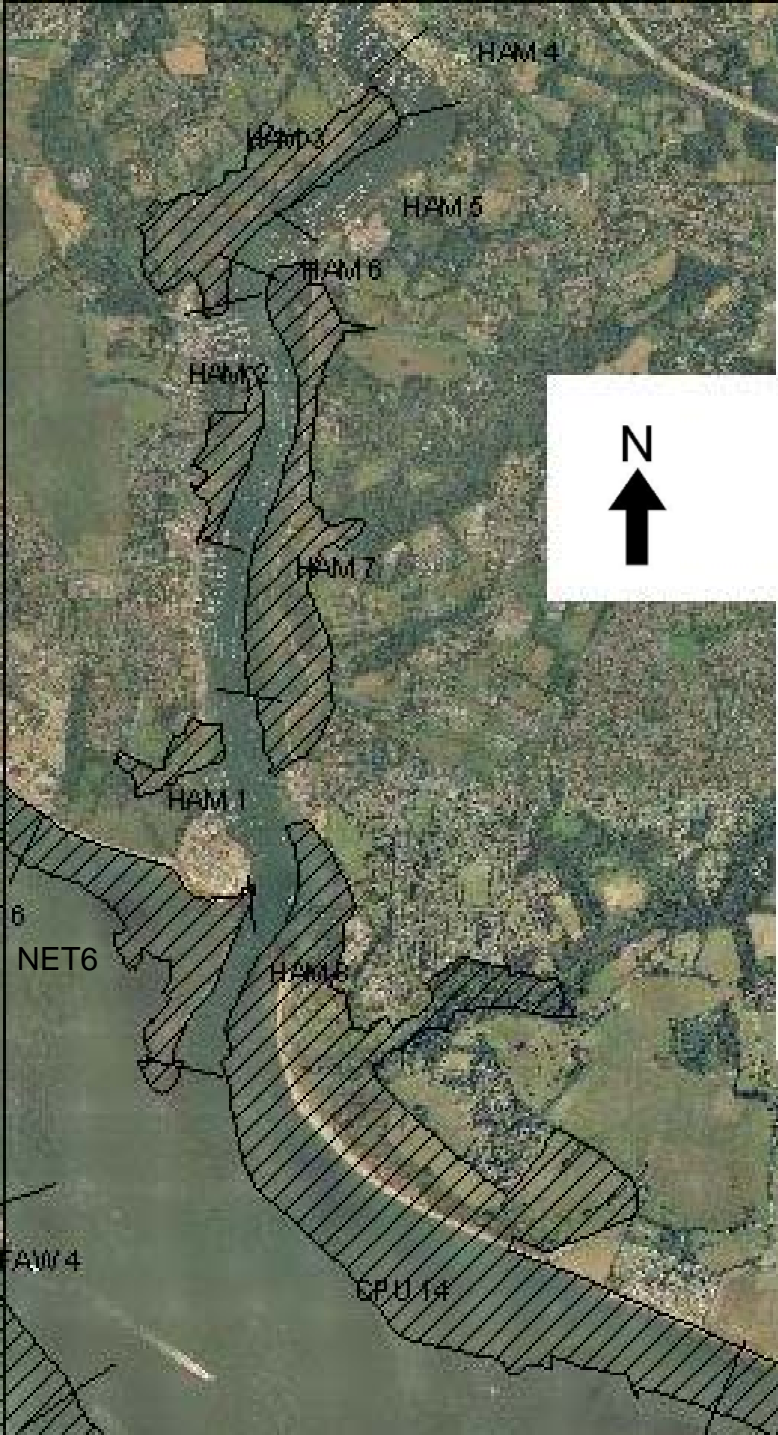


Aerial Photography 2000. Copyright UK Perspectives



North Solent Shoreline Management Plan

- NET6 Hamble Oil Terminal to Hamble Common Point
- HAM1 Hamble Common Point to Satchell Marshes
- HAM2 Satchell Marshes to Badnam Creek
- HAM3 Badnam Creek to Lands End Lane
- HAM4 Lands End Lane to Swanwick Shore Road
- HAM5 Swanwick Shore Road to Crableck Marina
- HAM6 Crableck Marina
- HAM7 Crableck Marina to Warsash North
- HAM8 Warsash North to Hook Park
- CPU14 Solent Breezes to Hook Lake



Special Area of Conservation (SAC)



Special Protection Area (SPA)



Ramsar Site



Site of Special Scientific Interest (SSSI)



Indicative Flood Zone

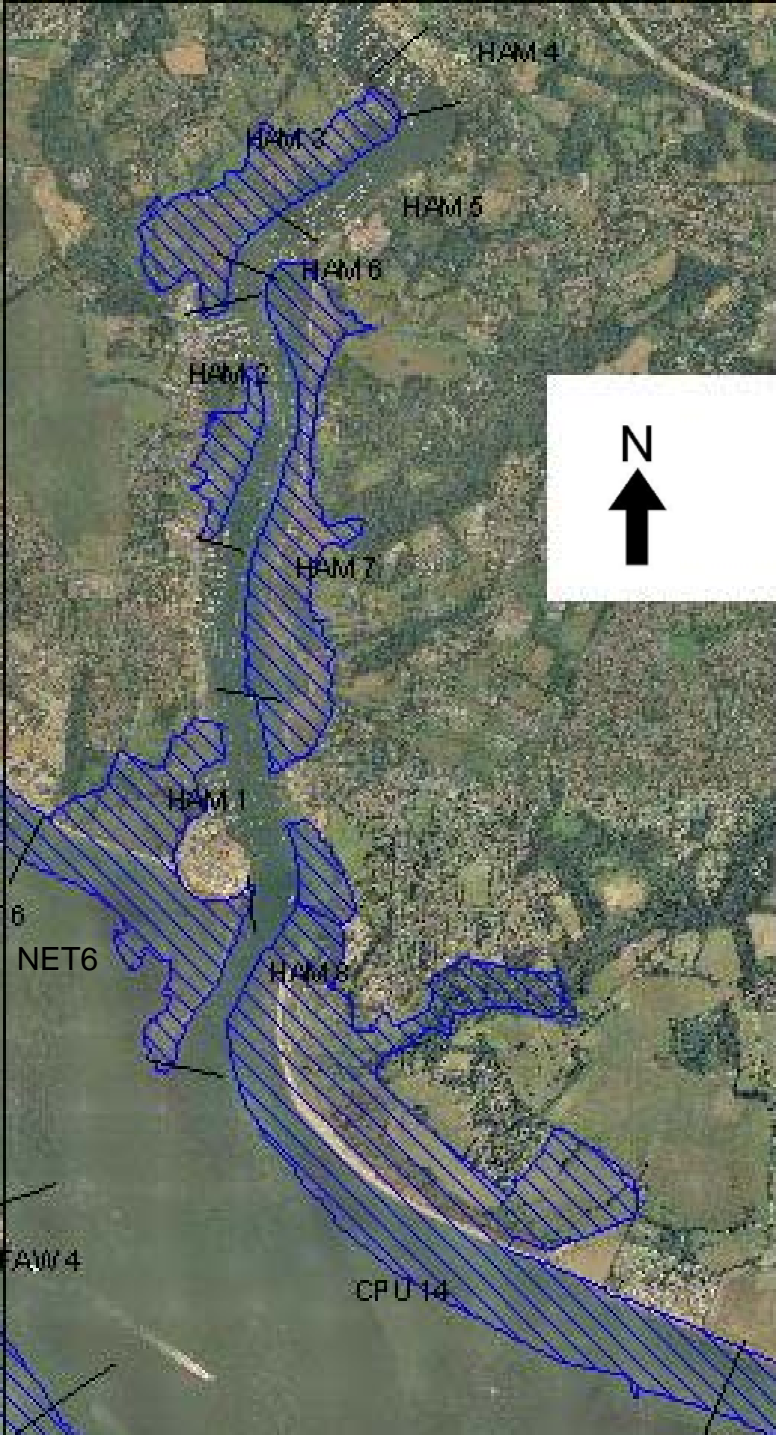


Aerial Photography 2000. Copyright UK Perspectives



North Solent Shoreline Management Plan

- NET6 Hamble Oil Terminal to Hamble Common Point
- HAM1 Hamble Common Point to Satchell Marshes
- HAM2 Satchell Marshes to Badnam Creek
- HAM3 Badnam Creek to Lands End Lane
- HAM4 Lands End Lane to Swanwick Shore Road
- HAM5 Swanwick Shore Road to Crableck Marina
- HAM6 Crableck Marina
- HAM7 Crableck Marina to Warsash North
- HAM8 Warsash North to Hook Park
- CPU14 Solent Breezes to Hook Lake



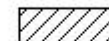
Special Area of Conservation (SAC)



Special Protection Area (SPA)



Ramsar Site



Site of Special Scientific Interest (SSSI)



Indicative Flood Zone

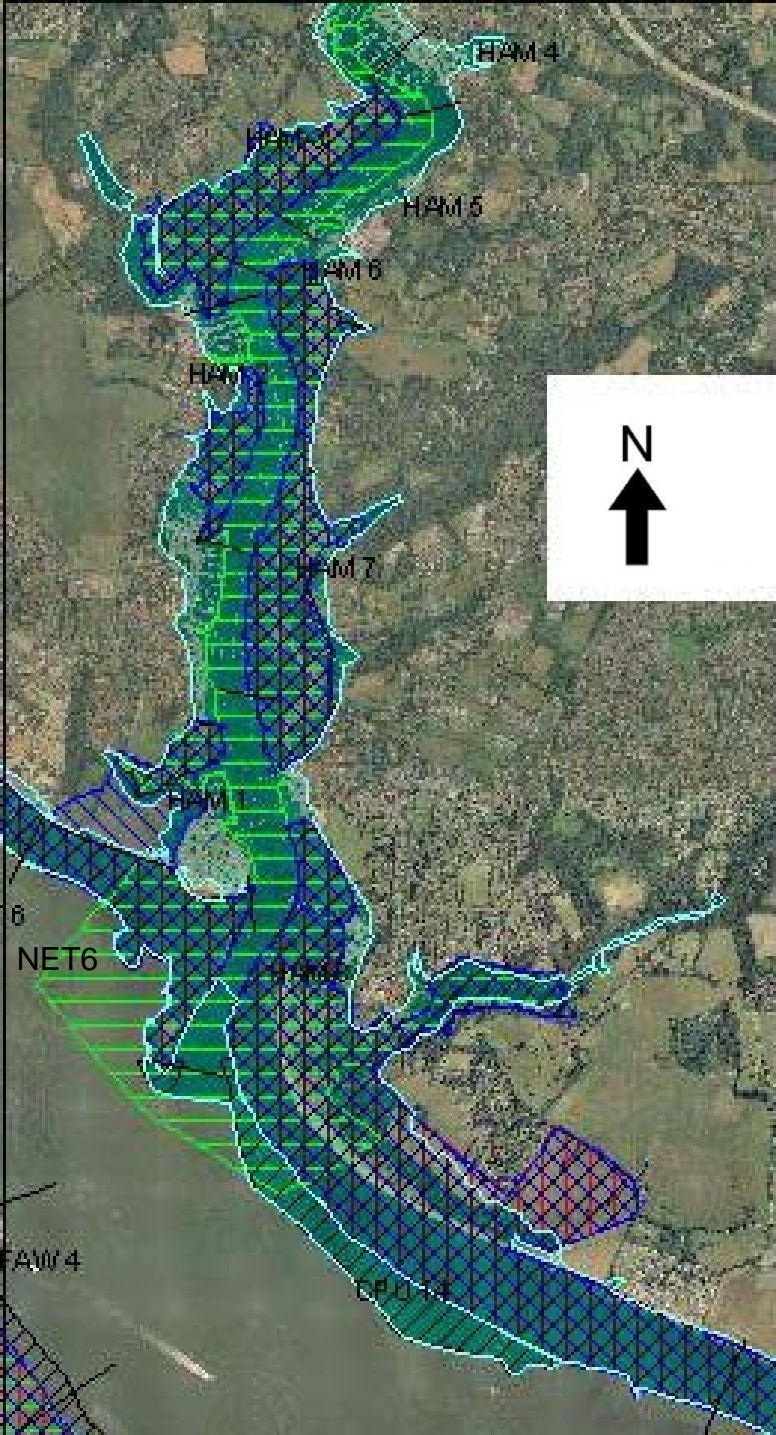


Aerial Photography 2000. Copyright UK Perspectives



North Solent Shoreline Management Plan

- NET6 Hamble Oil Terminal to Hamble Common Point
- HAM1 Hamble Common Point to Satchell Marshes
- HAM2 Satchell Marshes to Badnam Creek
- HAM3 Badnam Creek to Lands End Lane
- HAM4 Lands End Lane to Swanwick Shore Road
- HAM5 Swanwick Shore Road to Crableck Marina
- HAM6 Crableck Marina
- HAM7 Crableck Marina to Warsash North
- HAM8 Warsash North to Hook Park
- CPU14 Solent Breezes to Hook Lake



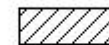
Special Area of Conservation (SAC)



Special Protection Area (SPA)



Ramsar Site



Site of Special Scientific Interest (SSSI)



Indicative Flood Zone



Aerial Photography 2000. Copyright UK Perspectives

