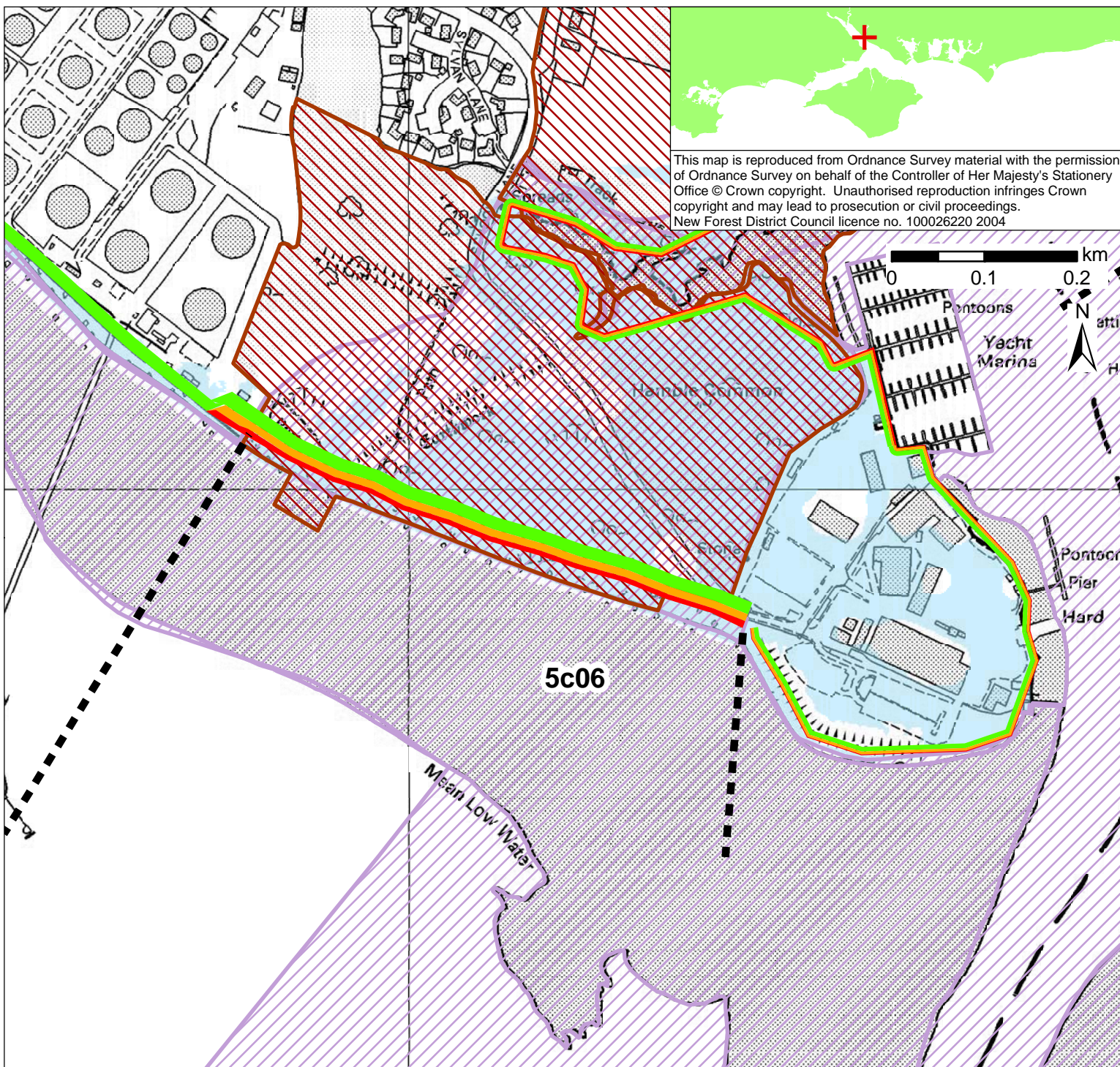


Policy Unit 5C06 Hamble Common Point to Hamble Oil Terminal		
Summary description of Policy Unit		
<p>The largely commercially developed frontage contains a mixture of industrial, marina and boat yard development and assets. There are also submarine cross-Southampton Water infrastructure and assets. The majority of the frontage is maintained by the Local Authority. The natural topography does restrict the extent of the tidal floodplain area. It is a relatively stable frontage with narrow shingle beach. Hamble Common is an important local recreational area. Inter-tidal habitats of International, European and national nature conservation importance, provide high tide roost sites and support the adjacent and nearby SPA/Ramsar sites. Heritage features include Scheduled Ancient Monument (Remains of St Andrew's castle) and maritime features. This frontage has been assessed in the draft River Itchen, Weston Shore, Netley and Hamble Coastal Defence Strategy.</p>		
Final policy options		SMP1 Ref NET6 Hold the Line
Epoch 1 From Present Day (up to 2025)	Epoch 2 Medium Term (2025 to 2055)	Epoch 3 Long Term (2055 to 2105)
No Active Intervention	No Active Intervention	No Active Intervention
Summary of rationale behind final policy options		
<p>The final policy options are taken from and consistent with the draft Itchen, Weston, Netley and River Hamble Coastal Defence Strategy.</p> <p>The policy intention indicates that no further works are required to the existing substantial flood defences on this frontage. The shoreline is relatively stable with low shoreline erosion and sediment transport rates and the lack of intervention will allow the coast to adapt naturally to changing coastal conditions. The commercial developments that include marina and boat yard facilities, which are located on the elevated hinterland, are not within the relatively constrained tidal floodplain.</p> <p>The outcomes of the further study on the long-term shoreline evolution of Hamble Point will necessitate a review of management options in the medium to long-term on this frontage due to potential changes in sediment transport and nearshore wave climate conditions.</p>		
Policy changes through Public Consultation		
<p>None. Public consultation on the draft Itchen, Weston, Netley and River Hamble Coastal Defence Strategy will confirm the final policy and management approach, which may require revisions to the final SMP policies. An Information Note for landowners, planners and developers on privately owned coastal defences and coastal planning issues has been produced.</p>		
Funding		
<p>No defence works are identified. As is currently the case, no public funding would be available for continued maintenance of defences by private owners.</p>		

Further Studies (identified in Action Plan)

Conclusion and approval of Itchen, Weston, Netley and River Hamble Coastal Defence Strategy



POLICY

From Present Day (up to 2025):	Medium-Term (2025 to 2055):	Long-Term (2055 to 2105):
No Active Intervention	No Active Intervention	No Active Intervention

- Indicative erosion zone up to 2025
- Indicative erosion zone up to 2055
- Indicative erosion zone up to 2105
- Policy Unit Boundary
- International / National Designations
- Important Heritage Sites
- 2115 Indicative Floodplain (1 in 200 year) provided from PUSH