

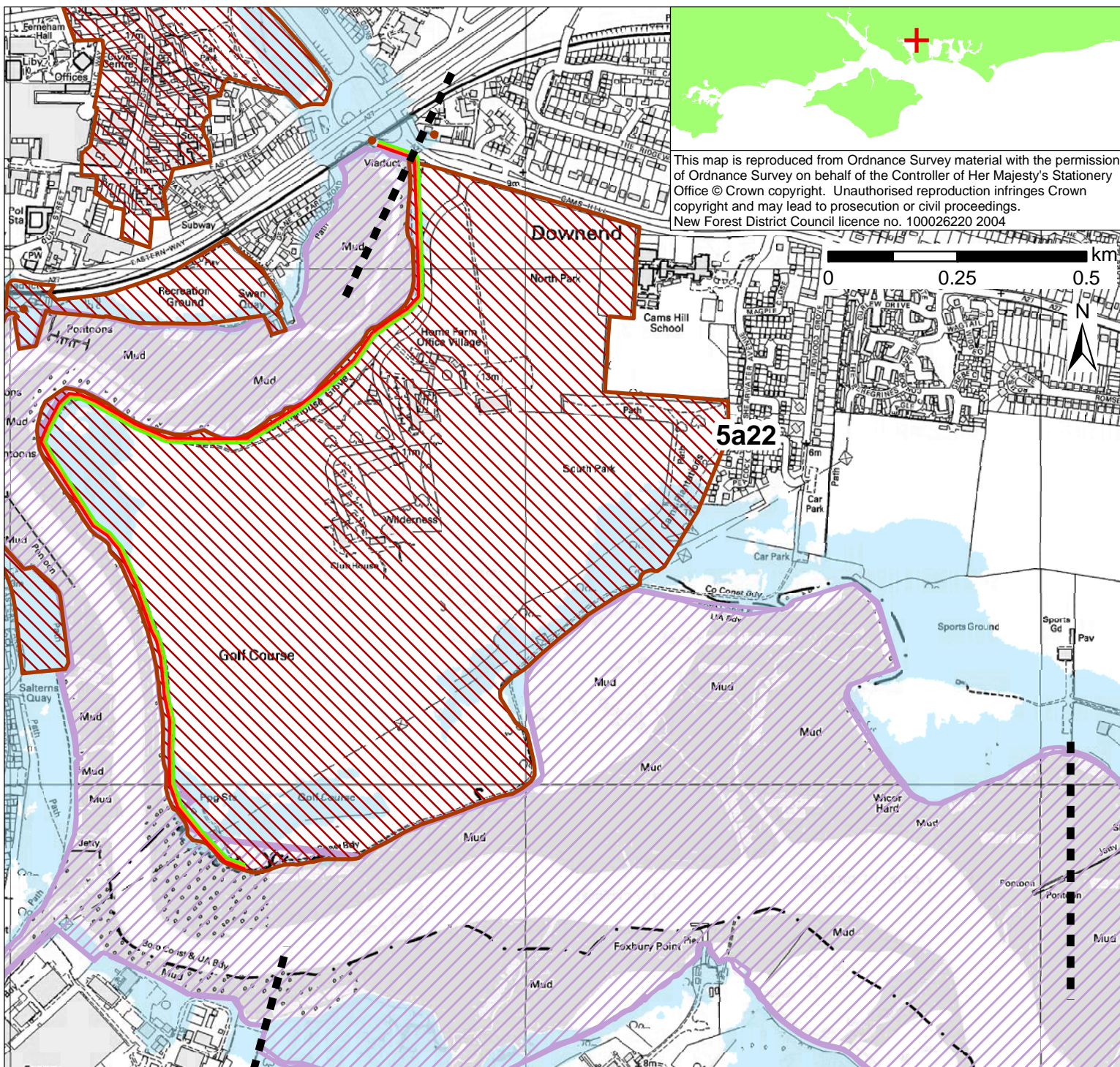
Policy Unit 5A22 Cador Drive to A27		
Summary description of Policy Unit		
<p>This largely undeveloped area is an important recreational area, and includes a golf course. Part of the shoreline and hinterland area is located on a former landfill site; the issue of contaminated land is being investigated. The existing defences are owned and maintained by the Local Authority. Analysis of shoreline erosion (see Appendix C5) indicates the rate and scale of coastal processes are less within the harbours than on the open coast. Inter-tidal habitats of International, European and national nature conservation importance support the adjacent and nearby SPA/Ramsar, and inland areas e.g. Cams Hall provide high tide roost sites for waders and waterfowl. Archaeological and heritage features have also been identified, along with Conservation Areas.</p>		
Final policy options		SMP1 Ref n/a
Epoch 1 From Present Day (up to 2025)	Epoch 2 Medium Term (2025 to 2055)	Epoch 3 Long Term (2055 to 2105)
Hold the Line	Hold the Line * (further detailed studies required for management of site)	Hold the Line * (further detailed studies required for management of site)
Summary of rationale behind final policy options		
<p>The flood defences for the frontage currently provide protection to an important amenity open space and recreational area for nearby populations and is largely undeveloped. Due to the level of uncertainty, the * in epochs 2 and 3 indicate that the future land use and flood defence requirements and alignment for this unit will be directly influenced and determined through further contaminated land investigations and studies on the former landfill site. The policy intent here therefore, is to maintain the existing flood defences, until such contaminated land investigations and studies are concluded. These will inform the proposed Portsmouth Harbour entrance to Portchester Coastal Defence Strategy.</p> <p>Due to the environmental designations within Portsmouth Harbour, continued maintenance of defence structures will result however, in the continued loss of European and national nature conservation designated habitats such as inter-tidal foreshore habitats, through coastal squeeze. These losses will need to be mitigated within the same designated area or compensated for elsewhere and delivered through the Regional Habitat Creation Programme. Opportunities for habitat mitigation and compensation have been detailed within the Appropriate Assessment of the final policies.</p>		
Policy changes through Public Consultation		
None		

Funding

It is unlikely that central government flood and coastal defence grant in aid funding could be secured, although alternative central government or other public funding sources may be available to Local Authority for contaminated land investigations and subsequent necessary works.

Further Studies (identified in Action Plan)

Portsmouth Harbour entrance to Portchester Flood and Coastal Erosion Risk Management Strategy
Contaminated Land investigations (for frontage between Portchester and Cams Hall)



POLICY

From Present Day (up to 2025):	Medium-Term (2025 to 2055):	Long-Term (2055 to 2105):
Hold the Line	Hold the Line	Hold the Line
	Requirement for more detailed study (for management of site to be determined following contaminated land investigations)	Requirement for more detailed study (for management of site to be determined following contaminated land investigations)

- Indicative erosion zone up to 2025
- Indicative erosion zone up to 2055
- Indicative erosion zone up to 2105
- Policy Unit Boundary
- International / National Designations
- Important Heritage Sites
- 2115 Indicative Floodplain (1 in 200 year) provided from PUSH