

Policy Unit 5A21 Farlington Marshes to Cador Drive**Summary description of Policy Unit**

This frontage is wholly developed, with an extensive tidal floodplain. The City of Portsmouth extends from Portsea Island onto the mainland, and includes critically important transport and communication networks of M275, M27, road and rail transport links. The area is dominated by residential properties (Paulsgrove, Portchester, Highbury, Cosham and Drayton), community facilities, commercial assets, including a Port Solent marina and waterside development, and Portchester Castle which is of national heritage importance. There is also a mixture of MOD owned and maintained facilities and land holdings. The former landfill site is being redeveloped. The majority of the existing defences are owned and maintained by the Local Authority with some lengths maintained by the MOD, the Highways Authority, English Heritage, private individuals and the Environment Agency. Analysis of shoreline erosion (see Appendix C5) indicates the rate and scale of coastal processes are less within the harbours than on the open coast. Inter-tidal habitats of International, European and national nature conservation importance support the adjacent and nearby SPA/Ramsar sites. Inland areas, e.g. waste disposal sites provide high tide roost sites for waders and waterfowl. Archaeological and heritage features include Scheduled Ancient Monuments, listed buildings and Conservation Areas; features have also been identified in the inter- and sub-tidal zones. The frontage between Cador Drive and Portchester Castle has not been assessed in the emerging Portchester to Emsworth Coastal Defence Strategy.

Final policy options

SMP1 Ref n/a

Epoch 1 From Present Day (up to 2025)	Epoch 2 Medium Term (2025 to 2055)	Epoch 3 Long Term (2055 to 2105)
Hold the Line	Hold the Line	Hold the Line

Summary of rationale behind final policy options

The final policy options are consistent with the emerging Portchester Castle to Emsworth Coastal Defence Strategy, which extends eastwards to Portchester. Maintenance of the current defence line will provide flood protection to strategically important transport and communication networks of the M275, M27, rail transport links and cross-harbour infrastructure. Also located within the extensive tidal floodplain are the residential conurbations of Paulsgrove, Portchester, Highbury, Cosham and Drayton, and commercial assets, including Port Solent marina and waterside development. The defences at the western end of this frontage (in the area of Cador Drive) currently provide a level of protection to a residential area developed on a former contaminated landfill site; however, these defences are deteriorating and reaching the end of their design life.

Portchester Castle, which is of national heritage importance, and amenity and recreation open spaces would also be protected by the continued maintenance of flood defences. Offshore within Portsmouth Harbour, the saltmarsh islands that function as roost sites will become increasingly vulnerable to rising sea levels.

Due to the environmental designations within Langstone and Portsmouth Harbours, holding the defence line will continue to contribute towards the loss of European and national nature conservation designated habitats such as inter-tidal foreshore habitats, through coastal squeeze. These losses will need to be mitigated within the same designated area or compensated for elsewhere and delivered through the Regional Habitat Creation Programme. Opportunities for habitat mitigation and compensation have been detailed within the Appropriate Assessment of the final policies.

Policy changes through Public Consultation

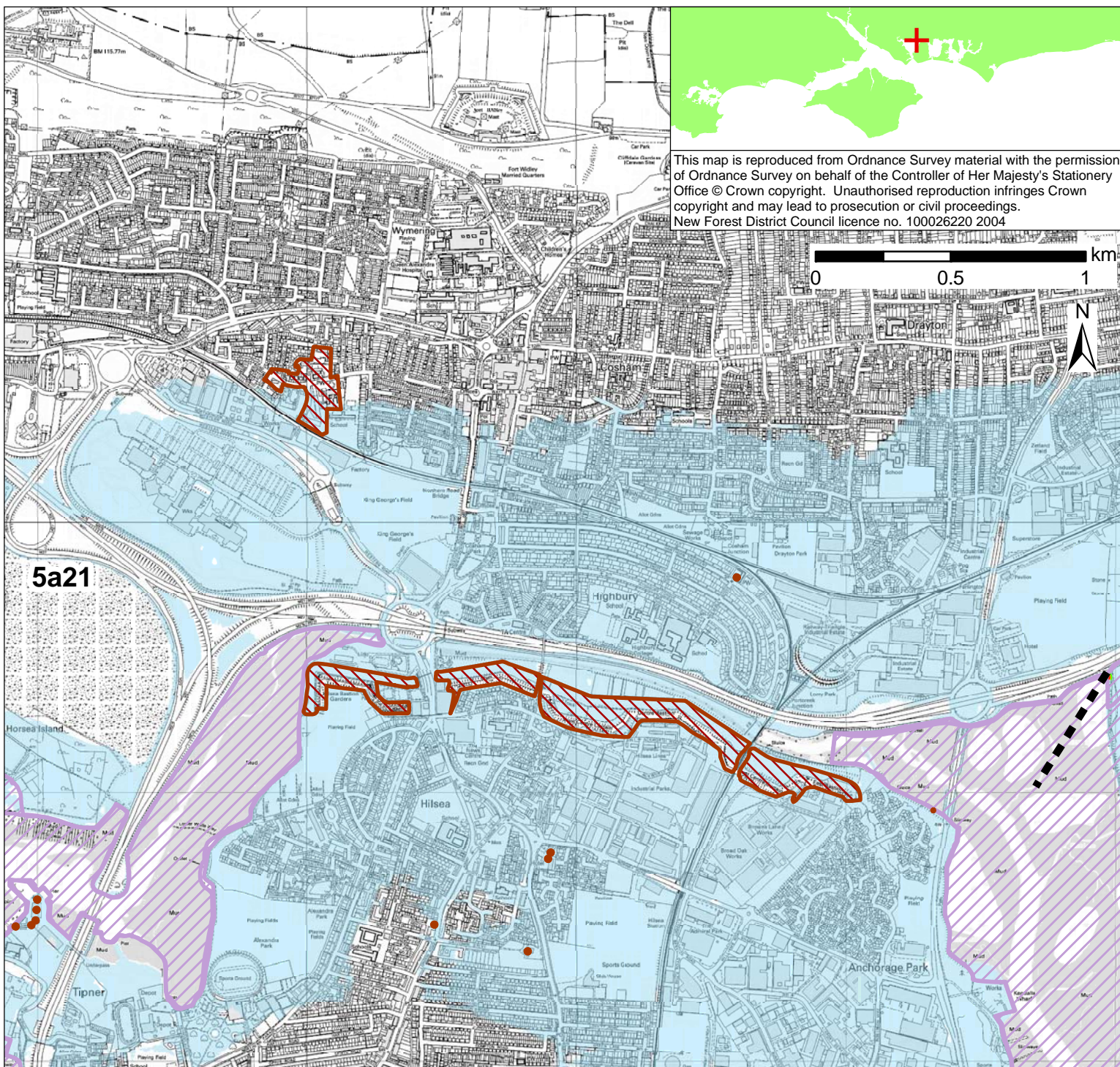
None

Funding

It is likely that central government funding could be secured for majority of identified works, as determined through the emerging Portchester to Emsworth Coastal Defence Strategy.

Further Studies (identified in Action Plan)

Conclusion and approval of Portchester to Emsworth Coastal Defence Strategy
Portsmouth Harbour entrance to Portchester Flood and Coastal Erosion Risk Management Strategy
Solent-wide network of high tide roost site study
Contaminated Land investigations (for frontage between Portchester and Cams Hall)

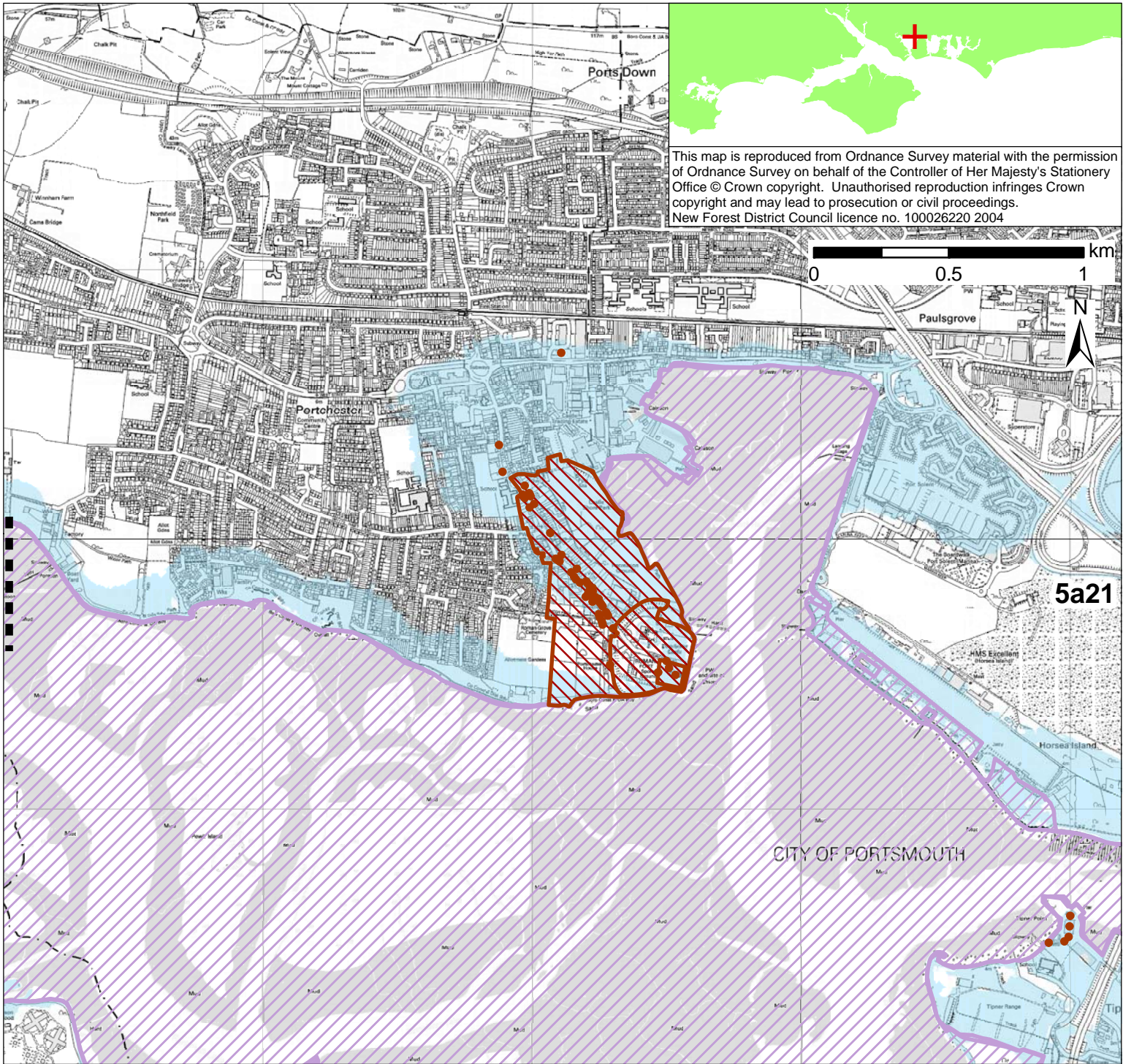


This map is reproduced from Ordnance Survey material with the permission of Ordnance Survey on behalf of the Controller of Her Majesty's Stationery Office © Crown copyright. Unauthorised reproduction infringes Crown copyright and may lead to prosecution or civil proceedings. New Forest District Council licence no. 100026220 2004

POLICY

From Present Day (up to 2025):	Medium-Term (2025 to 2055):	Long-Term (2055 to 2105):
Hold the Line	Hold the Line	Hold the Line

- Indicative erosion zone up to 2025
- Indicative erosion zone up to 2055
- Indicative erosion zone up to 2105
- Policy Unit Boundary
- International / National Designations
- Important Heritage Sites
- 2115 Indicative Floodplain (1 in 200 year) provided from PUSH



POLICY

From Present Day (up to 2025):	Medium-Term (2025 to 2055):	Long-Term (2055 to 2105):
Hold the Line	Hold the Line	Hold the Line

- Indicative erosion zone up to 2025
- Indicative erosion zone up to 2055
- Indicative erosion zone up to 2105
- Policy Unit Boundary
- International / National Designations
- Important Heritage Sites
- 2115 Indicative Floodplain (1 in 200 year) provided from PUSH