

Policy Unit 5A15 Wickor Point to Emsworth Yacht Haven**Summary description of Policy Unit**

This frontage is within Chichester Harbour AONB. The extensive tidal floodplain covers Ministry of Defence (MOD) facilities and assets and residential properties, transitional freshwater habitats, and terrestrial, inter-tidal and maritime heritage features. The single access transport link serving the MOD facilities on Thorney Island would also be affected by tidal flooding. Analysis of shoreline erosion (see Appendix C5) indicates the rate and scale of coastal processes are less within the harbours than on the open coast. There are inter-tidal habitats of International, European and national nature conservation importance and important roost sites for waders and waterfowl that support nearby and adjacent SPA/Ramsar sites. There is also a Local Nature Reserve. The existing defences are currently maintained by the Environment Agency.

Final policy options

SMP1 Ref n/a

Epoch 1 From Present Day (up to 2025)	Epoch 2 Medium Term (2025 to 2055)	Epoch 3 Long Term (2055 to 2105)
Hold the Line	Hold the Line	Hold the Line

Summary of rationale behind final policy options

The final policy options to continue to maintain the defence line reflect the MOD's intentions for future management of their defences around Thorney Island (Policy Units 5A12 to 15). The flood defences will continue to provide protection to an extensive area of MOD land and assets, agricultural land and residential properties within the Chichester Harbour Area of Outstanding Natural Beauty. Access and transport links to the MOD facilities and residential properties on Thorney Island will be maintained and allow MOD to protect the operational capabilities of their facilities for as long as they occupy the site. Offshore, the saltmarsh and sandflat islands will continue to provide a reducing level of natural flood protection and function as high tide roost sites

If ownership of Thorney Island changed in the future, there may be opportunities to realign defences for inter-tidal habitat creation and environmental enhancement. Therefore, the long-term flood and erosion risk management approach for the defences on Thorney Island will be directly linked to the MOD's operations and management of their facilities and their flood defence funding budgets to undertake necessary maintenance and improvement works

Due to the environmental designations within Chichester Harbour maintenance of defence structures will result however, in the continued erosion and loss of European and national nature conservation designated habitats such as inter-tidal foreshore habitats, through coastal squeeze. These losses will need to be mitigated within the same designated area or compensated for elsewhere and delivered through the Regional Habitat Creation Programme. Opportunities for habitat mitigation and compensation have been detailed within the Appropriate Assessment of the final policies.

Policy changes through Public Consultation

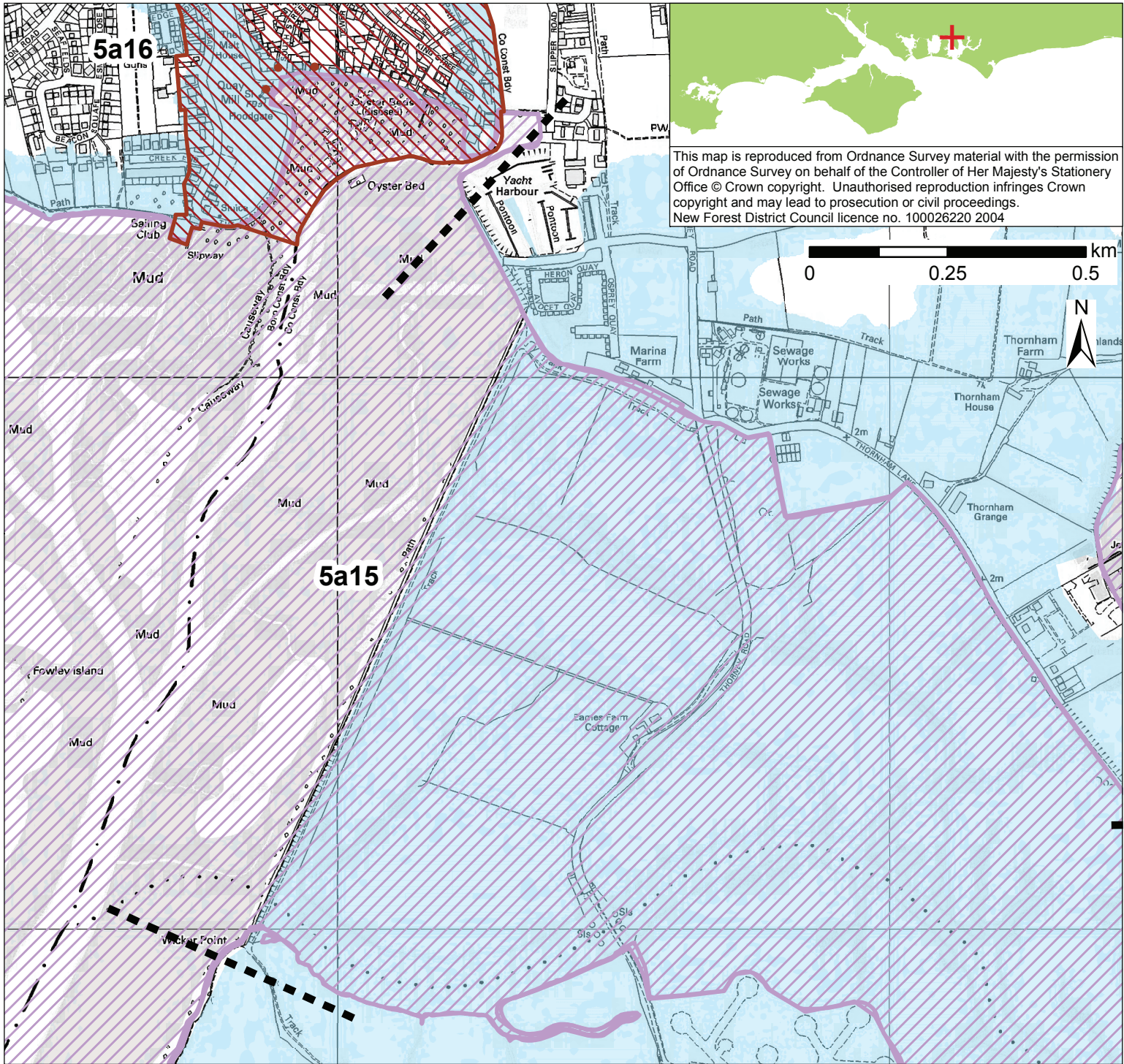
None

Funding

As long as the MOD continue to own and occupy this site, funding the identified maintenance and improvement works would need to be secured through the MOD rather than central government flood and coast defence grant in aid.

Further Studies (identified in Action Plan)
--

Emsworth to East Head Flood and Coastal Erosion Risk Management Strategy Solent-wide network of high tide roost site study



POLICY

From Present Day (up to 2025):	Medium-Term (2025 to 2055):	Long-Term (2055 to 2105):
Hold the Line	Hold the Line	Hold the Line

- Indicative erosion zone up to 2025
- Indicative erosion zone up to 2055
- Indicative erosion zone up to 2105
- Policy Unit Boundary
- International / National Designations
- Important Heritage Sites
- 2115 Indicative Floodplain (1 in 200 year) provided from PUSH