

<b><i>Policy Unit 5A07 Fishbourne to west of Cobnor Point</i></b>		
<b>Summary description of Policy Unit</b>		
<p>This frontage is within Chichester Harbour AONB and largely agricultural, grades 1, 2 and 3. The tidal floodplain is relatively limited due to sloping topography, although the historic residential areas of Bosham Hoe, Bosham and Chidham and individual residential properties are potentially at flood risk. There are several boatyards and sailing clubs within this sector of Chichester Harbour. The unit also contains Listed Buildings, Monuments and terrestrial, inter-tidal and maritime archaeological features, along with Conservation Areas. The local transport network and public open spaces are also potentially at flood risk. Analysis of shoreline erosion (see Appendix C5) indicates the rate and scale of coastal processes are less within the harbours than on the open coast. There are inter-tidal habitats of International, European and national nature conservation importance and important roost sites for waders and waterfowl that support nearby and adjacent SPA/Ramsar sites. The majority of the shoreline is privately owned and defences privately maintained.</p>		
<b>Final policy options</b>		SMP1 Ref n/a
<b>Epoch 1 From Present Day (up to 2025)</b>	<b>Epoch 2 Medium Term (2025 to 2055)</b>	<b>Epoch 3 Long Term (2055 to 2105)</b>
<b>Hold the Line No public funding available for private defences (Localised managed realignment at East Chidham. Location of secondary defences to be determined)</b>	<b>Hold the Line No public funding available for private defences</b>	<b>Hold the Line No public funding available for private defences</b>
<b>Summary of rationale behind final policy options</b>		
<p>The final policy options to continue to maintain the privately owned and maintained defence line reflect landowner's intentions for future management of their defences, thus removing the potential opportunity for localised intertidal habitat creation at Bosham. The localised MR option at East Chidham has support from the landowner and will provide mitigation inter-tidal habitat opportunities; if appropriate, the location of secondary or setback defences will be determined through further detailed assessments.</p> <p>Maintenance of the defences would provide protection of the historical residential communities of Bosham and Chidham, agricultural assets and landholdings, plus several boatyards and sailing clubs. This privately owned frontage is within Chichester Harbour Area of Outstanding Natural Beauty.</p> <p>The European and national nature conservation designations applicable to Chichester Harbour and the network of sites within the agricultural hinterland provide a supporting function as roosting or feeding areas to waders and waterfowl to these designated sites.</p> <p>Due to the environmental designations within Chichester Harbour maintenance of</p>		

defence structures will result however, in the continued loss of European and national nature conservation designated habitats such as inter-tidal foreshore habitats, through coastal squeeze. These losses will need to be mitigated within the same designated area or compensated for elsewhere and delivered through the Regional Habitat Creation Programme. Opportunities for habitat mitigation and compensation have been detailed within the Appropriate Assessment of the final policies.

#### **Policy changes through Public Consultation**

The policies proposed for consultation were HTL (localised MR at East Chidham and Bosham) / HTL / HTL. Following discussions and consultation with landowners the localised MR policy in epoch 3 at Bosham was amended to reflect landowner's objection to the MR policy option and their intentions for future defence management, thus removing the potential opportunity for localised intertidal habitat creation. Funding sources have been clarified.

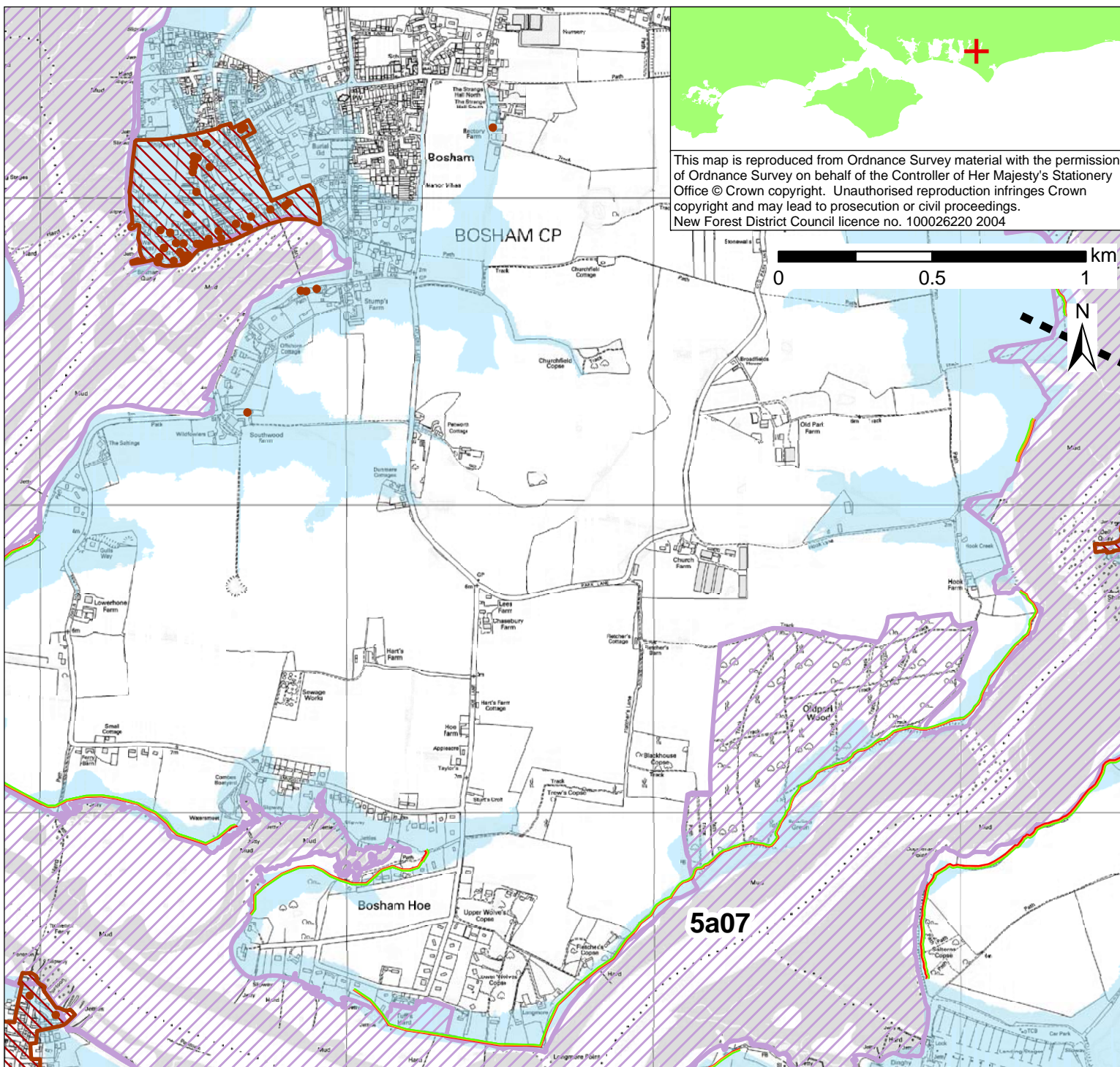
An Information Note for landowners, planners and developers on privately owned coastal defences and coastal planning issues has been produced.

#### **Funding**

Central government funding may be secured for works associated with localised managed realignment and habitat creation. As is currently the case, no public funding would be available for continued maintenance of defences by private owners.

#### **Further Studies (identified in Action Plan)**

Emsworth to East Head Flood and Coastal Erosion Risk Management Strategy  
Solent-wide network of high tide roost site study

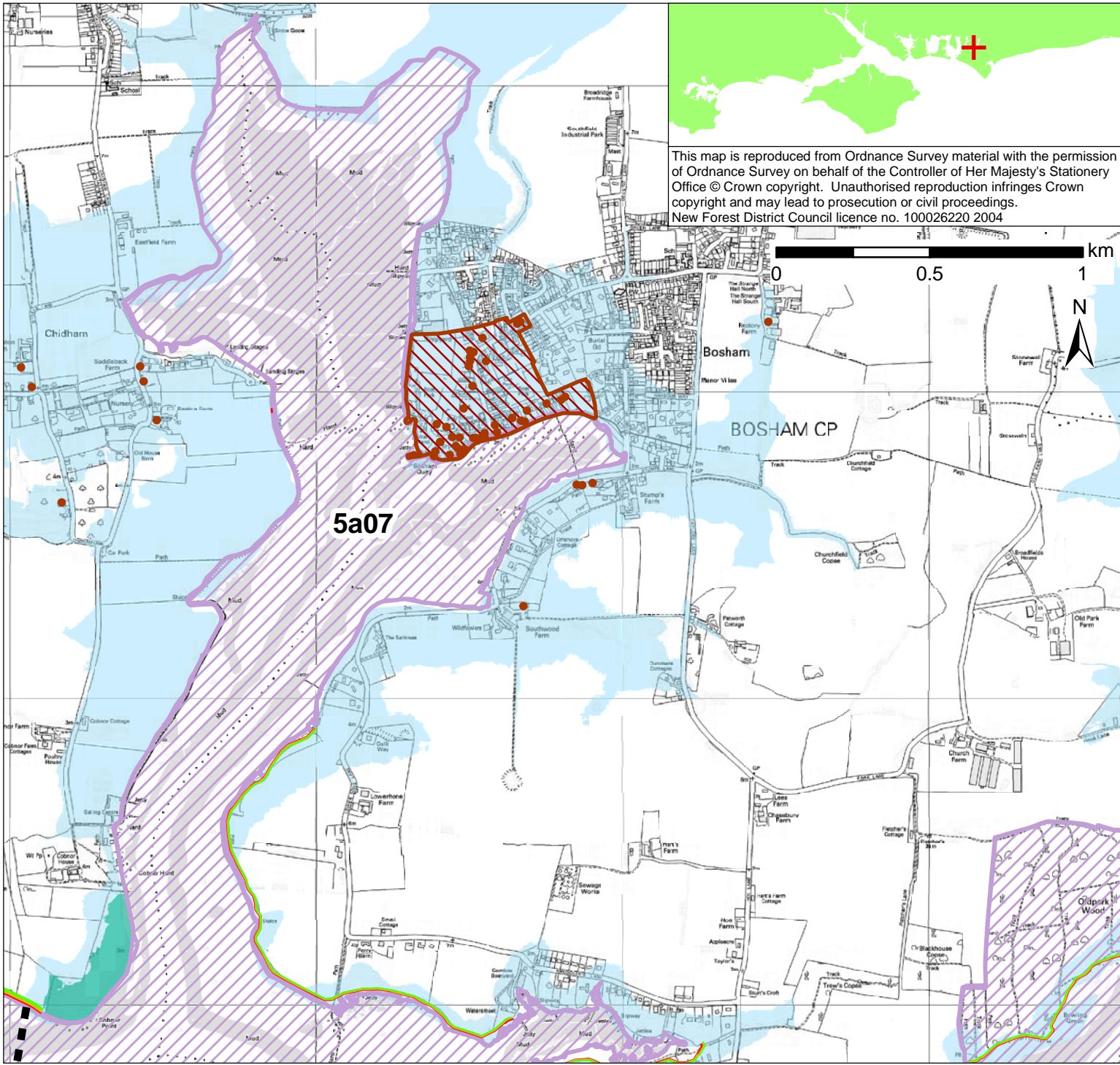


This map is reproduced from Ordnance Survey material with the permission of Ordnance Survey on behalf of the Controller of Her Majesty's Stationery Office © Crown copyright. Unauthorised reproduction infringes Crown copyright and may lead to prosecution or civil proceedings. New Forest District Council licence no. 100026220 2004

**POLICY**

From Present Day (up to 2025):	Medium-Term (2025 to 2055):	Long-Term (2055 to 2105):
<p>Hold the Line- No public funding available for private defences (Localised managed realignment at East Chidham. Location of secondary defences to be determined)</p>	<p>Hold the Line- No public funding available for private defences</p>	<p>Hold the Line- No public funding available for private defences</p>

- Indicative erosion zone up to 2025
- Indicative erosion zone up to 2055
- Indicative erosion zone up to 2105
- Policy Unit Boundary
- International / National Designations
- Important Heritage Sites
- 2108 Flood Risk Area (1 in 200 year) © Environment Agency



This map is reproduced from Ordnance Survey material with the permission of Ordnance Survey on behalf of the Controller of Her Majesty's Stationery Office © Crown copyright. Unauthorised reproduction infringes Crown copyright and may lead to prosecution or civil proceedings. New Forest District Council licence no. 100026220 2004

5a07

**POLICY**

From Present Day (up to 2025):	Medium-Term (2025 to 2055):	Long-Term (2055 to 2105):
<p>Hold the Line- No public funding available for private defences (Localised managed realignment at East Chidham. Location of secondary defences to be determined)</p>	<p>Hold the Line- No public funding available for private defences</p>	<p>Hold the Line- No public funding available for private defences</p>

- Indicative erosion zone up to 2025
- Indicative erosion zone up to 2055
- Indicative erosion zone up to 2105
- Policy Unit Boundary
- International / National Designations
- Important Heritage Sites
- 2108 Flood Risk Area (1 in 200 year) © Environment Agency
- Potential Area Considered for Managed Realignment