

Policy Unit 5A05 Ella Nore Lane to Fishbourne		
Summary description of Policy Unit		
<p>This frontage is within Chichester Harbour AONB and largely agricultural land, grades 1, 2 and 3. Although the tidal floodplain is relatively limited due to topography there are historic residential centres such as Itchenor and Fishbourne, individual residential properties, commercial properties (e.g. Birdham, West Itchenor) potentially at flood risk. There are several major marinas, boatyards and sailing clubs within this sector of Chichester Harbour. The unit also contains Listed Buildings, Monuments and terrestrial, inter-tidal and maritime archaeological features (e.g. Fishbourne, Apuldram), along with Conservation Areas. The strategically important sewage treatment plant infrastructure, transport network and public open spaces are also potentially at tidal flood risk. Analysis of shoreline erosion (see Appendix C5) indicates the rate and scale of coastal processes are less within the harbours than on the open coast. There are inter-tidal and transitional freshwater habitats of International, European and national nature conservation importance and important roost sites for waders and waterfowl that support nearby and adjacent SPA/Ramsar sites. The majority of the shoreline is privately owned and defences privately maintained; there are publically maintained defences at Itchenor, Apuldram and Fishbourne.</p>		
Final policy options		SMP1 Ref n/a
Epoch 1 From Present Day (up to 2025)	Epoch 2 Medium Term (2025 to 2055)	Epoch 3 Long Term (2055 to 2105)
Hold the Line No public funding available for private defences	Hold the Line No public funding available for private defences	Hold the Line No public funding available for private defences (Localised managed realignment at Horse Pond. Location of secondary defences to be determined)
Summary of rationale behind final policy options		
<p>The final policy options to continue to maintain the privately owned and maintained defence line reflect landowner's intentions for future management of their defences, thus removing the potential opportunity for localised intertidal habitat creation at Ella Nore.</p> <p>A key consideration that has assisted in the determination of the final policies to continue to maintain the current defence line is that the majority of the flood defences are privately owned and maintained. These defences afford a level of flood protection to historic residential and heritage rich centres, amenity open space, commercial, industrial, recreational and wider community assets that are located within the agricultural hinterland from the significant coastal flood and erosion risk area within this area of Chichester Harbour. Maintenance of flood defences will also benefit the network of sites within the agricultural hinterland that</p>		

provide a supporting function as roosting or feeding areas to waders and waterfowl to these designated sites. The localised MR option at Horse Pond has support from the landowner and will provide mitigation inter-tidal habitat opportunities.

Due to the environmental designations within Chichester Harbour, maintenance of defence structures will result in the continued loss of European and national nature conservation designated habitats such as inter-tidal foreshore habitats, through coastal squeeze. These losses will need to be mitigated within the same designated area or compensated for elsewhere. Opportunities for inter-tidal habitat mitigation and compensation have been detailed within the Appropriate Assessment of the final policies. The localised MR at Horse Pond will also require compensation coastal grazing marsh to be created in advance of realignment of defences, which will need to be delivered through the Regional Habitat Creation Programme.

Policy changes through Public Consultation

The policies proposed for consultation were HTL / HTL (localised MR at Ella Nore) / HTL (localised MR at Horse Pond). Following discussions and consultation with landowners the localised MR at Ella Nore in epoch 2 was amended to reflect landowner's objection to the MR policy and their intentions for future defence management for continued maintenance of defences thus removing the potential opportunity for localised intertidal habitat creation. Funding sources have been clarified

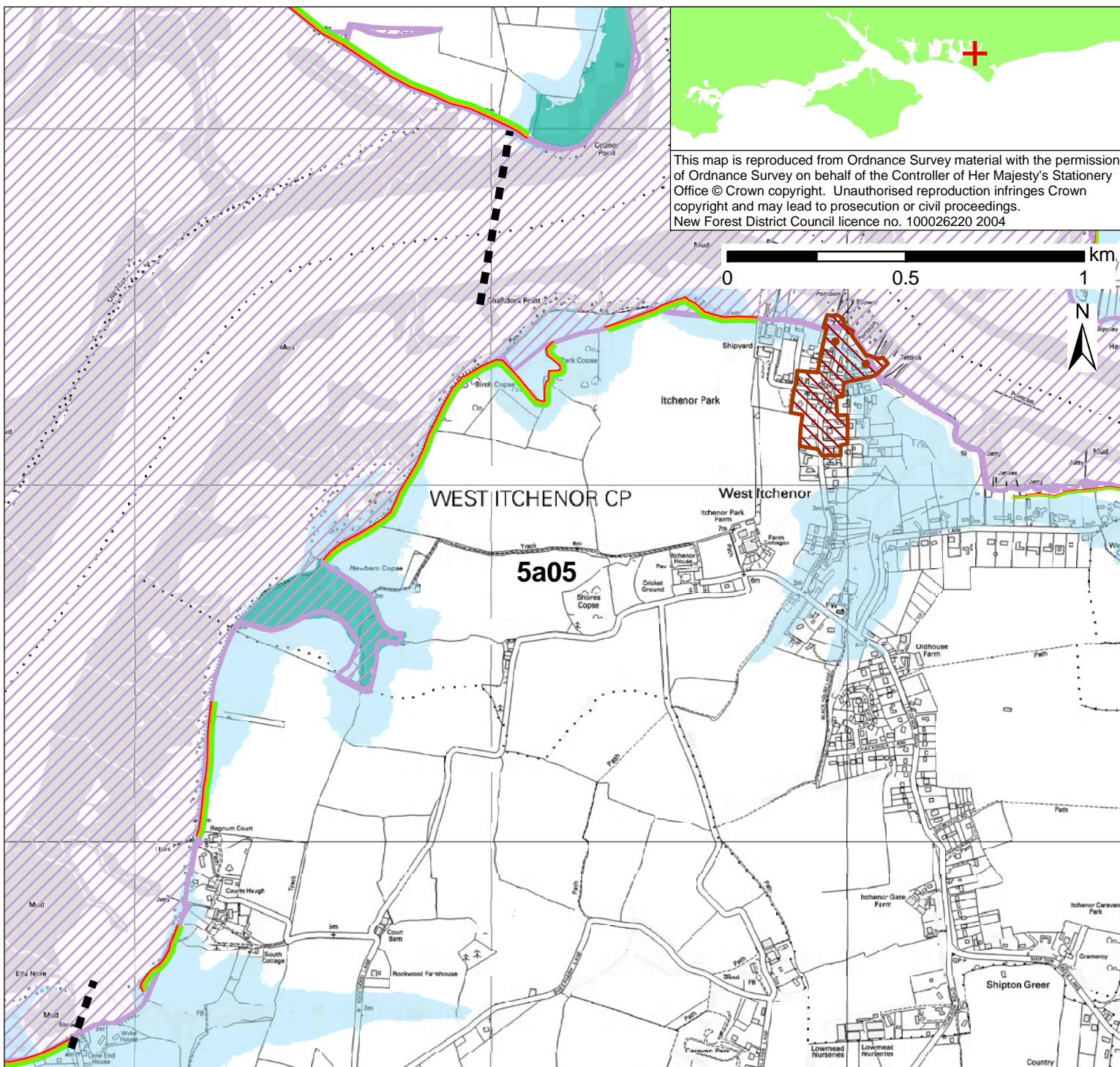
An Information Note for landowners, planners and developers on privately owned coastal defences and coastal planning issues has been produced.

Funding

It is uncertain whether central government funding could be secured for identified works for the frontages at West Itchenor, Birdham or Fishbourne. Central government funding may be secured for works associated with localised managed realignment and habitat creation. As is currently the case, no public funding would be available for continued maintenance of defences by private owners.

Further Studies (identified in Action Plan)

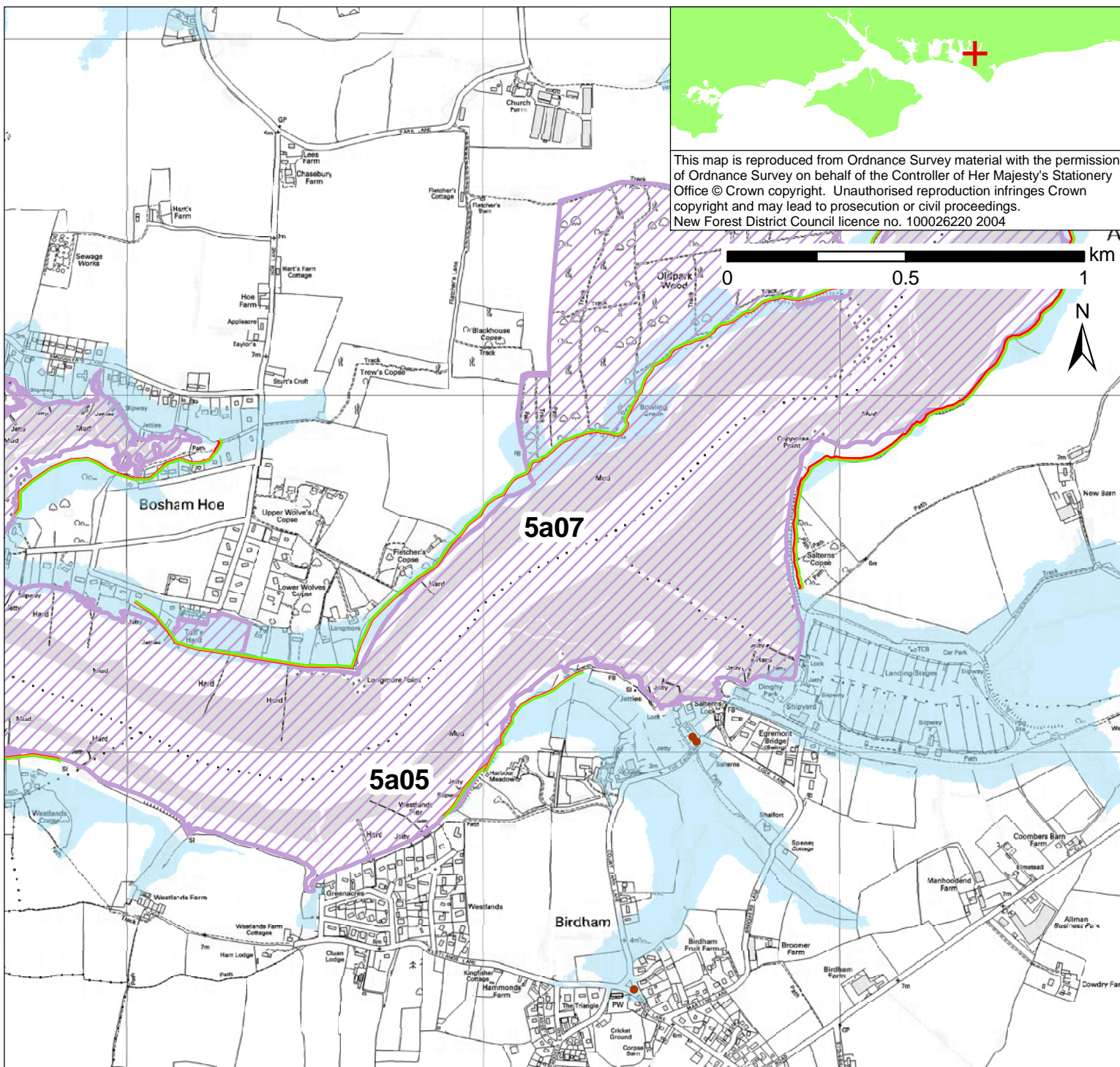
Emsworth to East Head Flood and Coastal Erosion Risk Management Strategy
Solent-wide network of high tide roost site study



This map is reproduced from Ordnance Survey material with the permission of Ordnance Survey on behalf of the Controller of Her Majesty's Stationery Office © Crown copyright. Unauthorised reproduction infringes Crown copyright and may lead to prosecution or civil proceedings. New Forest District Council licence no. 100026220 2004

POLICY	From Present Day (up to 2025):	Medium-Term (2025 to 2055):	Long-Term (2055 to 2105):
	Hold the Line- No public funding available for private defences	Hold the Line- No public funding available for private defences	Hold the Line- No public funding available for private defences (Localised managed realignment at Horse Pond. Location of secondary defences to be determined)

- Indicative erosion zone up to 2025
- Indicative erosion zone up to 2055
- Indicative erosion zone up to 2105
- Policy Unit Boundary
- International / National Designations
- Important Heritage Sites
- 2108 Flood Risk Area (1 in 200 year) © Environment Agency
- Potential Area Considered for Managed Realignment



POLICY

From Present Day (up to 2025):

Medium-Term (2025 to 2055):

Long-Term (2055 to 2105):

Hold the Line-
No public funding available for private defences

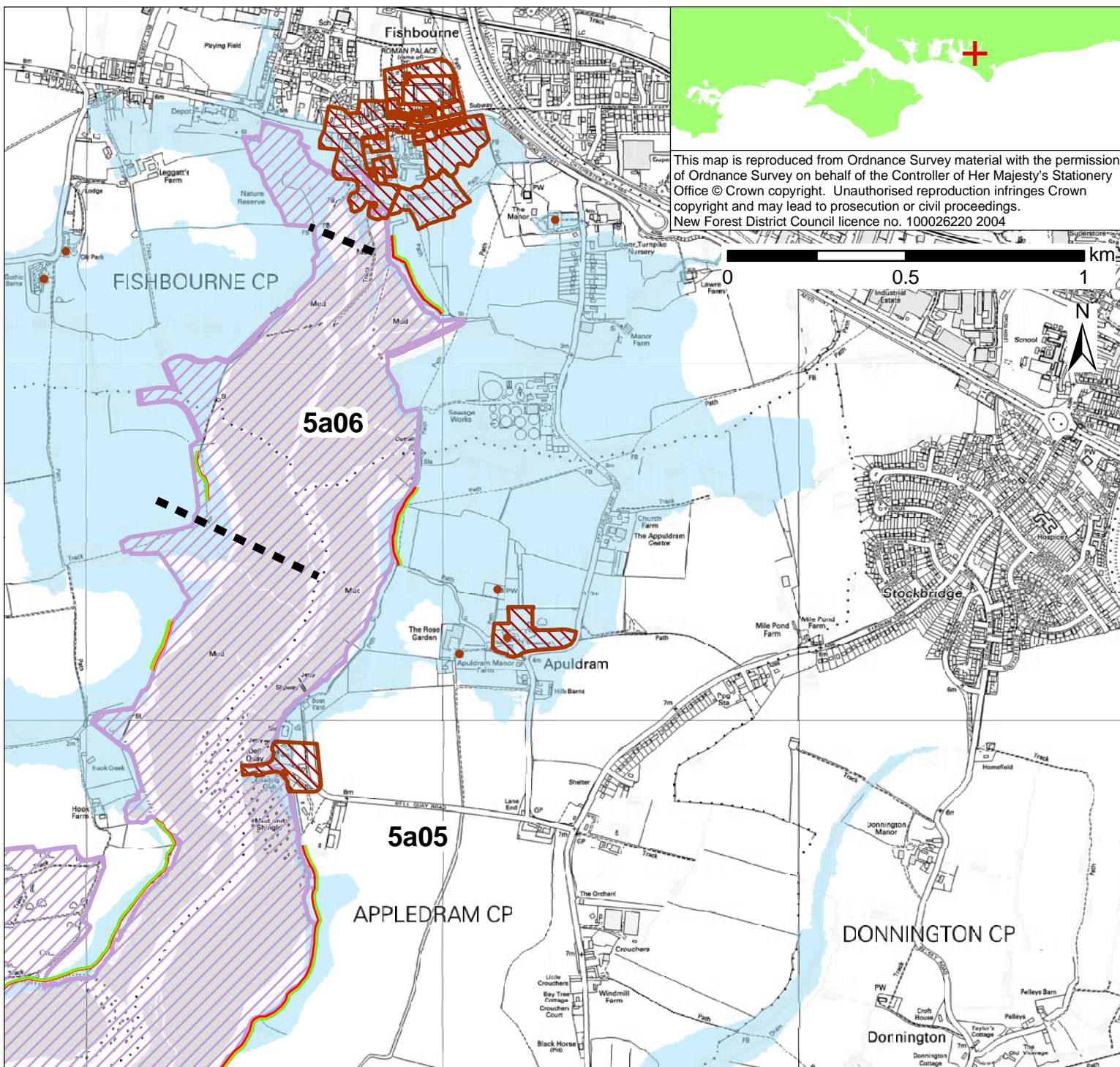
Hold the Line-
No public funding available for private defences

Hold the Line-
No public funding available for private defences
(Localised managed realignment at Horse Pond. Location of secondary defences to be determined)

- Indicative erosion zone up to 2025
- Indicative erosion zone up to 2055
- Indicative erosion zone up to 2105

- International / National Designations
- Important Heritage Sites
- 2108 Flood Risk Area (1 in 200 year) © Environment Agency

■ ■ ■ Policy Unit Boundary



POLICY

From Present Day (up to 2025):

Hold the Line-
No public funding available for private defences

Medium-Term (2025 to 2055):

Hold the Line-
No public funding available for private defences

Long-Term (2055 to 2105):

Hold the Line-
No public funding available for private defences
(Localised managed realignment at Horse Pond. Location of secondary defences to be determined)

Indicative erosion zone up to 2025

Indicative erosion zone up to 2055

Indicative erosion zone up to 2105

Policy Unit Boundary

International / National Designations

Important Heritage Sites

2108 Flood Risk Area (1 in 200 year) © Environment Agency