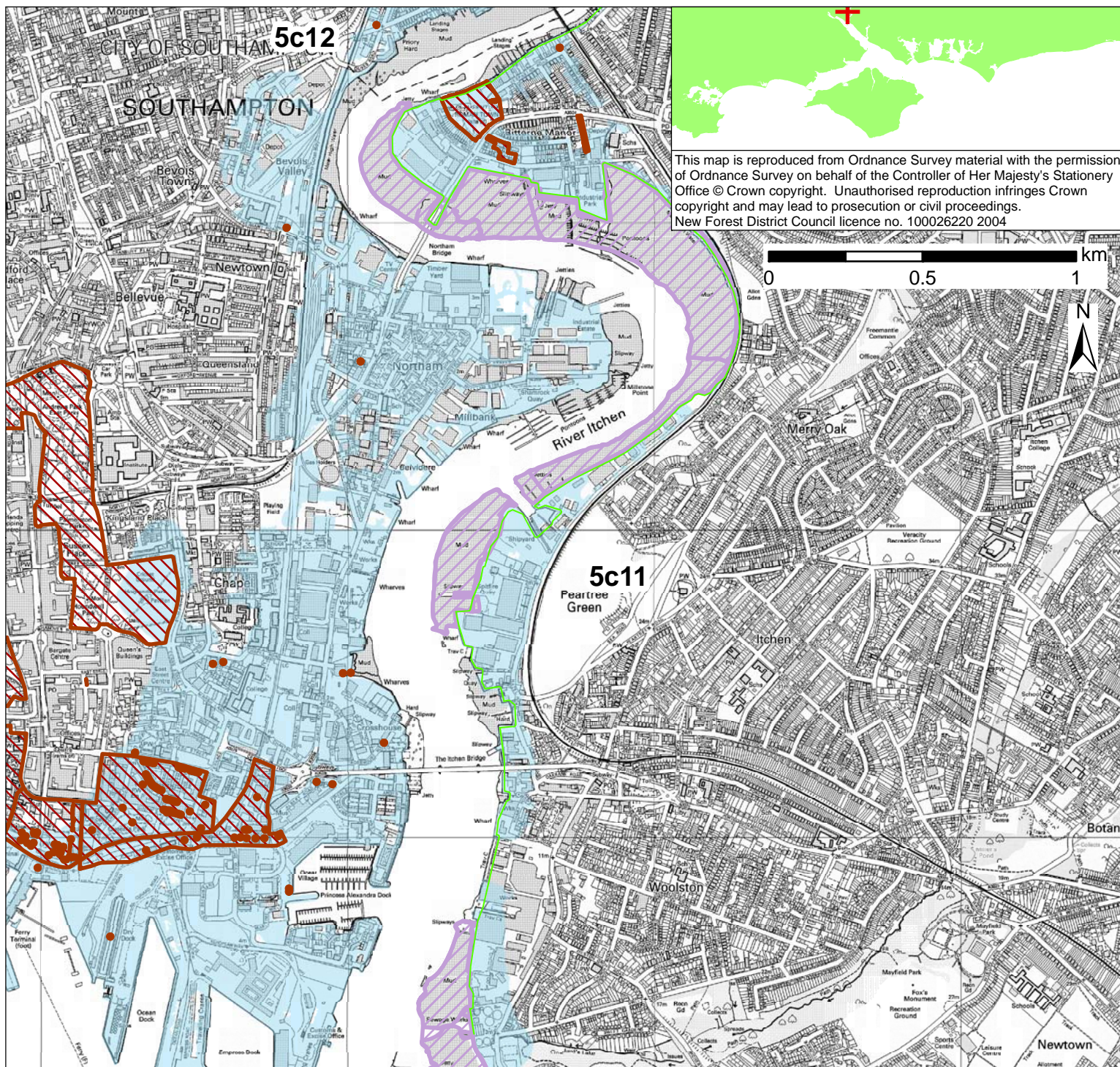


**POLICY**

From Present Day (up to 2025):	Medium-Term (2025 to 2055):	Long-Term (2055 to 2105):
Hold the Line	Hold the Line	Hold the Line

- Indicative erosion zone up to 2025
- Indicative erosion zone up to 2055
- Indicative erosion zone up to 2105
- Policy Unit Boundary
- International / National Designations
- Important Heritage Sites
- 2115 Indicative Floodplain (1 in 200 year) provided from PUSH





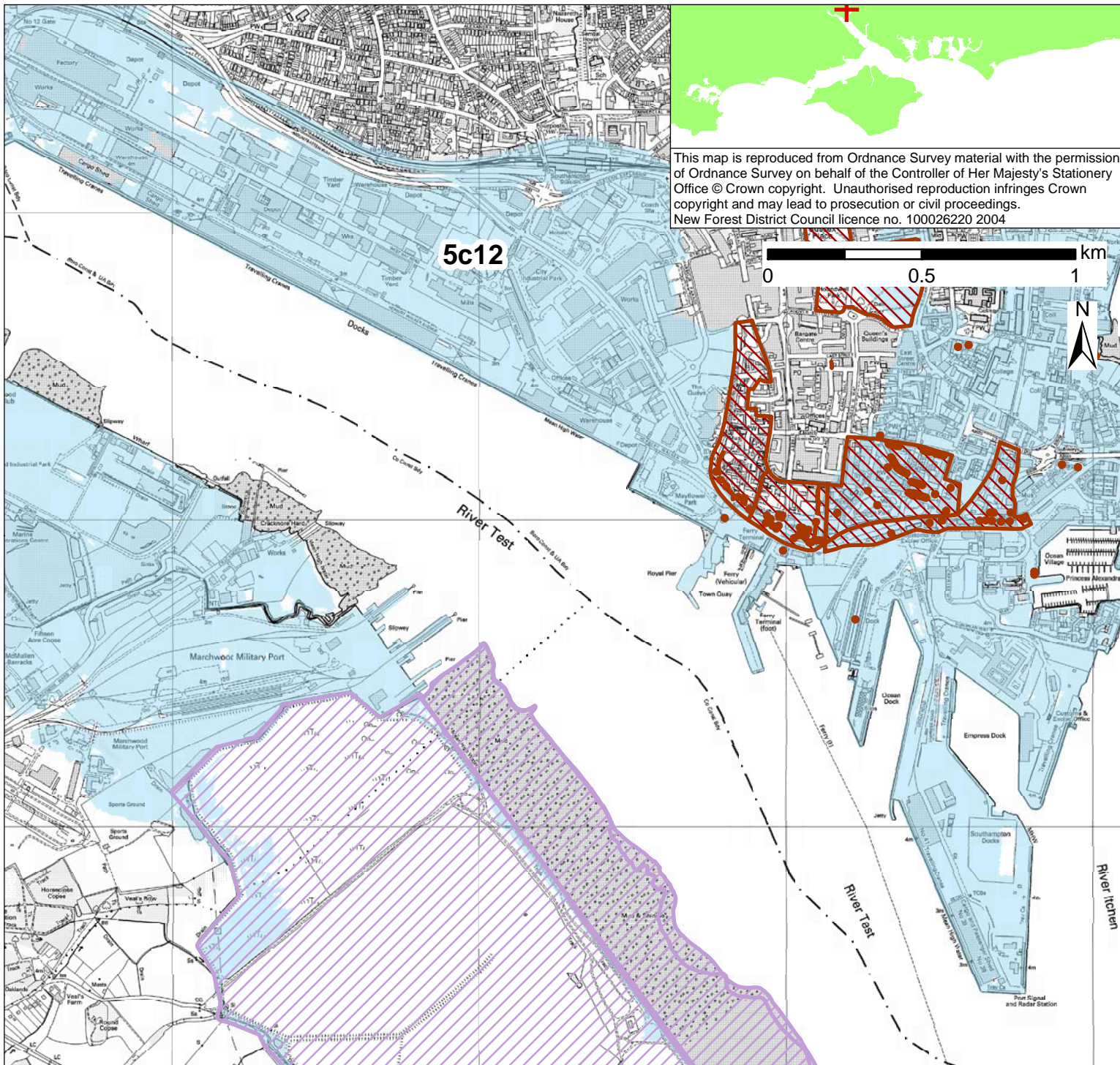
This map is reproduced from Ordnance Survey material with the permission of Ordnance Survey on behalf of the Controller of Her Majesty's Stationery Office © Crown copyright. Unauthorised reproduction infringes Crown copyright and may lead to prosecution or civil proceedings. New Forest District Council licence no. 100026220 2004

**POLICY**

From Present Day (up to 2025):	Medium-Term (2025 to 2055):	Long-Term (2055 to 2105):
Hold the Line	Hold the Line	Hold the Line

- Indicative erosion zone up to 2025
- Indicative erosion zone up to 2055
- Indicative erosion zone up to 2105
- Policy Unit Boundary
- International / National Designations
- Important Heritage Sites
- 2115 Indicative Floodplain (1 in 200 year) provided from PUSH





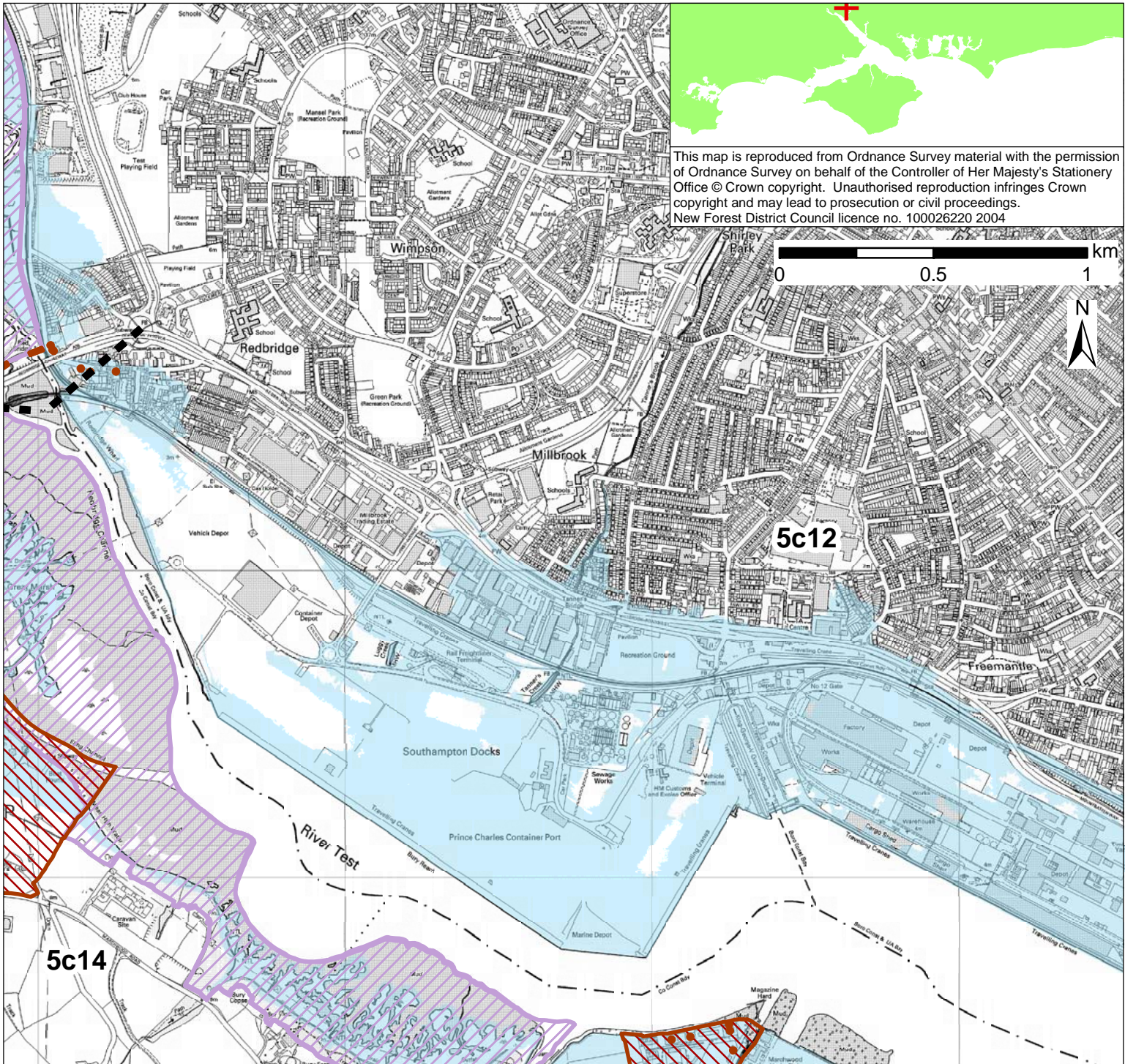
This map is reproduced from Ordnance Survey material with the permission of Ordnance Survey on behalf of the Controller of Her Majesty's Stationery Office © Crown copyright. Unauthorised reproduction infringes Crown copyright and may lead to prosecution or civil proceedings. New Forest District Council licence no. 100026220 2004

**POLICY**

From Present Day (up to 2025):	Medium-Term (2025 to 2055):	Long-Term (2055 to 2105):
Hold the Line	Hold the Line	Hold the Line

- Indicative erosion zone up to 2025
- Indicative erosion zone up to 2055
- Indicative erosion zone up to 2105
- Policy Unit Boundary
- International / National Designations
- Important Heritage Sites
- 2115 Indicative Floodplain (1 in 200 year) provided from PUSH





This map is reproduced from Ordnance Survey material with the permission of Ordnance Survey on behalf of the Controller of Her Majesty's Stationery Office © Crown copyright. Unauthorised reproduction infringes Crown copyright and may lead to prosecution or civil proceedings. New Forest District Council licence no. 100026220 2004

**POLICY**

From Present Day (up to 2025):	Medium-Term (2025 to 2055):	Long-Term (2055 to 2105):
Hold the Line	Hold the Line	Hold the Line

- Indicative erosion zone up to 2025
- Indicative erosion zone up to 2055
- Indicative erosion zone up to 2105
- Policy Unit Boundary
- International / National Designations
- Important Heritage Sites
- 2115 Indicative Floodplain (1 in 200 year) provided from PUSH