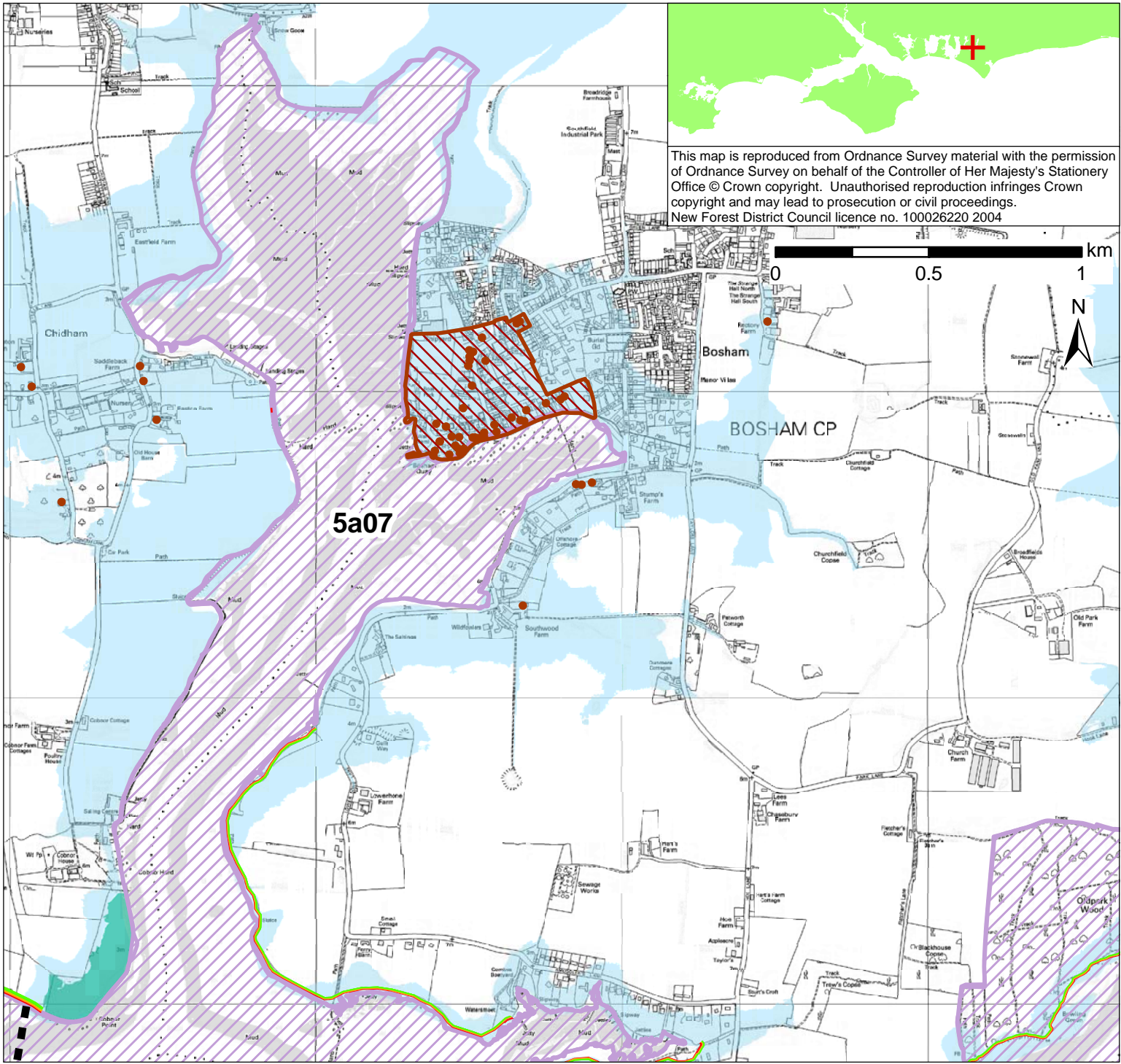


POLICY

From Present Day (up to 2025):	Medium-Term (2025 to 2055):	Long-Term (2055 to 2105):
<p>Hold the Line- No public funding available for private defences (Localised managed realignment at East Chidham. Location of secondary defences to be determined)</p>	<p>Hold the Line- No public funding available for private defences</p>	<p>Hold the Line- No public funding available for private defences</p>

- Indicative erosion zone up to 2025
- Indicative erosion zone up to 2055
- Indicative erosion zone up to 2105
- Policy Unit Boundary
- International / National Designations
- Important Heritage Sites
- 2108 Flood Risk Area (1 in 200 year) © Environment Agency



This map is reproduced from Ordnance Survey material with the permission of Ordnance Survey on behalf of the Controller of Her Majesty's Stationery Office © Crown copyright. Unauthorised reproduction infringes Crown copyright and may lead to prosecution or civil proceedings. New Forest District Council licence no. 100026220 2004

5a07

POLICY

From Present Day (up to 2025):	Medium-Term (2025 to 2055):	Long-Term (2055 to 2105):
<p>Hold the Line- No public funding available for private defences (Localised managed realignment at East Chidham. Location of secondary defences to be determined)</p>	<p>Hold the Line- No public funding available for private defences</p>	<p>Hold the Line- No public funding available for private defences</p>

- Indicative erosion zone up to 2025
- Indicative erosion zone up to 2055
- Indicative erosion zone up to 2105
- Policy Unit Boundary
- International / National Designations
- Important Heritage Sites
- 2108 Flood Risk Area (1 in 200 year) © Environment Agency
- Potential Area Considered for Managed Realignment