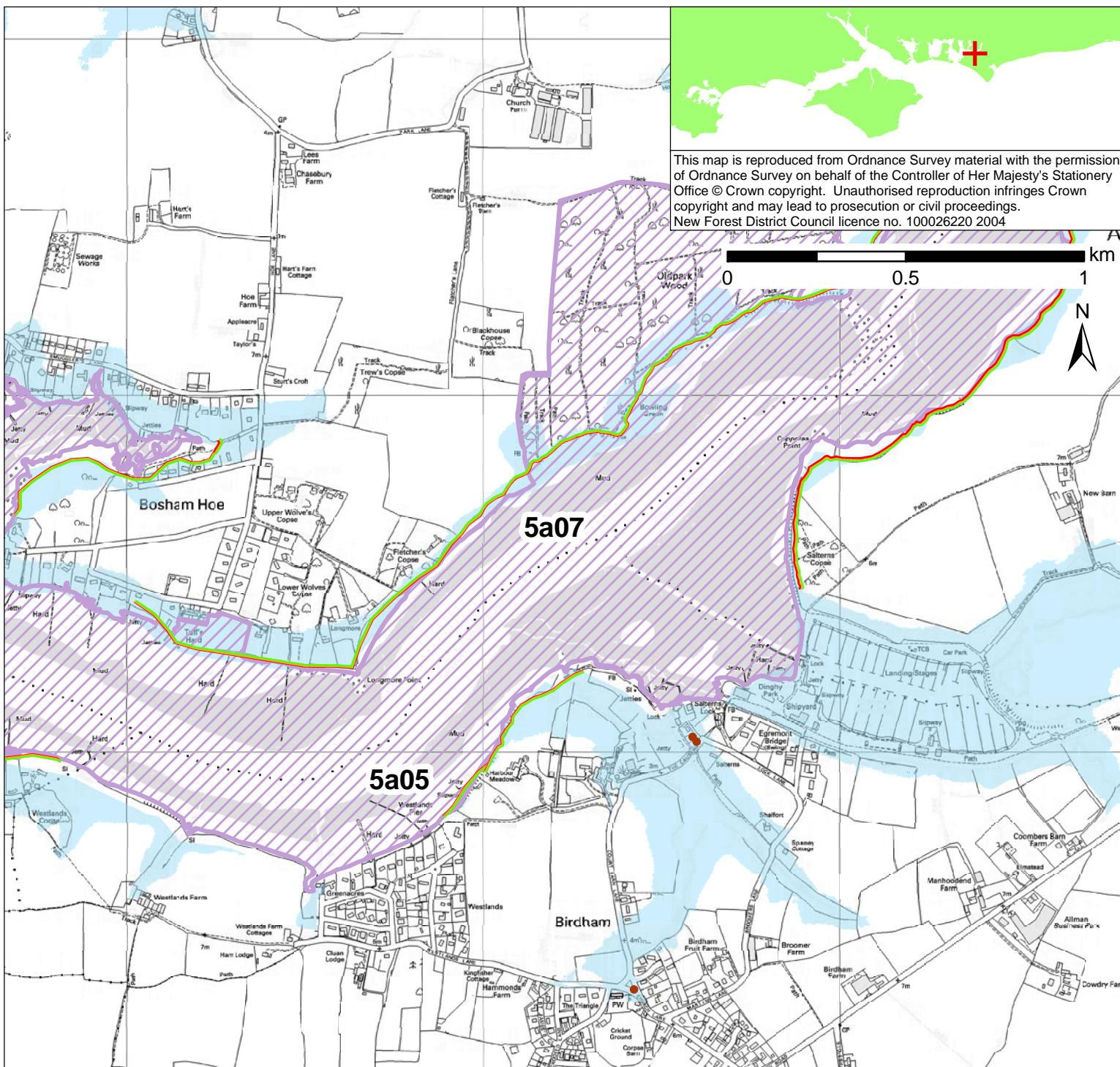


This map is reproduced from Ordnance Survey material with the permission of Ordnance Survey on behalf of the Controller of Her Majesty's Stationery Office © Crown copyright. Unauthorised reproduction infringes Crown copyright and may lead to prosecution or civil proceedings. New Forest District Council licence no. 100026220 2004

POLICY	From Present Day (up to 2025):	Medium-Term (2025 to 2055):	Long-Term (2055 to 2105):
	Hold the Line- No public funding available for private defences	Hold the Line- No public funding available for private defences	Hold the Line- No public funding available for private defences (Localised managed realignment at Horse Pond. Location of secondary defences to be determined)

- Indicative erosion zone up to 2025
- Indicative erosion zone up to 2055
- Indicative erosion zone up to 2105
- Policy Unit Boundary
- International / National Designations
- Important Heritage Sites
- 2108 Flood Risk Area (1 in 200 year) © Environment Agency
- Potential Area Considered for Managed Realignment



**POLICY**

From Present Day (up to 2025):

Medium-Term (2025 to 2055):

Long-Term (2055 to 2105):

Hold the Line-  
No public funding available for private defences

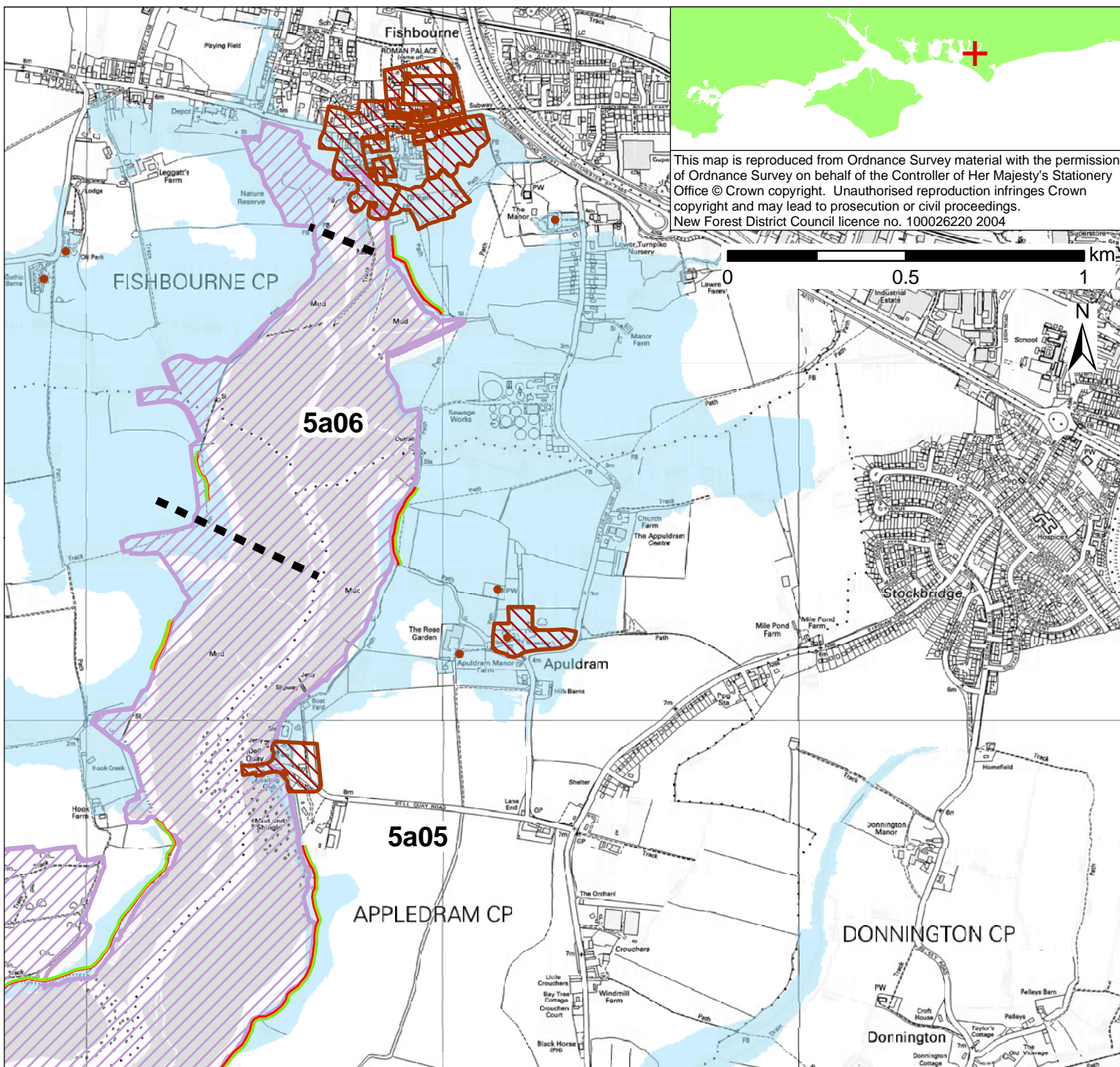
Hold the Line-  
No public funding available for private defences

Hold the Line-  
No public funding available for private defences  
(Localised managed realignment at Horse Pond. Location of secondary defences to be determined)

- Indicative erosion zone up to 2025
- Indicative erosion zone up to 2055
- Indicative erosion zone up to 2105

- International / National Designations
- Important Heritage Sites
- 2108 Flood Risk Area (1 in 200 year) © Environment Agency

■ ■ ■ Policy Unit Boundary



**POLICY**

From Present Day (up to 2025):

Hold the Line-  
No public funding available for private defences

Medium-Term (2025 to 2055):

Hold the Line-  
No public funding available for private defences

Long-Term (2055 to 2105):

Hold the Line-  
No public funding available for private defences  
(Localised managed realignment at Horse Pond. Location of secondary defences to be determined)

- Indicative erosion zone up to 2025
- Indicative erosion zone up to 2055
- Indicative erosion zone up to 2105
- Policy Unit Boundary
- International / National Designations
- Important Heritage Sites
- 2108 Flood Risk Area (1 in 200 year) © Environment Agency