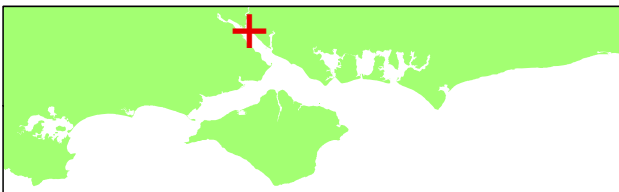
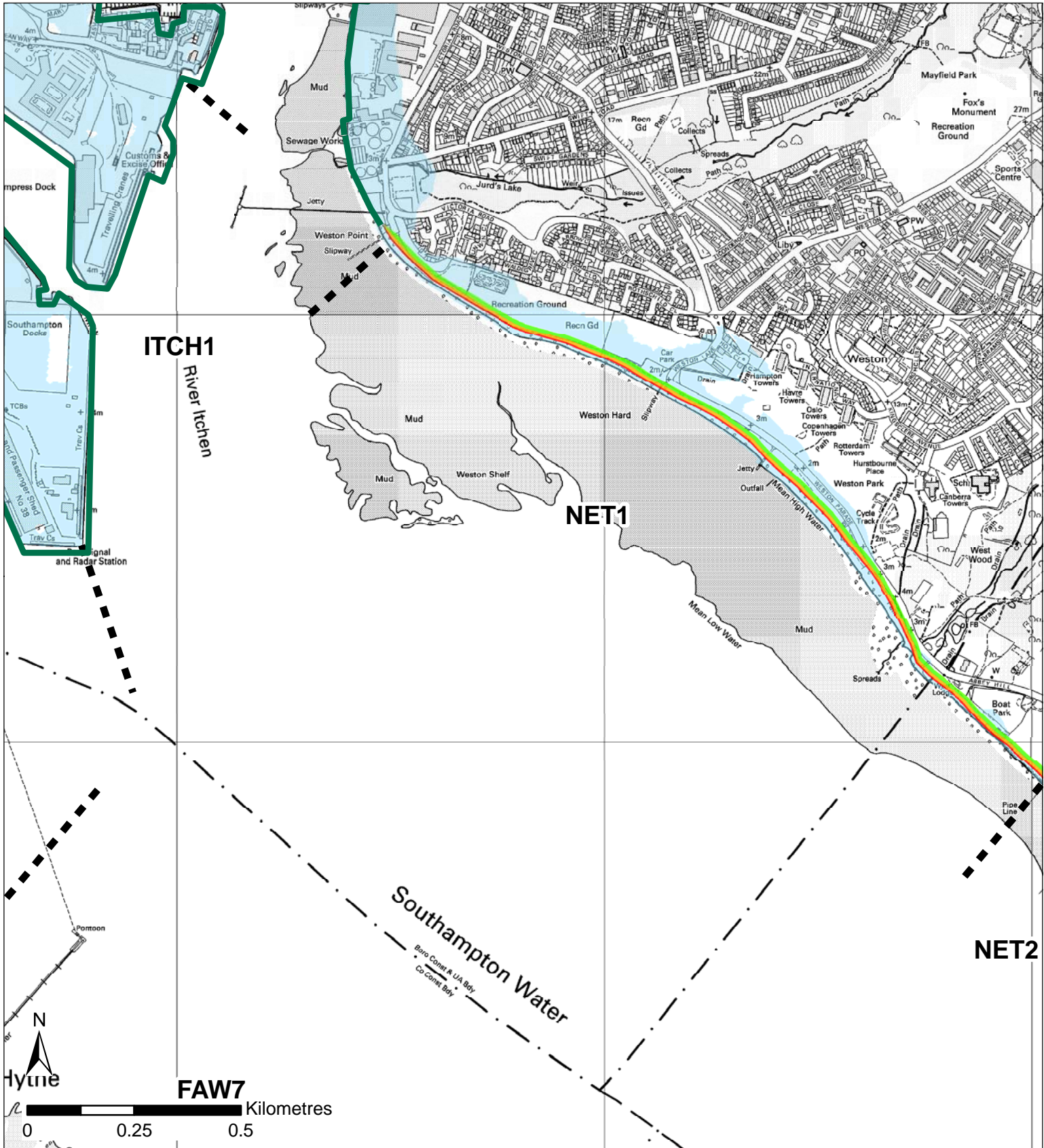


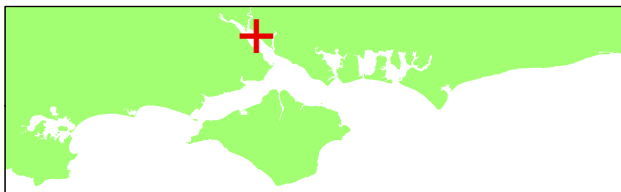
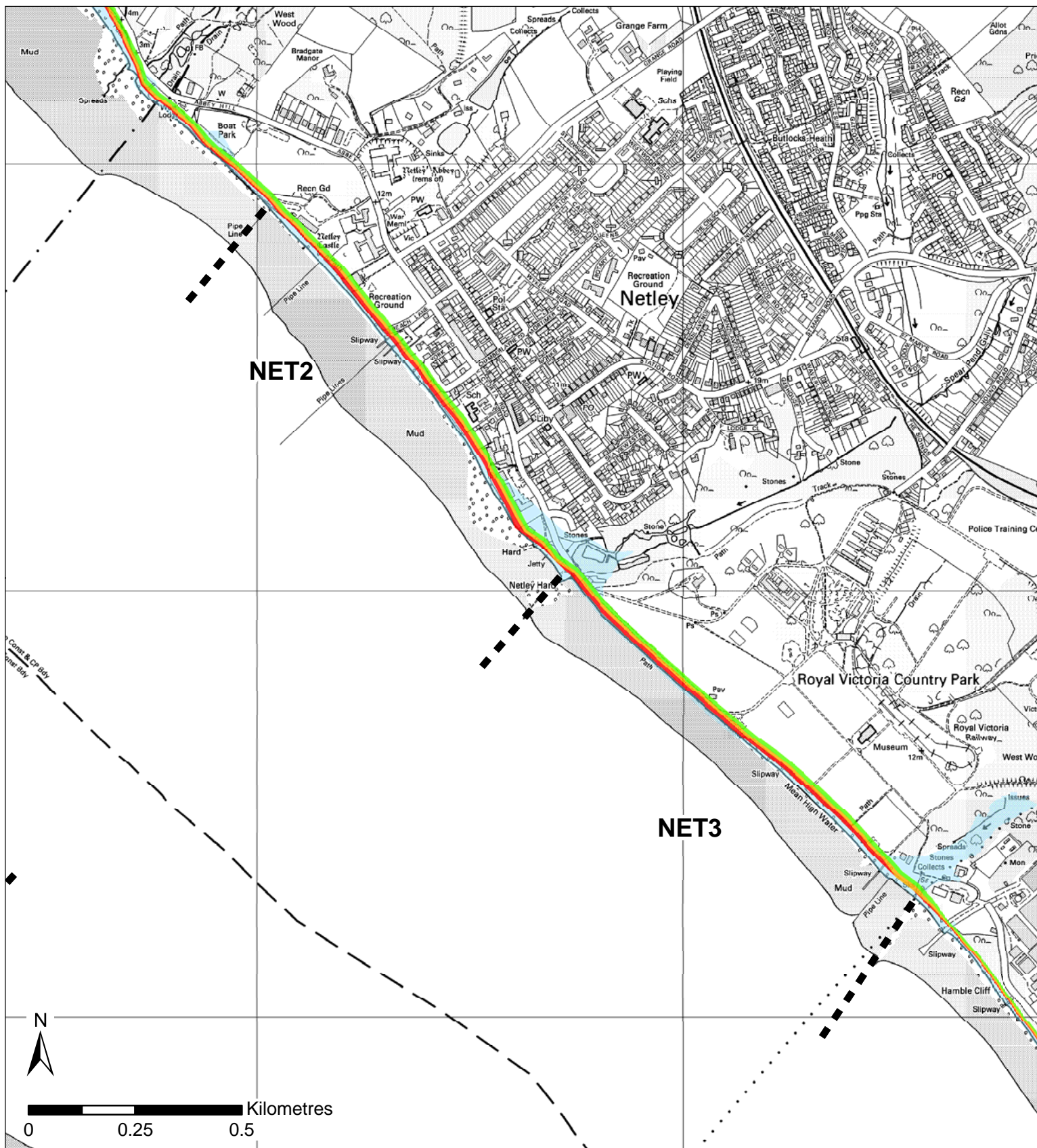
- Unit Boundary
- Complex coastal processes
- Red Indicative erosion zone up to 2025
- Orange Indicative erosion zone up to 2055
- Green Indicative erosion zone up to 2105
- Light Blue 2115 Indicative Floodplain (1 in 200 year) provided from PUSH

This map is reproduced from Ordnance Survey material with the permission of Ordnance Survey on behalf of the Controller of Her Majesty's Stationary Office © Crown copyright. Unauthorised reproduction infringes Crown copyright and may lead to prosecution or civil proceedings. New Forest District Council licence no. 100026220 2004



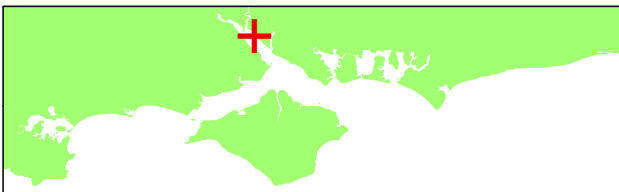
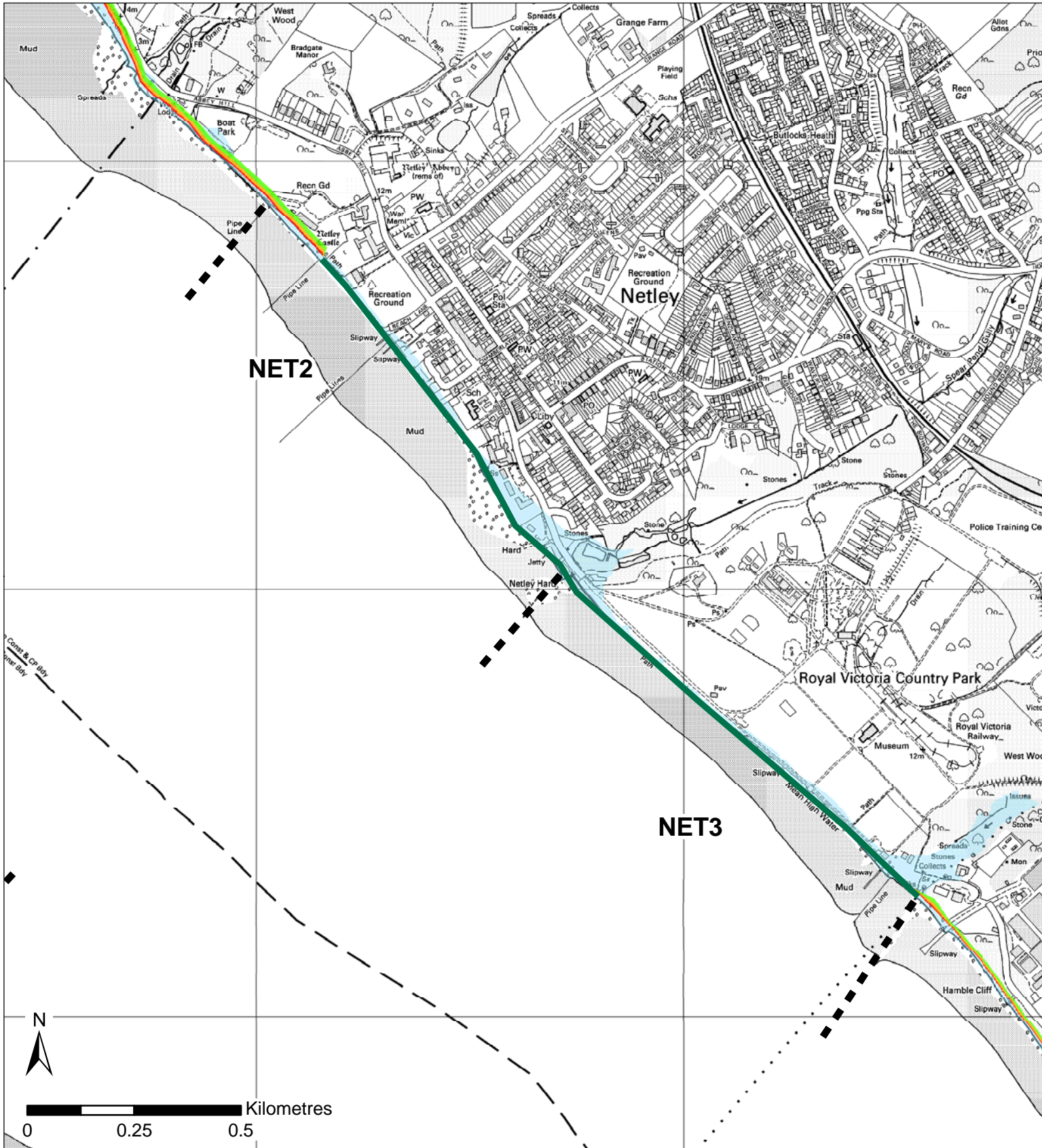
- ■ ■ Unit Boundary
- Shoreline Defences
- Indicative erosion zone up to 2025
- Indicative erosion zone up to 2055
- Indicative erosion zone up to 2105
- 2115 Indicative Floodplain (1 in 200 year) provided from PUSH

This map is reproduced from Ordnance Survey material with the permission of Ordnance Survey on behalf of the Controller of Her Majesty's Stationary Office © Crown copyright. Unauthorised reproduction infringes Crown copyright and may lead to prosecution or civil proceedings. New Forest District Council licence no. 100026220 2004



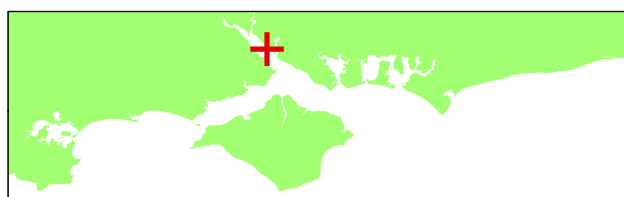
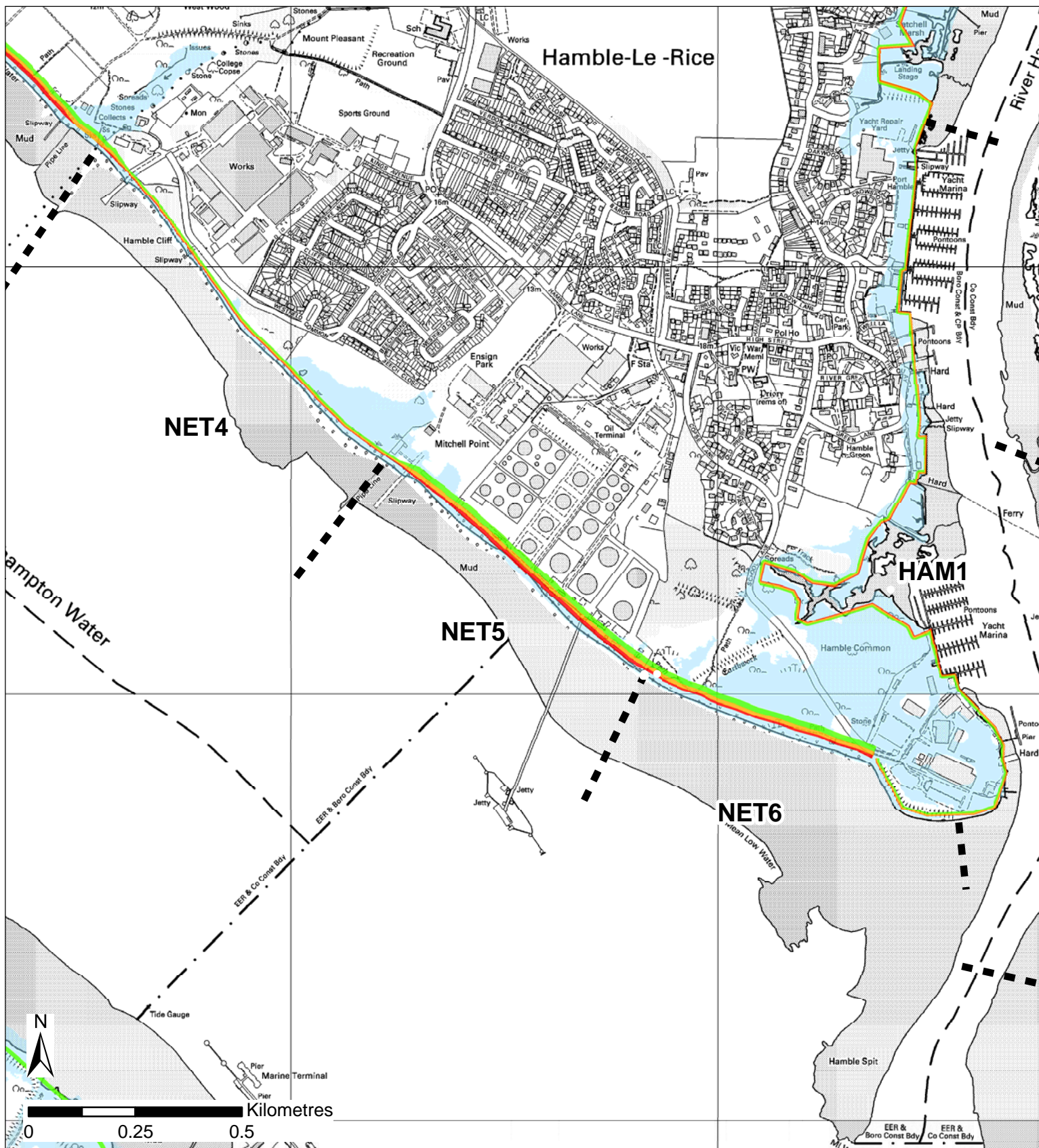
This map is reproduced from Ordnance Survey material with the permission of Ordnance Survey on behalf of the Controller of Her Majesty's Stationary Office © Crown copyright. Unauthorised reproduction infringes Crown copyright and may lead to prosecution or civil proceedings. New Forest District Council licence no. 100026220 2004

- Unit Boundary
- Complex coastal processes
- Red Indicative erosion zone up to 2025
- Orange Indicative erosion zone up to 2055
- Green Indicative erosion zone up to 2105
- Light Blue 2115 Indicative Floodplain (1 in 200 year) provided from PUSH



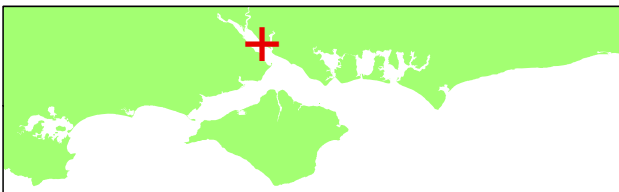
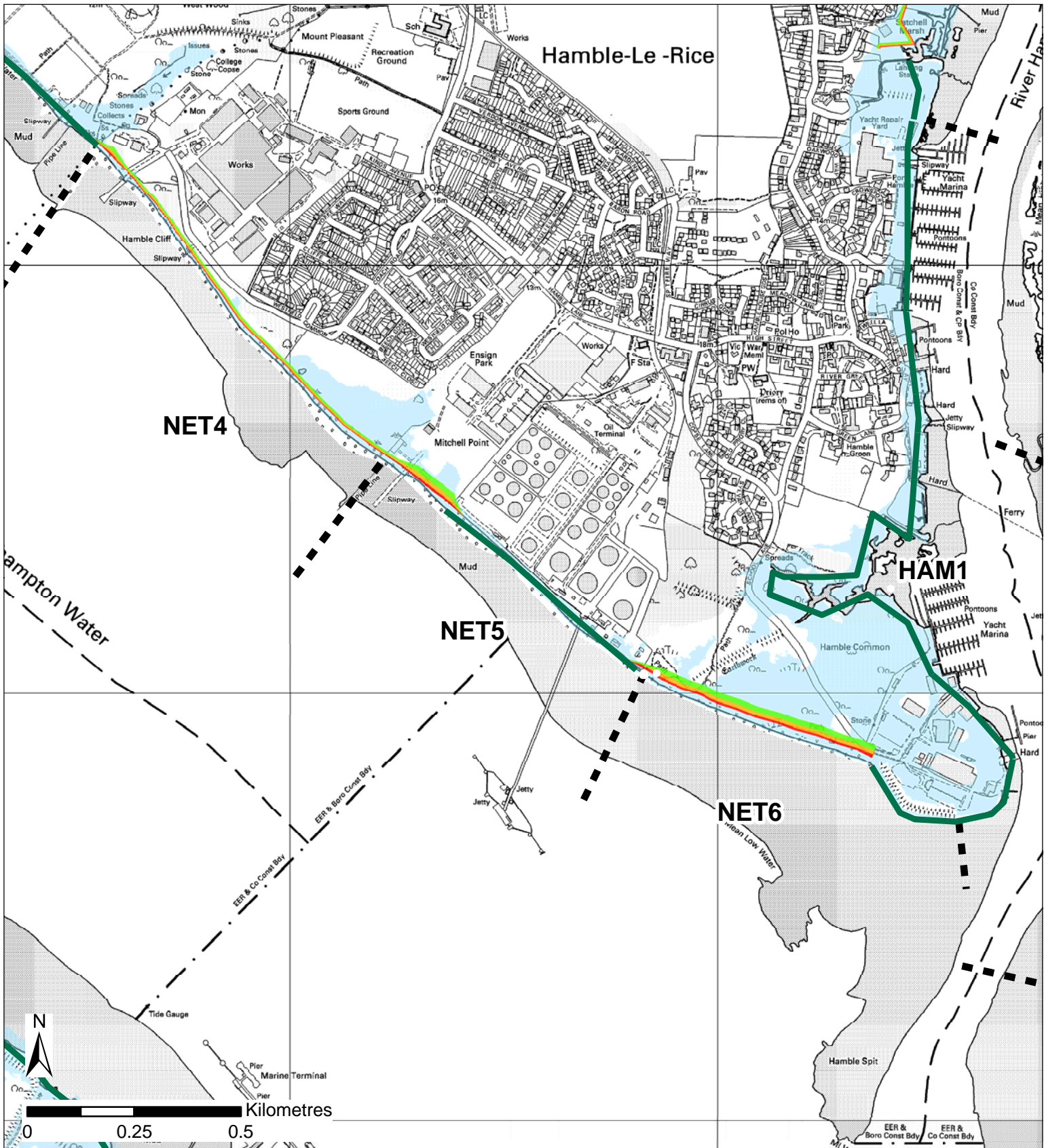
- ■ ■ Unit Boundary
- Shoreline Defences
- Indicative erosion zone up to 2025
- Indicative erosion zone up to 2055
- Indicative erosion zone up to 2105
- 2115 Indicative Floodplain (1 in 200 year) provided from PUSH

This map is reproduced from Ordnance Survey material with the permission of Ordnance Survey on behalf of the Controller of Her Majesty's Stationary Office © Crown copyright. Unauthorised reproduction infringes Crown copyright and may lead to prosecution or civil proceedings.
New Forest District Council licence no. 100026220 2004



- ■ ■ Unit Boundary
- Complex coastal processes
- Indicative erosion zone up to 2025
- Indicative erosion zone up to 2055
- Indicative erosion zone up to 2105
- 2115 Indicative Floodplain (1 in 200 year) provided from PUSH

This map is reproduced from Ordnance Survey material with the permission of Ordnance Survey on behalf of the Controller of Her Majesty's Stationery Office © Crown copyright. Unauthorised reproduction infringes Crown copyright and may lead to prosecution or civil proceedings.
New Forest District Council licence no. 100026220 2004



- Unit Boundary
- Shoreline Defences
- Indicative erosion zone up to 2025
- Indicative erosion zone up to 2055
- Indicative erosion zone up to 2105
- 2115 Indicative Floodplain (1 in 200 year) provided from PUSH

This map is reproduced from Ordnance Survey material with the permission of Ordnance Survey on behalf of the Controller of Her Majesty's Stationary Office © Crown copyright. Unauthorised reproduction infringes Crown copyright and may lead to prosecution or civil proceedings. New Forest District Council licence no. 100026220 2004