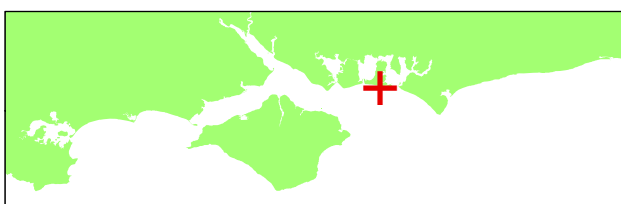
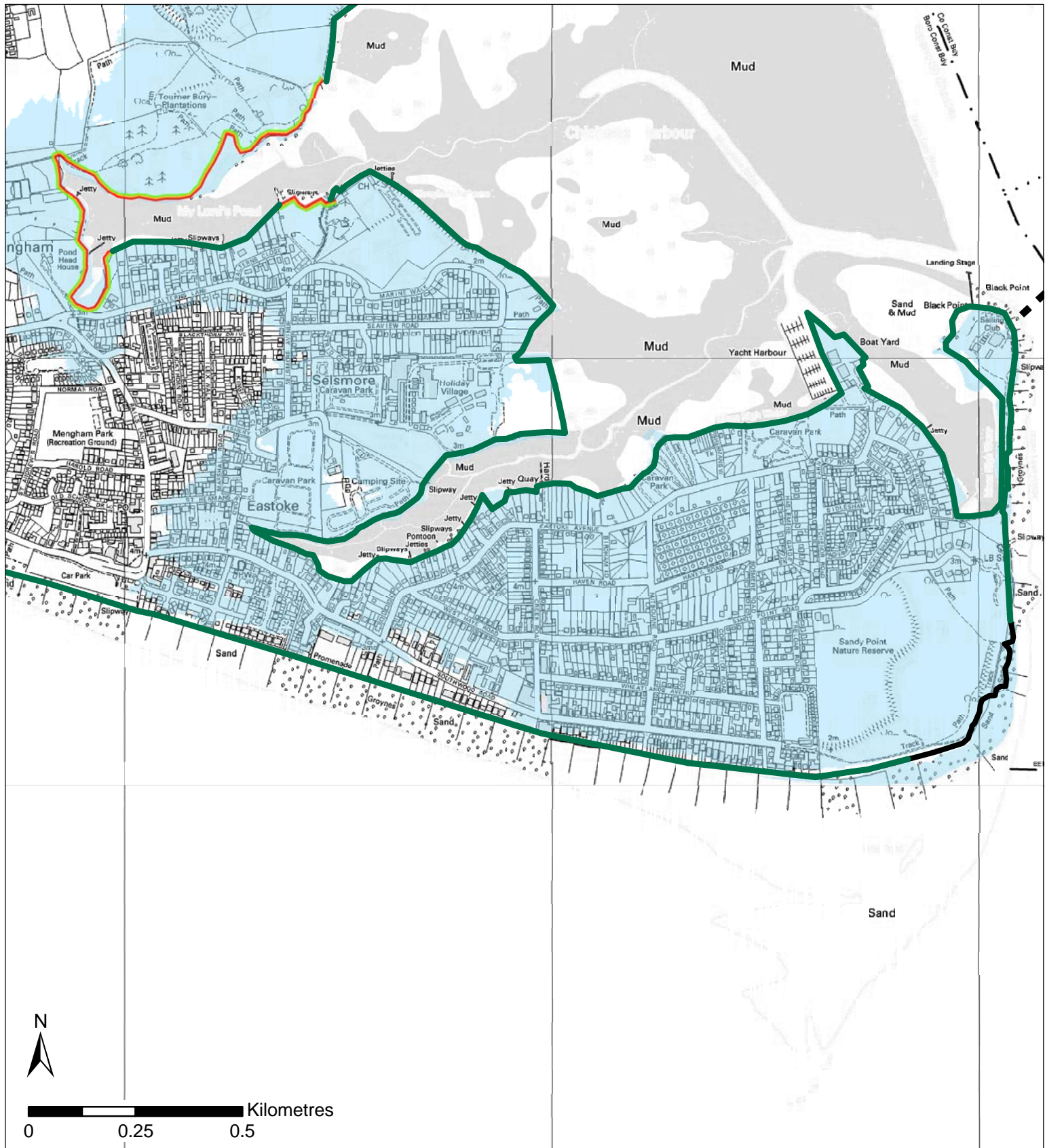


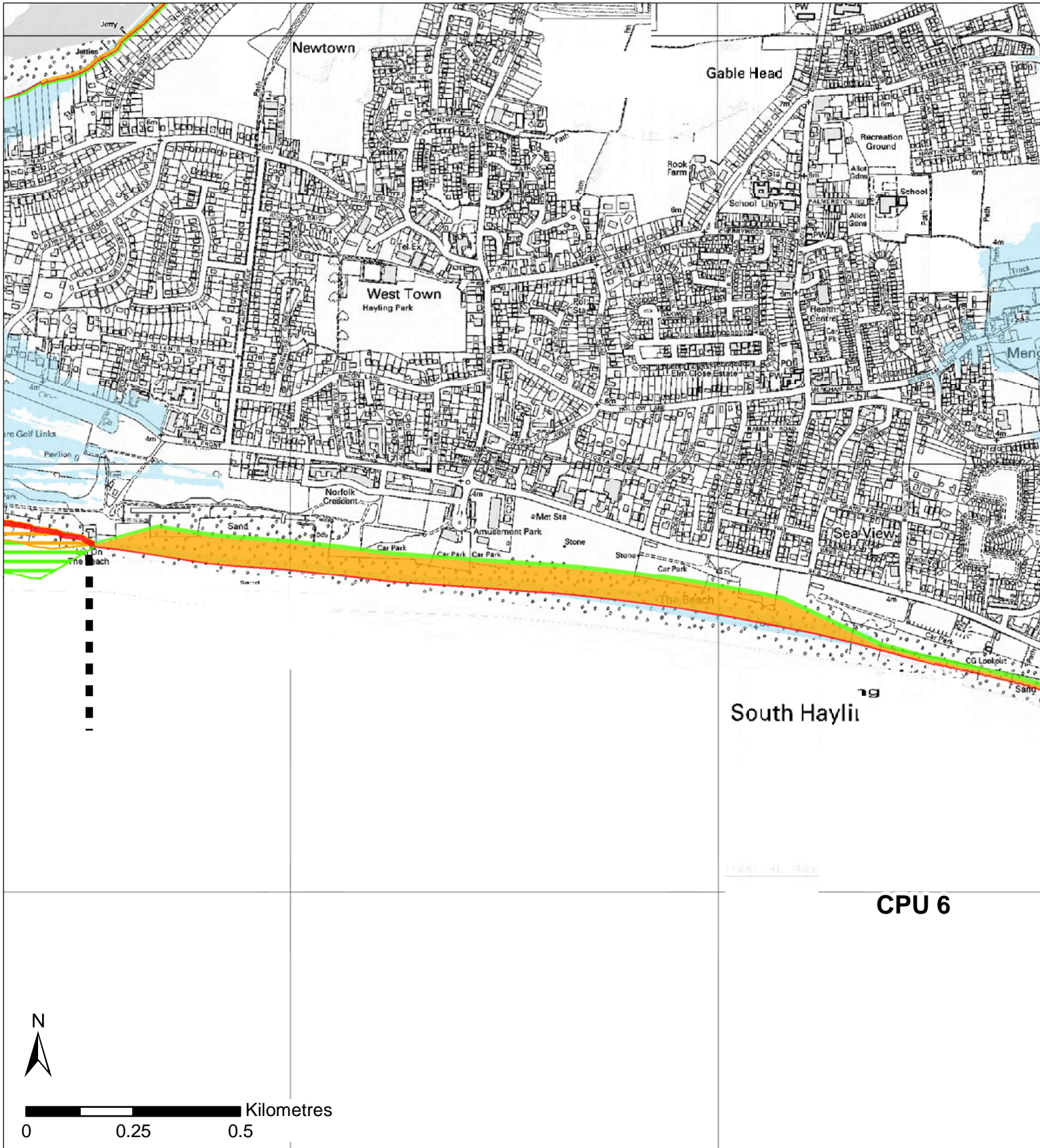
This map is reproduced from Ordnance Survey material with the permission of Ordnance Survey on behalf of the Controller of Her Majesty's Stationary Office © Crown copyright. Unauthorised reproduction infringes Crown copyright and may lead to prosecution or civil proceedings. New Forest District Council licence no. 100026220 2004

- Unit Boundary
- Complex coastal processes
- Indicative erosion zone up to 2025
- Indicative erosion zone up to 2055
- Indicative erosion zone up to 2105
- 2115 Indicative Floodplain (1 in 200 year) provided from PUSH

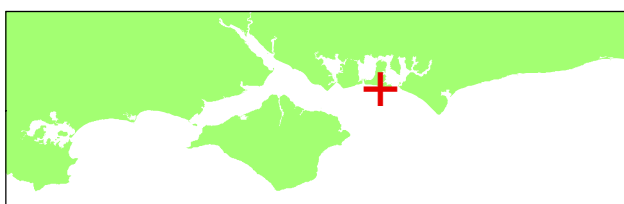


This map is reproduced from Ordnance Survey material with the permission of Ordnance Survey on behalf of the Controller of Her Majesty's Stationary Office © Crown copyright. Unauthorised reproduction infringes Crown copyright and may lead to prosecution or civil proceedings.  
New Forest District Council licence no. 100026220 2004

- ■ | Unit Boundary
- Shoreline Defences
- Complex coastal processes
- Indicative erosion zone up to 2025
- Indicative erosion zone up to 2055
- Indicative erosion zone up to 2105
- 2115 Indicative Floodplain (1 in 200 year) provided from PUSH

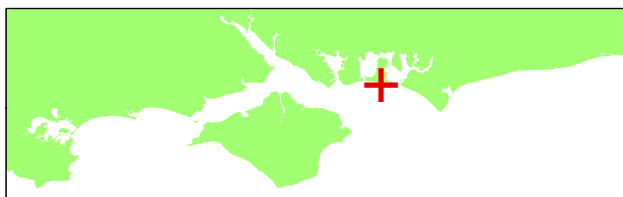
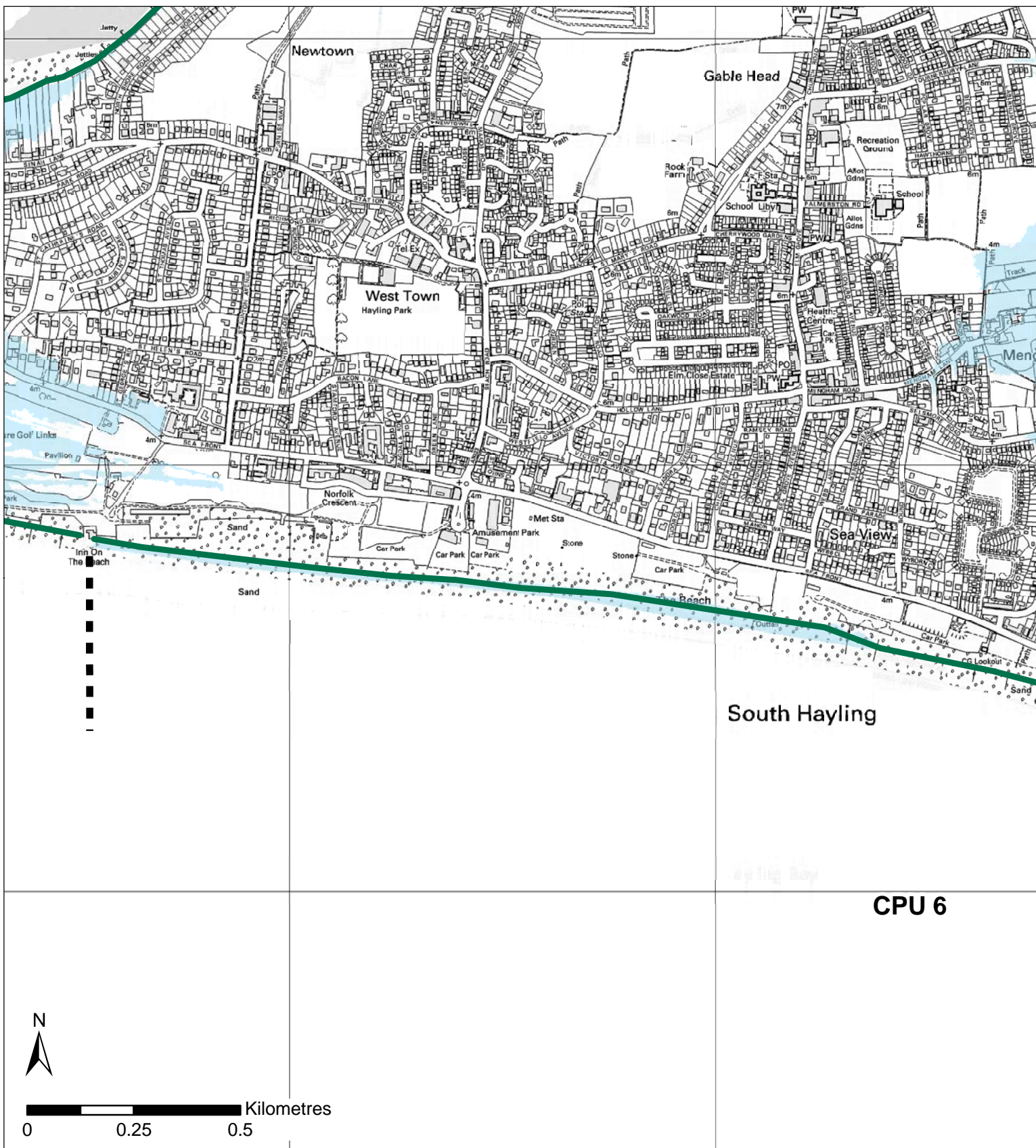


**CPU 6**



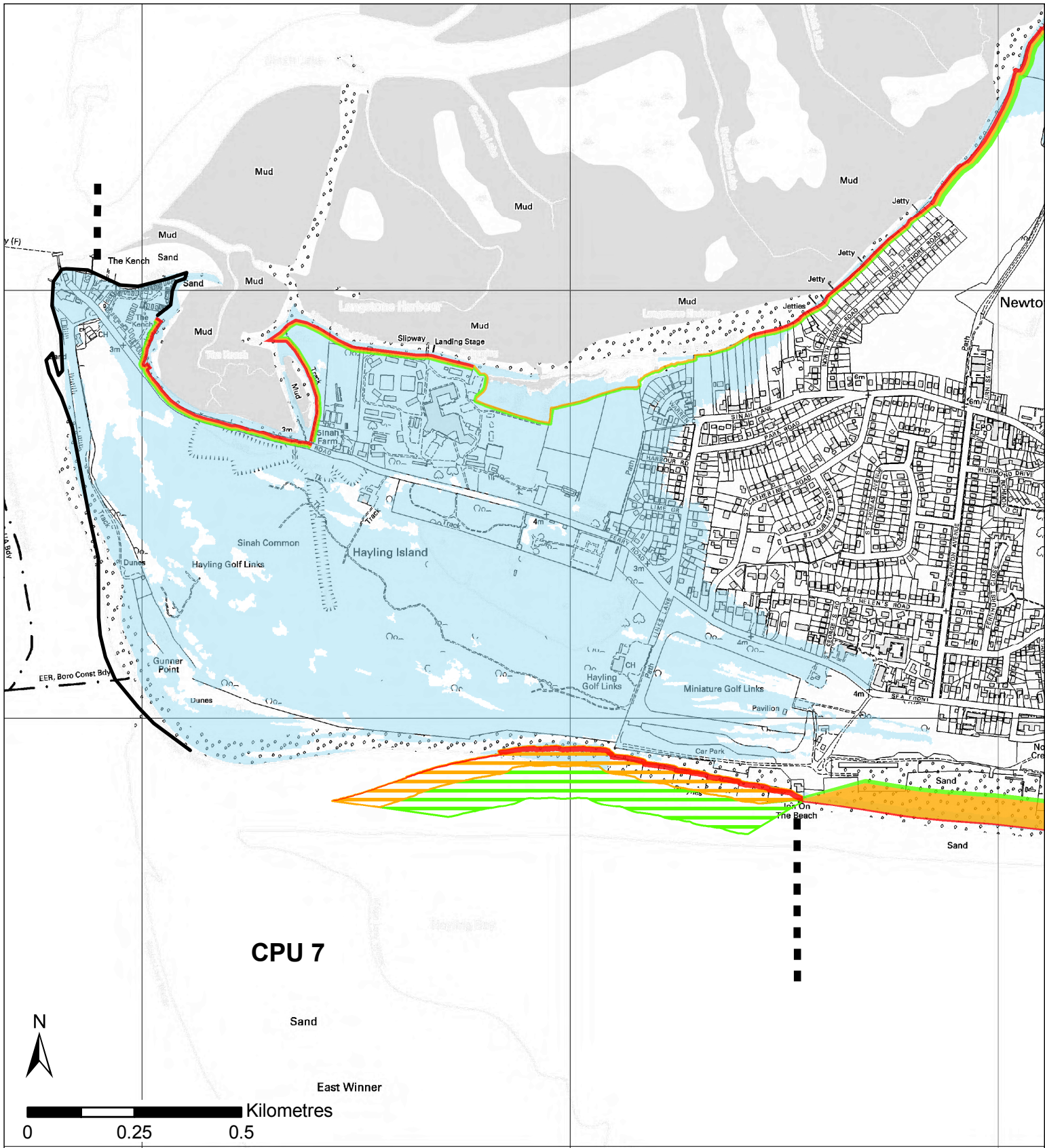
This map is reproduced from Ordnance Survey material with the permission of Ordnance Survey on behalf of the Controller of Her Majesty's Stationary Office © Crown copyright. Unauthorised reproduction infringes Crown copyright and may lead to prosecution or civil proceedings.  
New Forest District Council licence no. 100026220 2004

- ■ Unit Boundary
- Complex coastal processes
- Red Indicative erosion zone up to 2025
- Orange Indicative erosion zone up to 2055
- Green Indicative erosion zone up to 2105
- Orange with white border Indicative accretion zone up to 2055
- Green with white border Indicative accretion zone up to 2105
- Blue 2115 Indicative Floodplain (1 in 200 year) provided from PUSH



This map is reproduced from Ordnance Survey material with the permission of Ordnance Survey on behalf of the Controller of Her Majesty's Stationary Office © Crown copyright. Unauthorised reproduction infringes Crown copyright and may lead to prosecution or civil proceedings. New Forest District Council licence no. 100026220 2004

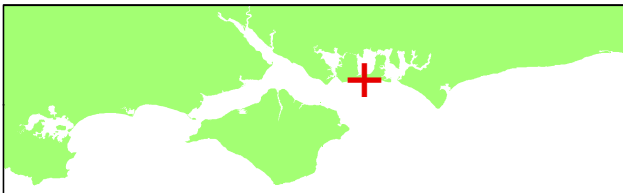
- ■ ■ Unit Boundary
- Shoreline Defences
- Indicative erosion zone up to 2025
- Indicative erosion zone up to 2055
- Indicative erosion zone up to 2105
- 2115 Indicative Floodplain (1 in 200 year) provided from PUSH



**CPU 7**

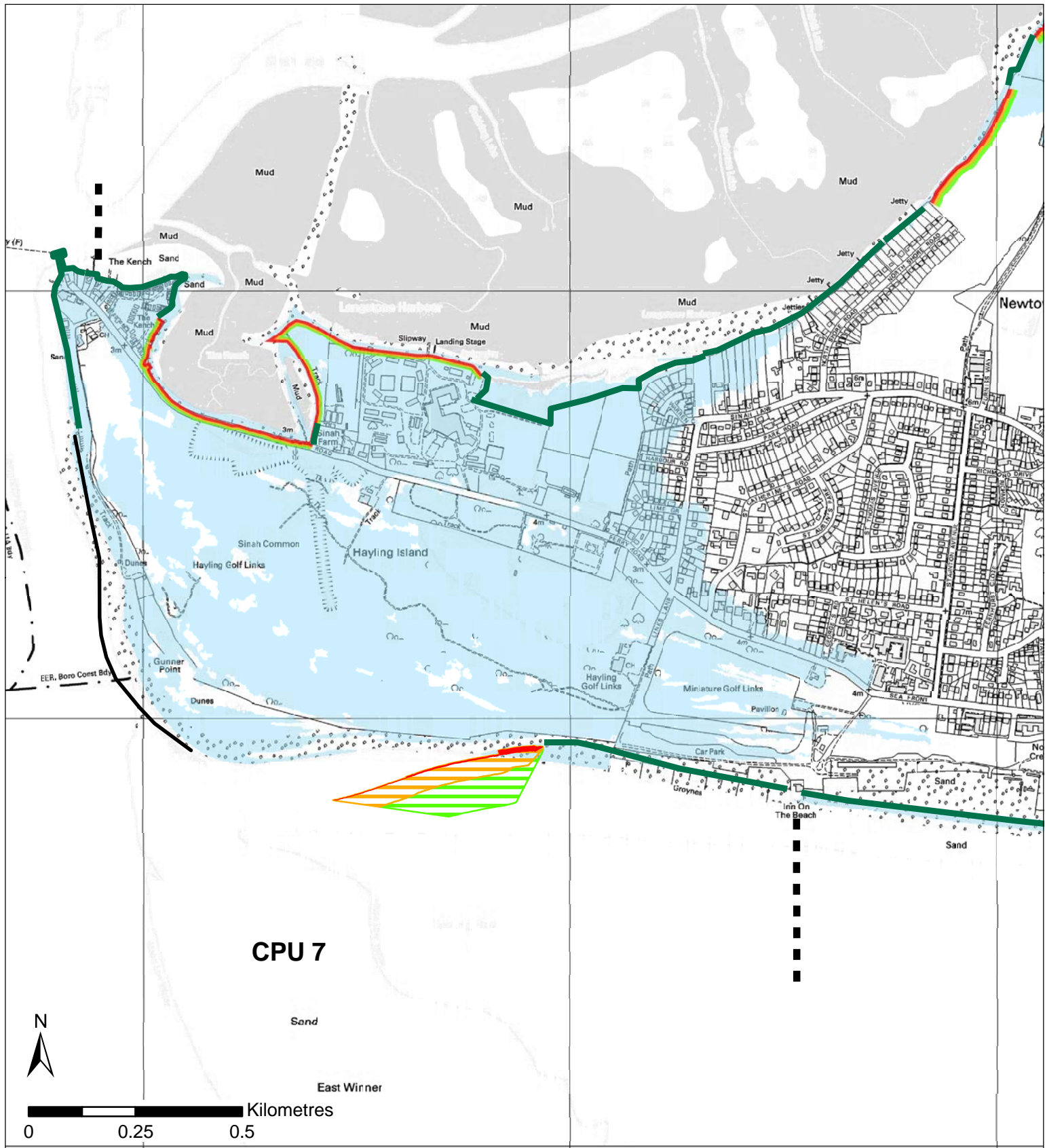


0 0.25 0.5 Kilometres



This map is reproduced from Ordnance Survey material with the permission of Ordnance Survey on behalf of the Controller of Her Majesty's Stationary Office © Crown copyright. Unauthorised reproduction infringes Crown copyright and may lead to prosecution or civil proceedings.  
New Forest District Council licence no. 100026220 2004

- ■ Unit Boundary
- Complex coastal processes
- Indicative erosion zone up to 2025
- Indicative erosion zone up to 2055
- Indicative erosion zone up to 2105
- ▨▨▨ Indicative accretion zone up to 2055
- ▨▨▨ Indicative accretion zone up to 2105
- 2115 Indicative Floodplain (1 in 200 year) provided from PUSH



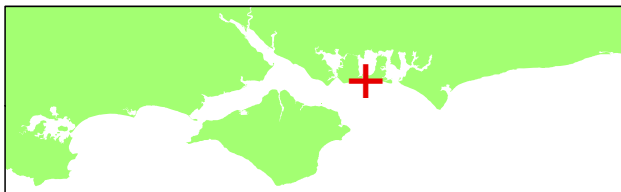
**CPU 7**

Sand

East Wimmer

Kilometres

0 0.25 0.5



This map is reproduced from Ordnance Survey material with the permission of Ordnance Survey on behalf of the Controller of Her Majesty's Stationary Office © Crown copyright. Unauthorised reproduction infringes Crown copyright and may lead to prosecution or civil proceedings. New Forest District Council licence no. 100026220 2004

- ■ Unit Boundary
- Shoreline Defences
- Complex coastal processes
- Indicative erosion zone up to 2025
- Indicative erosion zone up to 2055
- Indicative erosion zone up to 2105
- ▨ Indicative accretion zone up to 2055
- ▨ Indicative accretion zone up to 2105
- 2115 Indicative Floodplain (1 in 200 year) provided from PUSH