

| Policy Unit 5AH107 North Shore Road, New Town to West Lane (Stoke) | | |
|--|--|--|
| Summary description of Policy Unit | | |
| <p>This largely undeveloped frontage comprises agricultural grade 2 land and the regionally important amenity and recreational Hayling Billy footpath. The tidal floodplain is restricted by the topography, as the shoreline is marked by a low cliff for much of its length. The existing defences are owned and maintained by the County Council and private individuals, although there are some sections maintained by the Environment Agency. Inter-tidal habitats of International, European and national nature conservation importance support nearby and adjacent SPA/Ramsar sites. Minimal heritage assets within the tidal flood plain but include monuments, historic buildings and maritime features.</p> | | |
| Final policy options | | SMP1 Ref n/a |
| Epoch 1 From Present Day (up to 2025) | Epoch 2 Medium Term (2025 to 2055) | Epoch 3 Long Term (2055 to 2105) |
| No Active Intervention with localised Hold the Line for Newtown | No Active Intervention with localised Hold the Line for Newtown | No Active Intervention with localised Hold the Line for Newtown |
| Summary of rationale behind final policy options | | |
| <p>The management intention for the largely undeveloped and undefended western central frontage of Hayling Island is to allow the shoreline to naturally develop as the erosion rates are relatively low, and for currently undefended sections to remain undefended. Although the tidal floodplain is relatively constrained, due to surface water run off flood storage issues there is a requirement for a localised policy of Hold The Line to provide flood protection to Newtown community. The low rates of erosion along this shoreline would result in minimal loss of agricultural land.</p> | | |
| <p>Adaptation options are being considered by Hampshire County Council for future management of Hayling Billy amenity footpath which may need to be rerouted or adapted in response to changes in shoreline position and sea level rises. The footpath is not considered as a defensive structure unless improvements to the seaward face will allow this to function as a secondary defence and create opportunities for natural processes to continue. In terms of mitigation for habitat losses, there are potential sites in the vicinity of Newtown that are topographically suitable for creation of inter-tidal habitats, although these sites would require further detailed economic and environmental studies to determine feasibility and could only proceed subject to landowners consent following further consultations.</p> | | |
| <p>Due to the environmental designations within Langstone Harbour, continued maintenance of defence structures will result however, in the continued loss of European and national nature conservation designated habitats such as inter-tidal foreshore habitats, through coastal squeeze. These losses will need to be mitigated within the same designated area or compensated for elsewhere and delivered through the Regional Habitat Creation Programme. Opportunities for habitat mitigation and compensation have been detailed within the Appropriate Assessment of the final policies.</p> | | |

Policy changes through Public Consultation

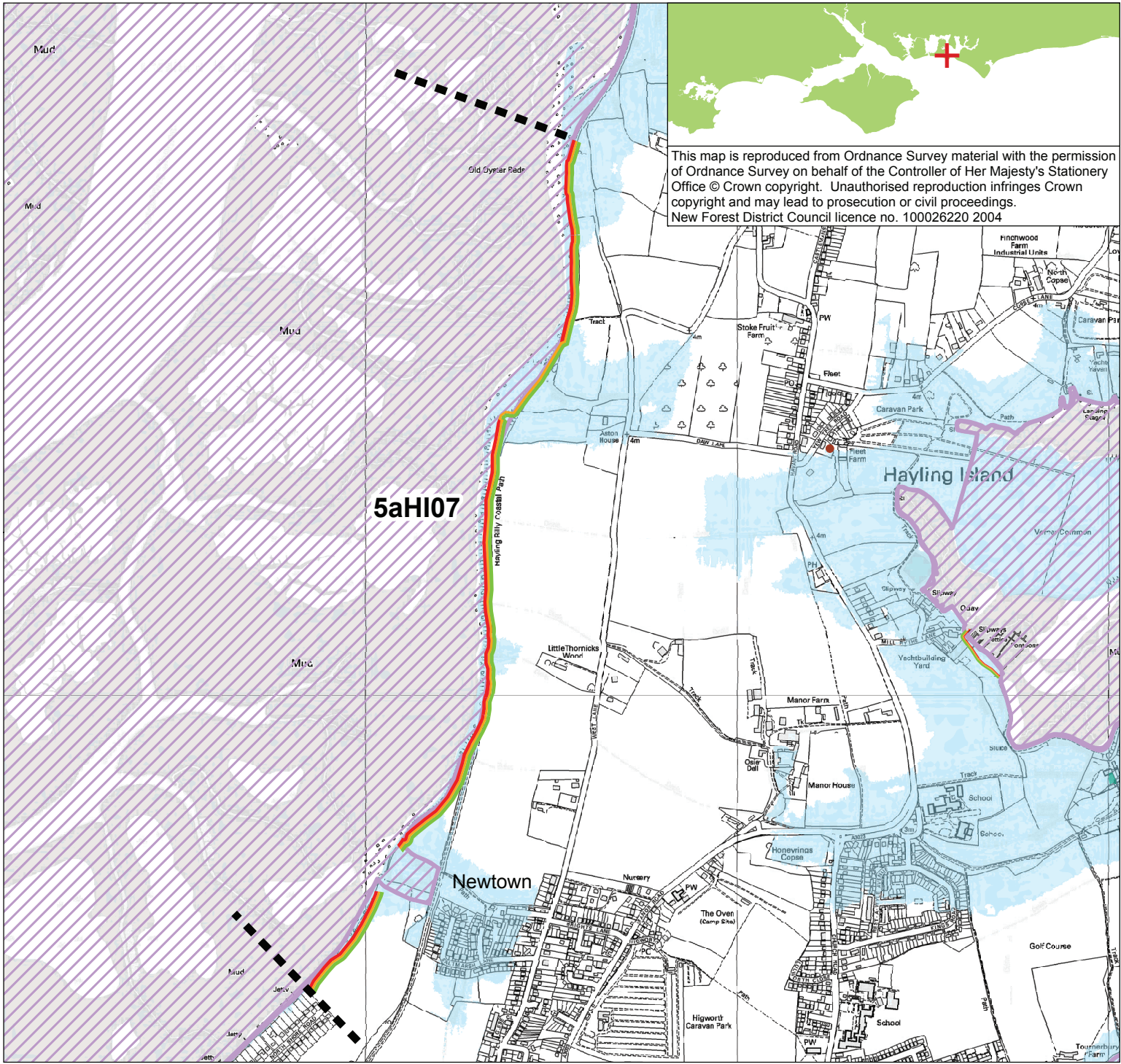
None. Funding sources clarified. An Information Note for landowners, planners and developers on privately owned coastal defences and coastal planning issues has been produced.

Funding

For the majority of the frontage no works are identified. For the localised defence works at Newtown, it is uncertain that central government funding could be secured. Alternative sources of public funding may be available to Local Authority or County Council for future adaptive management of footpath and open spaces. As is currently the case, no public funding would be available for continued maintenance of defences by private owners.

Further Studies (identified in Action Plan)

Hayling Island Flood and Coastal Erosion Risk Management Strategy



POLICY

| From Present Day (up to 2025): | Medium-Term (2025 to 2055): | Long-Term (2055 to 2105): |
|--|--|--|
| No Active Intervention (Hold the line at Newtown) | No Active Intervention (Hold the line at Newtown) | No Active Intervention (Hold the line at Newtown) |

- Indicative erosion zone up to 2025
- Indicative erosion zone up to 2055
- Indicative erosion zone up to 2105
- Policy Unit Boundary
- International / National Designations
- Important Heritage Sites
- 2115 Indicative Floodplain (1 in 200 year) provided from PUSH
- Potential Area Considered for Managed Realignment