

Policy Unit 5C22 Lymington Yacht Haven to Saltgrass Lane

Summary description of Policy Unit

This frontage extends from the marina at the southern end of the residential and commercial centre of Lymington Town, westwards to the tidal inlet at Sturt Pond, a tidal pond landward of Hurst Spit and Milford-on-Sea. Within the extensive tidal floodplain, which extends up the Avon Water valley, and the Dane Stream into Milford-on-Sea, the hinterland is largely undeveloped, but does contain individual residential properties, commercial and industrial assets, agricultural grade 2 land, former landfill sites and a gravel extraction site. The existing seawall defence was constructed 1990-92 following the breaching of Hurst Spit, which caused widespread failure along the previous embankment, and caused significant flooding to Keyhaven, Lymington, and throughout the West Solent. The Environment Agency maintains the seawall defence on behalf of the various private landowners and authorities. The foreshore and surrounding hinterland, that includes Keyhaven village but excludes Lymington Town, is within the New Forest National Park. Keyhaven has a small commercial fishing fleet, boat yards and sailing clubs. The existing seawall also provides important coastal access to and along the coast, which is limited within the West Solent. The inter-tidal saltmarshes and mudflats fronting the defences are within a Wildlife Trust Reserve, whereas the transitional freshwater habitats, saline lagoons, and reed beds landward of the defences are within a Local Nature Reserve. Both the inter-tidal and transitional freshwater habitats are of International, European and national nature conservation importance. These and inland areas provide very important high tide roost sites and support the adjacent and nearby SPA/Ramsar sites. Heritage assets include Scheduled Ancient Monuments, Conservation Area, historic and listed buildings, and maritime features.

Final policy options

SMP1 Ref
LYM3 Hold the Line

Epoch 1 From Present Day (up to 2025)	Epoch 2 Medium Term (2025 to 2055)	Epoch 3 Long Term (2055 to 2105)
Hold the Line	Hold the Line	Hold the Line

Summary of rationale behind final policy options

The key policy drivers to maintain the current EA maintained line of defence are to provide protection to an extensive area that covers undeveloped and agricultural land, as well as residential properties, commercial and industrial assets and a former landfill site. The area landward of the seawall is an Internationally, European and nationally designated site for its coastal grazing marsh, brackish lagoons and freshwater habitats and internationally important numbers of wildfowl and wading birds and provides a key refuge site within the Solent-wide network of high tide roost sites.

The nature reserve and seawall provide important coastal access to and along the Solent, which is limited within the Western Solent. It is also an important amenity and open space for the local communities.

Further detailed studies are required to determine the potential opportunities for

localised habitat creation or environmental enhancement at Saltgrass Lane and Avon Water, which need to consider a range of options, such as regulated tidal exchange, changes in land use and management and setback defences.

However maintenance and improvements to defences is unlikely to provide long term protection to the former landfill site and the saline and brackish lagoons immediately landward of the seawall, due to rising ground and sea water levels. A detailed assessment that addresses the socio-economic and environmental implications will be required, to determine the management option for the former landfill site in the medium to long term.

Due to the environmental designations within Western Solent maintenance of defence structures, realignment or construction of setback defences will result however, in the continued loss of European and national nature conservation designated habitats such as inter-tidal foreshore habitats, through coastal squeeze. These losses will need to be mitigated within the same designated area or compensated for elsewhere and delivered through the Regional Habitat Creation Programme. Opportunities for habitat mitigation and compensation have been detailed within the Appropriate Assessment of the final policies.

Policy changes through Public Consultation

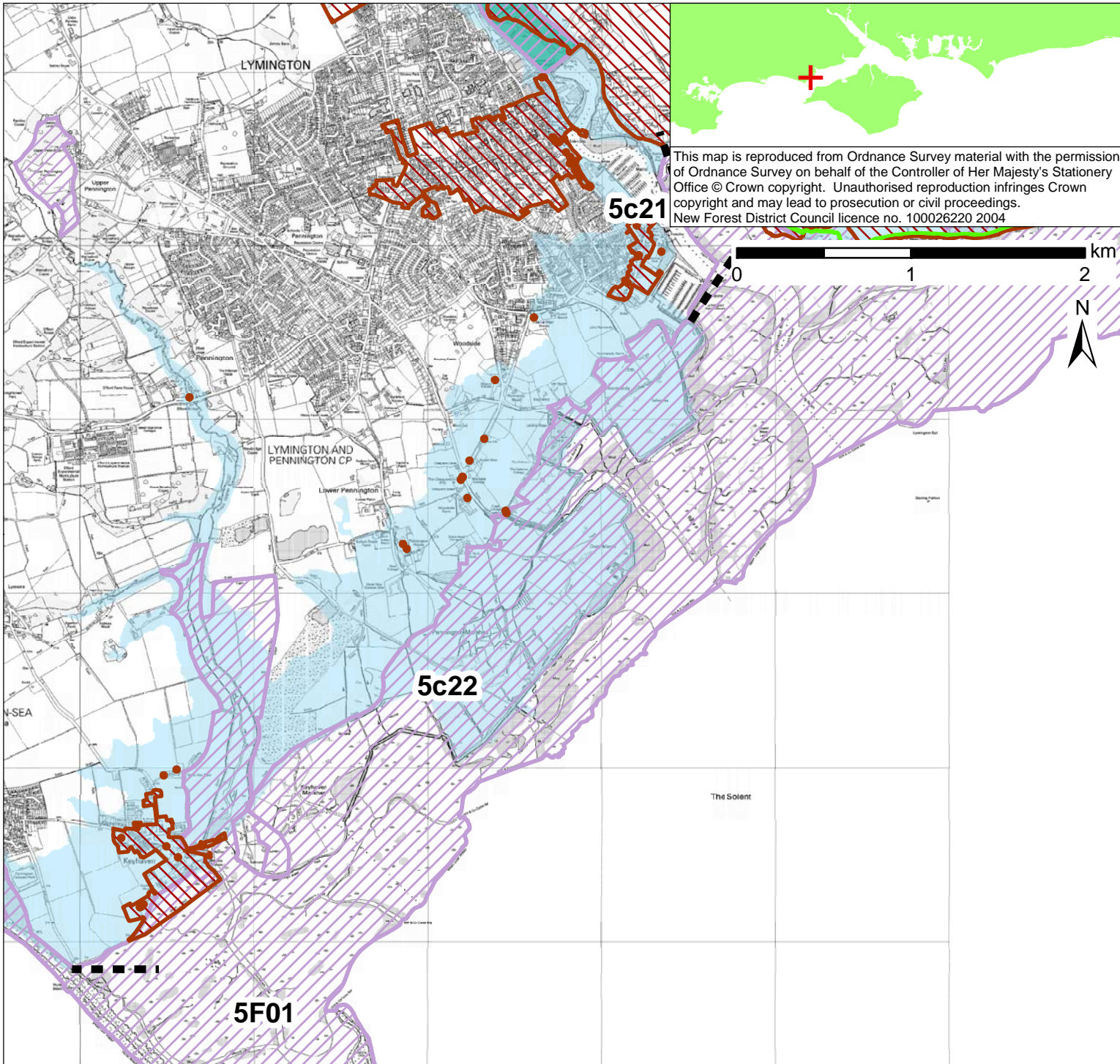
None.

Funding

Central government funding may be secured for identified works and those associated with potential future managed realignment/environmental enhancement.

Further Studies (identified in Action Plan)

Conclusion of the Western Solent Coastal Defence Strategy
Solent-wide network of high tide roost site study
Contaminated Land investigations (for Pennington frontage)



POLICY

From Present Day (up to 2025):	Medium-Term (2025 to 2055):	Long-Term (2055 to 2105):
Hold the Line	Hold the Line	Hold the Line

- Indicative erosion zone up to 2025
- Indicative erosion zone up to 2055
- Indicative erosion zone up to 2105
- Policy Unit Boundary
- International / National Designations
- Important Heritage Sites
- 2115 Indicative Floodplain (1 in 200 year) provided from PUSH
- Potential Area Considered for Managed Realignment