

**Policy Unit 5C12 Woodmill Lane to Redbridge**

**Summary description of Policy Unit**

The City of Southampton extending from Woodmill at the head of the tidal River Itchen, to Redbridge has considerable development and comprises significant numbers of residential and commercial properties, including marinas, boat yards and wharfs, and associated infrastructure including sewage works. The Port of Southampton is owned by Associated British Ports (ABP) and is the UK's second largest container port and cruise passenger port (with over 1 million passengers in 2009) and has been identified as a key international gateway and critical component of the nation's transport system. ABP Southampton is the statutory harbour authority and owns significant parts of the water frontage within Southampton Water, including the current operational quay frontages for the port. The tidal floodplain is relatively extensive due to the topography affecting the port assets, waterside development, transport network, sewage works, and other associated infrastructure. Within the River Itchen the majority of the existing defences are privately owned and maintained, with sections maintained by the Local Authority. Between Ocean Village and Redbridge is the commercial and industrial Port of Southampton, and the quay walls and defences are maintained by the Port Authority. There are listed and historic buildings and monuments, maritime features, registered Parks and Gardens and Conservation Areas. Within the River Itchen there are limited inter-tidal habitats of International, European and national nature conservation importance, which support the adjacent and nearby SPA/Ramsar sites.

**Final policy options**

SMP1 Ref  
ITCH2, 1 & TEST6 Hold the Line

**Epoch 1  
From Present Day  
(up to 2025)**

**Epoch 2  
Medium Term  
(2025 to 2055)**

**Epoch 3  
Long Term  
(2055 to 2105)**

**Hold the Line**

**Hold the Line**

**Hold the Line**

**Summary of rationale behind final policy options**

The final policy options are taken from and consistent with the draft Itchen, Weston, Netley and River Hamble Coastal Defence Strategy.

The key policy drivers to maintain and improve flood defences are to continue to provide considerable economic and societal benefits to the heavily developed and populated conurbations of Southampton City within the extensive area of coastal flood risk. ABP, the City Council and EA are working jointly with regard flood risk and climate change; however ABP do not consider the quay walls, which they maintain, as coastal defences. These walls may provide a different standard of flood protection to protect Port interests compared to those proposed for residential areas. The commercial and industrial dominated frontage extending northwest from the River Itchen, is principally owned, and the defence structures maintained, by the port authority. The west bank of the River Itchen is wholly developed with substantial numbers of residential and commercial properties, heritage sites, transport networks and other associated city centre infrastructure.

Opportunities for habitat mitigation and compensation have been detailed within the Appropriate Assessment of the final policies.

**Policy changes through Public Consultation**

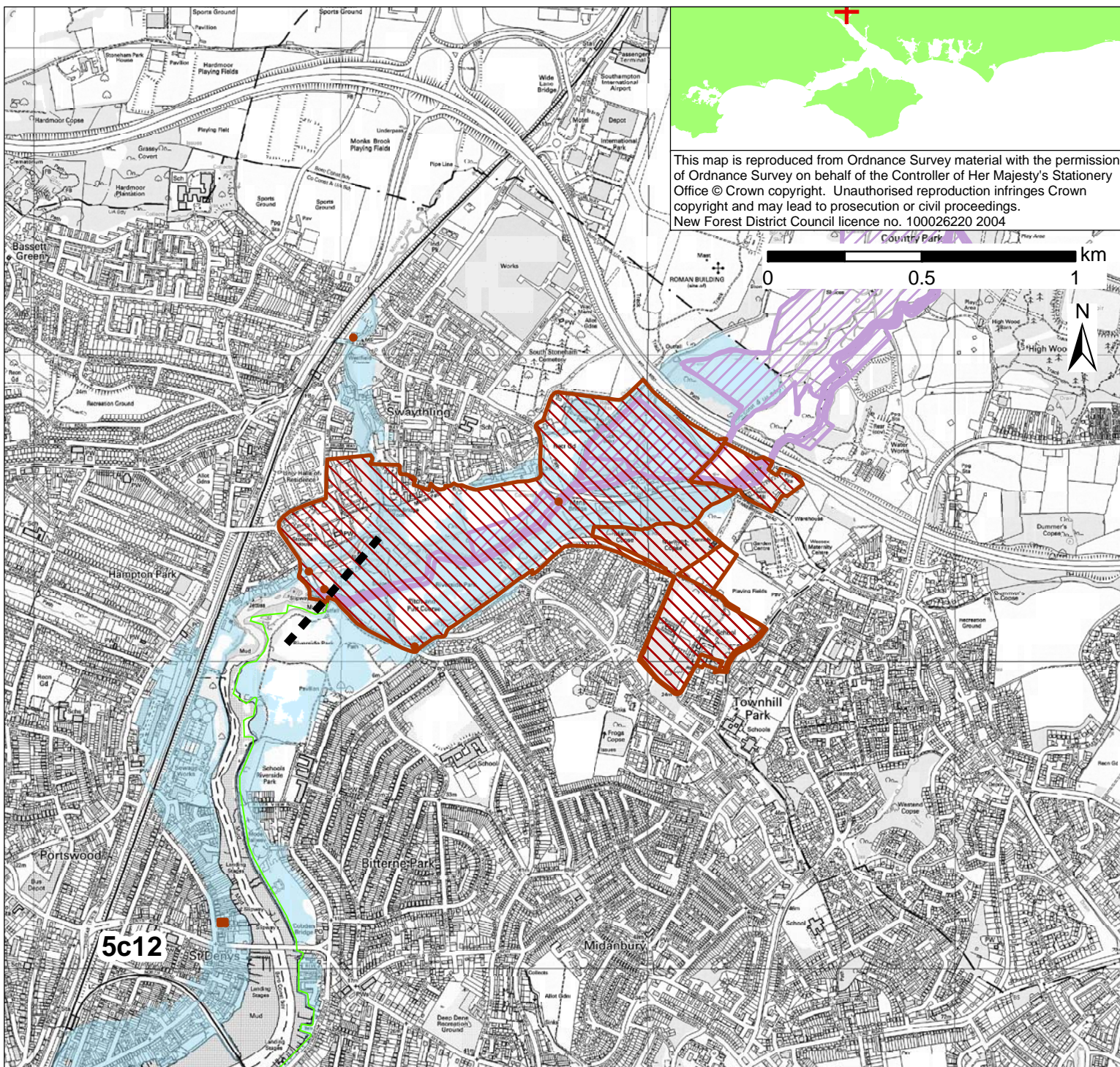
None. Public consultation on the draft Itchen, Weston, Netley and River Hamble Coastal Defence Strategy will confirm the final policy and management approach, which may require revisions to the final SMP policies

**Funding**

It is likely that central government funding could be secured for majority of identified works. As is currently the case, however, no public funding would be available for continued maintenance of defences by private owners or for the privately-owned port and industrial frontage.

**Further Studies (identified in Action Plan)**

Conclusion and approval of Itchen, Weston, Netley and River Hamble Coastal Defence Strategy  
Woodmill to Redbridge Flood and Coastal Erosion Risk Management Strategy

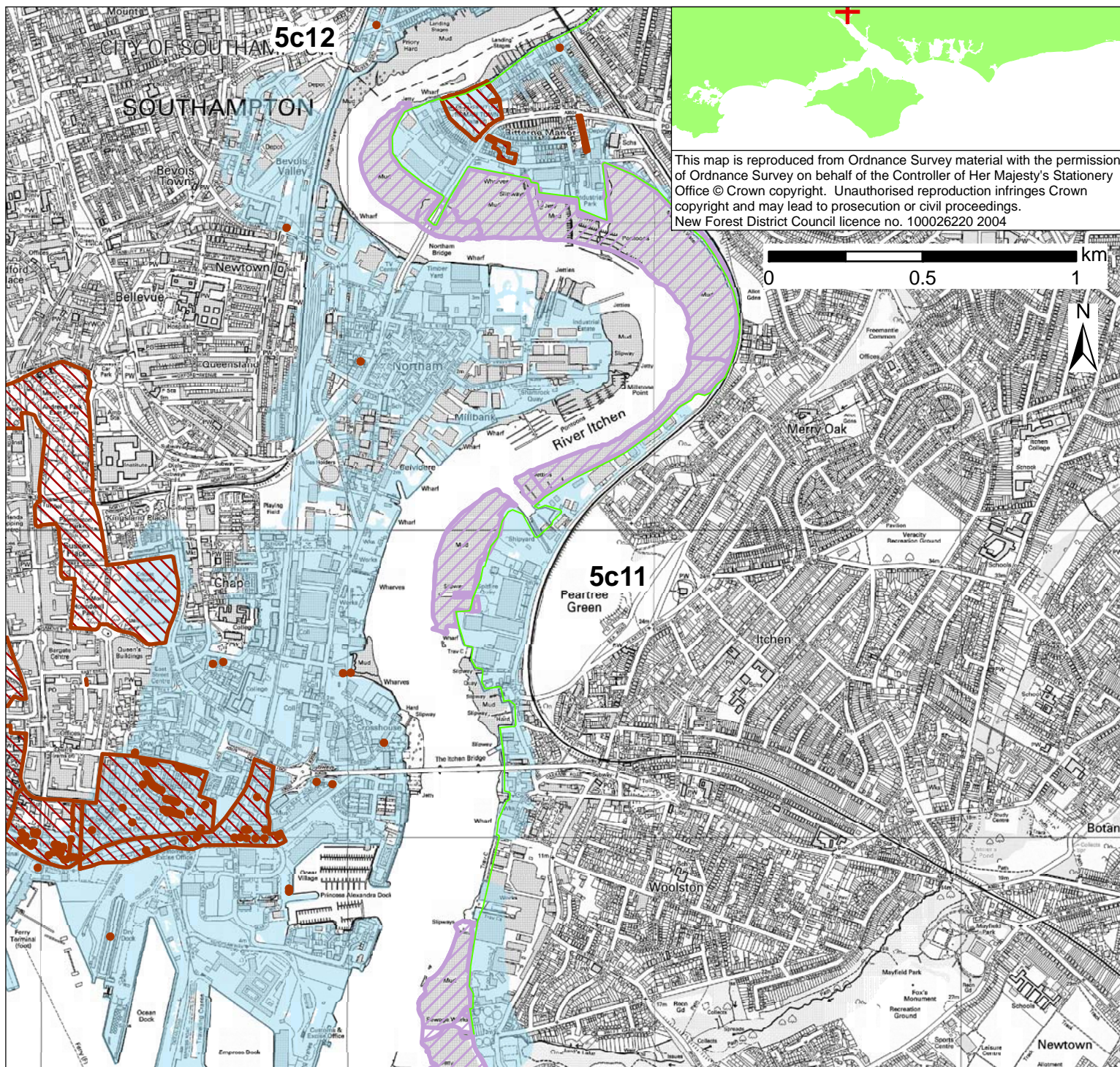


This map is reproduced from Ordnance Survey material with the permission of Ordnance Survey on behalf of the Controller of Her Majesty's Stationery Office © Crown copyright. Unauthorised reproduction infringes Crown copyright and may lead to prosecution or civil proceedings. New Forest District Council licence no. 100026220 2004

**POLICY**

From Present Day (up to 2025):	Medium-Term (2025 to 2055):	Long-Term (2055 to 2105):
Hold the Line	Hold the Line	Hold the Line

- Indicative erosion zone up to 2025
- Indicative erosion zone up to 2055
- Indicative erosion zone up to 2105
- Policy Unit Boundary
- International / National Designations
- Important Heritage Sites
- 2115 Indicative Floodplain (1 in 200 year) provided from PUSH

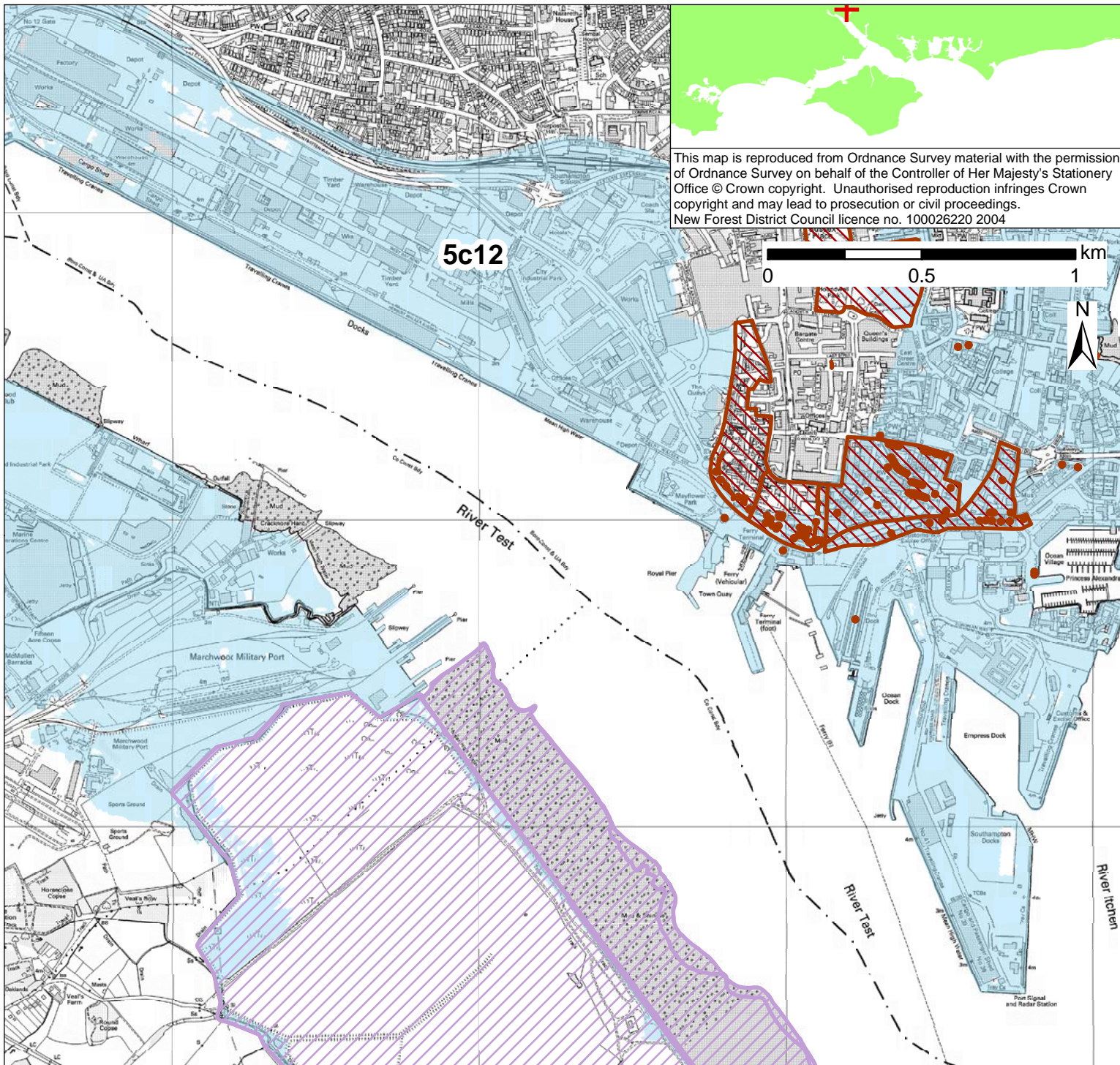


This map is reproduced from Ordnance Survey material with the permission of Ordnance Survey on behalf of the Controller of Her Majesty's Stationery Office © Crown copyright. Unauthorised reproduction infringes Crown copyright and may lead to prosecution or civil proceedings. New Forest District Council licence no. 100026220 2004

**POLICY**

From Present Day (up to 2025):	Medium-Term (2025 to 2055):	Long-Term (2055 to 2105):
Hold the Line	Hold the Line	Hold the Line

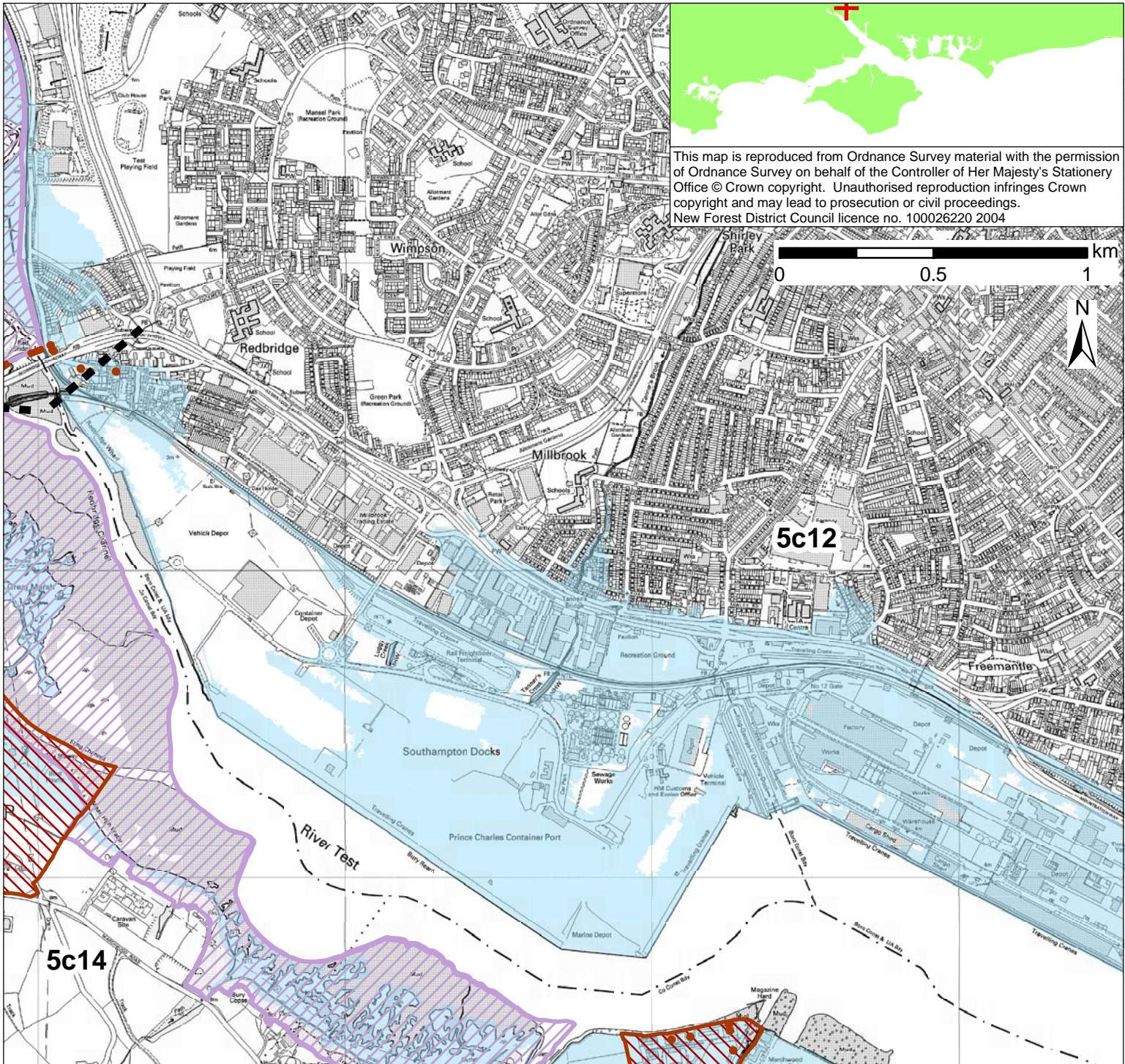
- Indicative erosion zone up to 2025
- Indicative erosion zone up to 2055
- Indicative erosion zone up to 2105
- Policy Unit Boundary
- International / National Designations
- Important Heritage Sites
- 2115 Indicative Floodplain (1 in 200 year) provided from PUSH



**POLICY**

From Present Day (up to 2025):	Medium-Term (2025 to 2055):	Long-Term (2055 to 2105):
Hold the Line	Hold the Line	Hold the Line

- Indicative erosion zone up to 2025
- Indicative erosion zone up to 2055
- Indicative erosion zone up to 2105
- Policy Unit Boundary
- International / National Designations
- Important Heritage Sites
- 2115 Indicative Floodplain (1 in 200 year) provided from PUSH



This map is reproduced from Ordnance Survey material with the permission of Ordnance Survey on behalf of the Controller of Her Majesty's Stationery Office © Crown copyright. Unauthorised reproduction infringes Crown copyright and may lead to prosecution or civil proceedings. New Forest District Council licence no. 100026220 2004

**POLICY**

From Present Day (up to 2025):	Medium-Term (2025 to 2055):	Long-Term (2055 to 2105):
Hold the Line	Hold the Line	Hold the Line

- Indicative erosion zone up to 2025
- Indicative erosion zone up to 2055
- Indicative erosion zone up to 2105
- International / National Designations
- Important Heritage Sites
- 2115 Indicative Floodplain (1 in 200 year) provided from PUSH
- Policy Unit Boundary