

Policy Unit 5C11 Weston Point to Woodmill Lane		
<p>Summary description of Policy Unit</p> <p>The areas of Southampton City on the east bank of the River Itchen has considerable development within the relatively restricted tidal floodplain, and comprises significant numbers of residential, industrial and commercial properties, including marinas, boat yards and wharfs, transport network and infrastructure, which are vital to the economy of the area and the region. The majority of the existing defences are privately owned and maintained. There are Scheduled Ancient Monuments, listed buildings, maritime features, registered Parks and Gardens and Conservation Area. Inter-tidal habitats of International, European and national nature conservation importance, and near shore structures provide high tide roost sites and support the adjacent and nearby SPA/Ramsar sites. The area is also designated a Local Nature Reserve. This frontage has been assessed in the draft River Itchen, Weston Shore, Netley and Hamble Coastal Defence Strategy, which has recommended a HTL policy for the first and second epochs and an NAI policy for epoch 3.</p>		
Final policy options		SMP1 Ref ITCH 4 & 3 Hold the Line
Epoch 1 From Present Day (up to 2025)	Epoch 2 Medium Term (2025 to 2055)	Epoch 3 Long Term (2055 to 2105)
Hold the Line	Hold the Line	No Active Intervention* (further detailed studies required for management of site)
<p>Summary of rationale behind final policy options</p> <p>The final policy options are taken from and consistent with the draft Itchen, Weston, Netley and River Hamble Coastal Defence Strategy.</p>		
<p>The policy intention in the short and medium-term is to maintain the current line of defence to provide flood protection to the conurbations on the east bank of the River Itchen, with significant numbers of residential, commercial and industrial developments that are located within the relatively restricted tidal floodplain. Improvements and maintenance of the revetments and seawalls would be required to reduce the variation in the standard of protection provided by the largely privately owned defences. It is the policy intention that currently undefended sections will remain undefended.</p>		<p>In the long-term it may be uneconomical to continue to defend the entire frontage due to the increasing risk of coastal flooding, Property level defences or localised lengths of defences to protect properties or heritage sites may be more appropriate. The * in epoch 3 indicates that further assessments that address the economic, environmental and social implications of flood management issues for the frontage are required to determine adaptation and management options in the long term.</p>
<p>Due to the environmental designations within Southampton Water and the River Itchen, holding the defence line will continue to contribute towards the loss of European and national nature conservation designated habitats such as inter-tidal foreshore habitats, through coastal squeeze. These losses will need to be mitigated within the same designated area or compensated for elsewhere and delivered through the Regional Habitat Creation Programme. Opportunities for habitat mitigation and compensation have been detailed within the Appropriate Assessment of the final policies.</p>		

Policy changes through Public Consultation

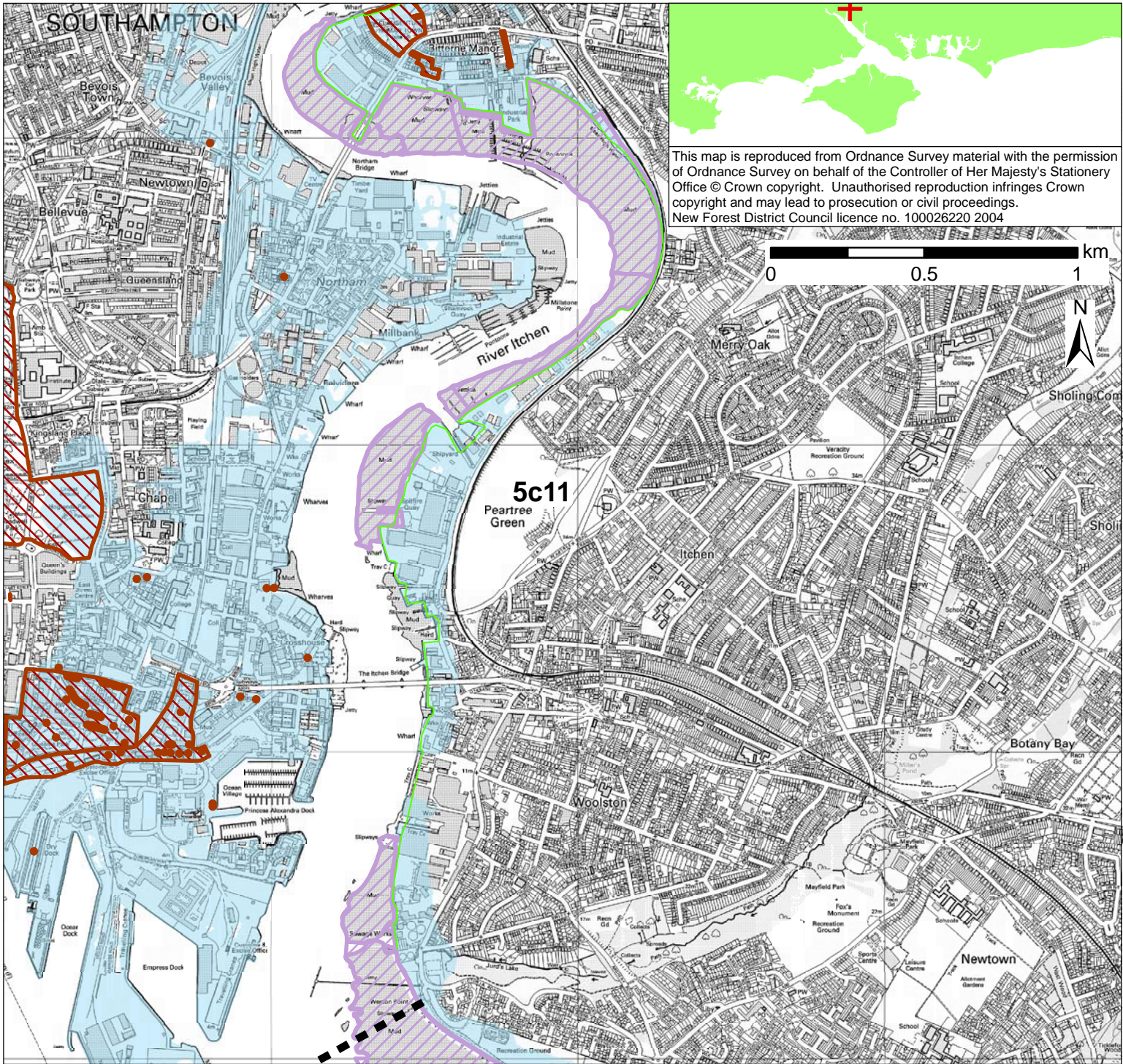
None. Public consultation on the draft Itchen, Weston, Netley and River Hamble Coastal Defence Strategy will confirm the final policy and management approach, which may require revisions to the final SMP policies

Funding

It is likely that central government funding could be secured for majority of identified works. As is currently the case, however, no public funding would be available for continued maintenance of defences by private owners.

Further Studies (identified in Action Plan)

Conclusion and approval of Itchen, Weston, Netley and River Hamble Coastal Defence Strategy
Woodmill to Redbridge Flood and Coastal Erosion Risk Management Strategy

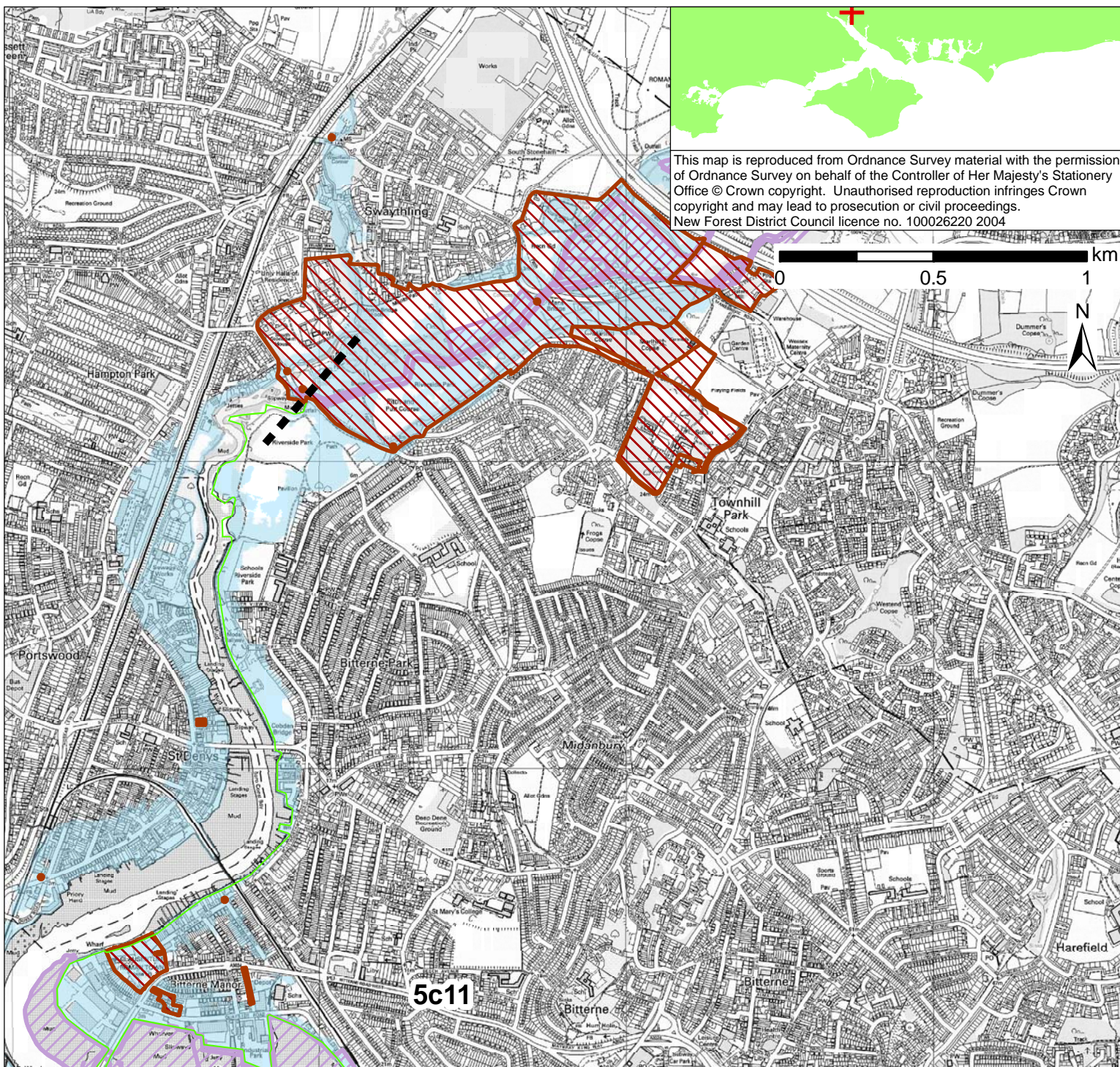


This map is reproduced from Ordnance Survey material with the permission of Ordnance Survey on behalf of the Controller of Her Majesty's Stationery Office © Crown copyright. Unauthorised reproduction infringes Crown copyright and may lead to prosecution or civil proceedings. New Forest District Council licence no. 100026220 2004

POLICY

From Present Day (up to 2025):	Medium-Term (2025 to 2055):	Long-Term (2055 to 2105):
Hold the Line	Hold the Line	No Active Intervention*
		*Requirement for more detailed study (for management of site that recognises coastal change and investigates property level defence options)

- Indicative erosion zone up to 2025
- Indicative erosion zone up to 2055
- Indicative erosion zone up to 2105
- Policy Unit Boundary
- International / National Designations
- Important Heritage Sites
- 2115 Indicative Floodplain (1 in 200 year) provided from PUSH



POLICY

From Present Day (up to 2025):	Medium-Term (2025 to 2055):	Long-Term (2055 to 2105):
Hold the Line	Hold the Line	No Active Intervention*
		*Requirement for more detailed study (for management of site that recognises coastal change and investigates property level defence options)

- Indicative erosion zone up to 2025
- Indicative erosion zone up to 2055
- Indicative erosion zone up to 2105
- Policy Unit Boundary
- International / National Designations
- Important Heritage Sites
- 2115 Indicative Floodplain (1 in 200 year) provided from PUSH