

Policy Unit 5C04 Bursledon Bridge to Botley & Curbridge to Satchell Marshes

Summary description of Policy Unit

A largely undeveloped frontage comprising agricultural grade 4 land on east bank of the River Hamble, and grades 1 and 3 on west bank. The tidal floodplain is relatively restricted due to the topography as the wooded river banks rise quite steeply or are stepped in elevation. West bank includes Hampshire County Council owned and managed Manor Farm Country Park, and south of Bursledon Bridge are boat yards and marina related assets. The majority of the frontage is undefended and privately owned, where there are defences they are privately maintained. Inter-tidal habitats of International, European and national nature conservation importance, provide high tide roost sites and support the adjacent and nearby SPA/Ramsar sites. Heritage features include Protected Wreck site (Grace Dieu), Scheduled Ancient Monuments, listed buildings and maritime features, along with Conservation Areas. The draft River Itchen, Weston Shore, Netley and Hamble Coastal Defence Strategy has recommended an NAI policy for the frontage, but with localised HTL on the east bank south of Bursledon Bridge to Lands End Lane.

Final policy options

SMP1 Ref
HAM2 Managed Realignment
HAM3 No Active Intervention

Epoch 1 From Present Day (up to 2025)	Epoch 2 Medium Term (2025 to 2055)	Epoch 3 Long Term (2055 to 2105)
No Active Intervention	No Active Intervention	No Active Intervention

Summary of rationale behind final policy options

The final policy options are taken from and consistent with the draft Itchen, Weston, Netley and River Hamble Coastal Defence Strategy, although the frontage upstream of Bursledon bridge was not included.

The extent of the tidal flood risk area is relatively constrained by the natural topography particularly within the upper reaches of the River Hamble, however, as sea levels rise and the tidal influence stretches further upstream there may be the potential for flooding of the low lying agricultural hinterland. There is no requirement or intention to intervene on the undefended and largely undeveloped frontages which are permitted to adapt naturally to changing coastal conditions. Shore-side developments south of the bridge, such as marinas, may continue to maintain their defences through permissive development rights of private landowners. Property level flood defences may also be appropriate where flood risk will increase in the longer-term.

Due to the environmental designations within the River Hamble, losses of European and national nature conservation designated habitats, such as inter-tidal habitats, will need to be compensated for elsewhere and delivered through the Regional Habitat Creation Programme. Opportunities for habitat mitigation and compensation have been detailed within the Appropriate Assessment of the final policies.

Policy changes through Public Consultation

None. Public consultation on the draft Itchen, Weston, Netley and River Hamble Coastal Defence Strategy will confirm the final policy and management approach, which may require revisions to the final SMP policies.

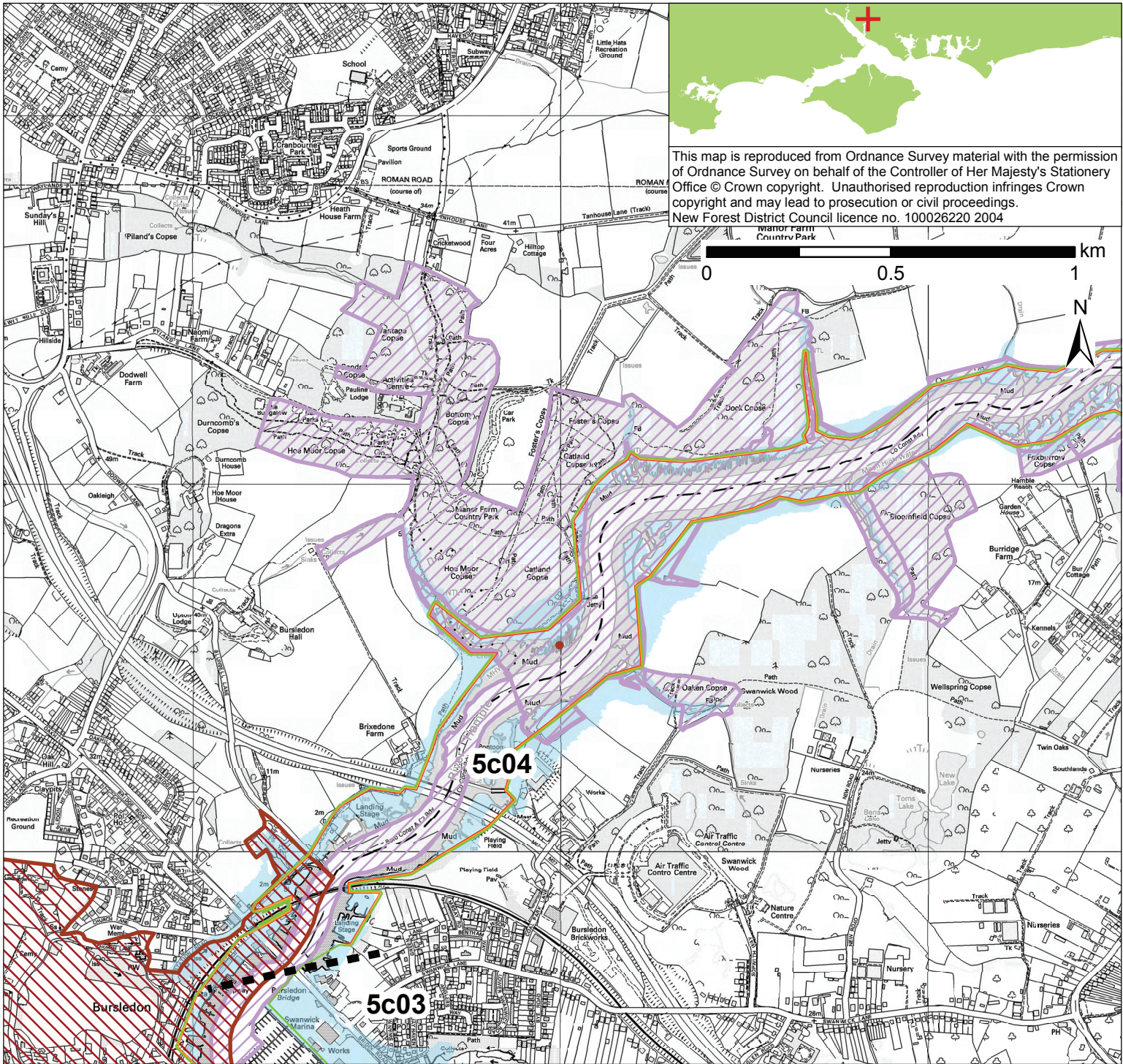
An Information Note for landowners, planners and developers on privately owned coastal defences and coastal planning issues has been produced.

Funding

No defence works are identified. As is currently the case, no public funding would be available for continued maintenance of defences by private owners.

Further Studies (identified in Action Plan)

Conclusion and approval of Itchen, Weston, Netley and River Hamble Coastal Defence Strategy
Solent-wide network of high tide roost site study

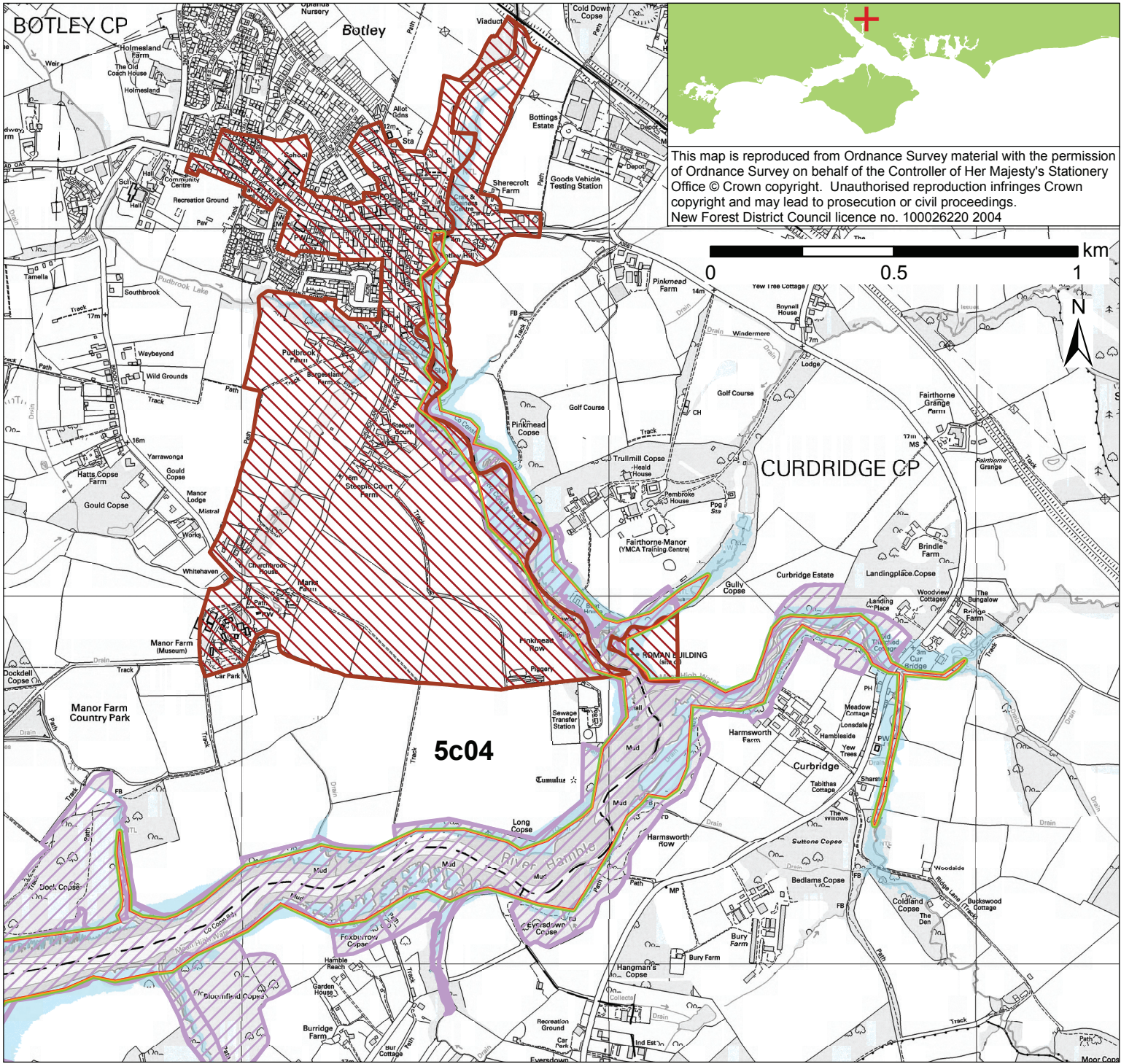


This map is reproduced from Ordnance Survey material with the permission of Ordnance Survey on behalf of the Controller of Her Majesty's Stationery Office © Crown copyright. Unauthorised reproduction infringes Crown copyright and may lead to prosecution or civil proceedings. New Forest District Council licence no. 100026220 2004

POLICY

From Present Day (up to 2025):	Medium-Term (2025 to 2055):	Long-Term (2055 to 2105):
No Active Intervention	No Active Intervention	No Active Intervention

- Indicative erosion zone up to 2025
- Indicative erosion zone up to 2055
- Indicative erosion zone up to 2105
- Policy Unit Boundary
- International / National Designations
- Important Heritage Sites
- 2115 Indicative Floodplain (1 in 200 year) provided from PUSH

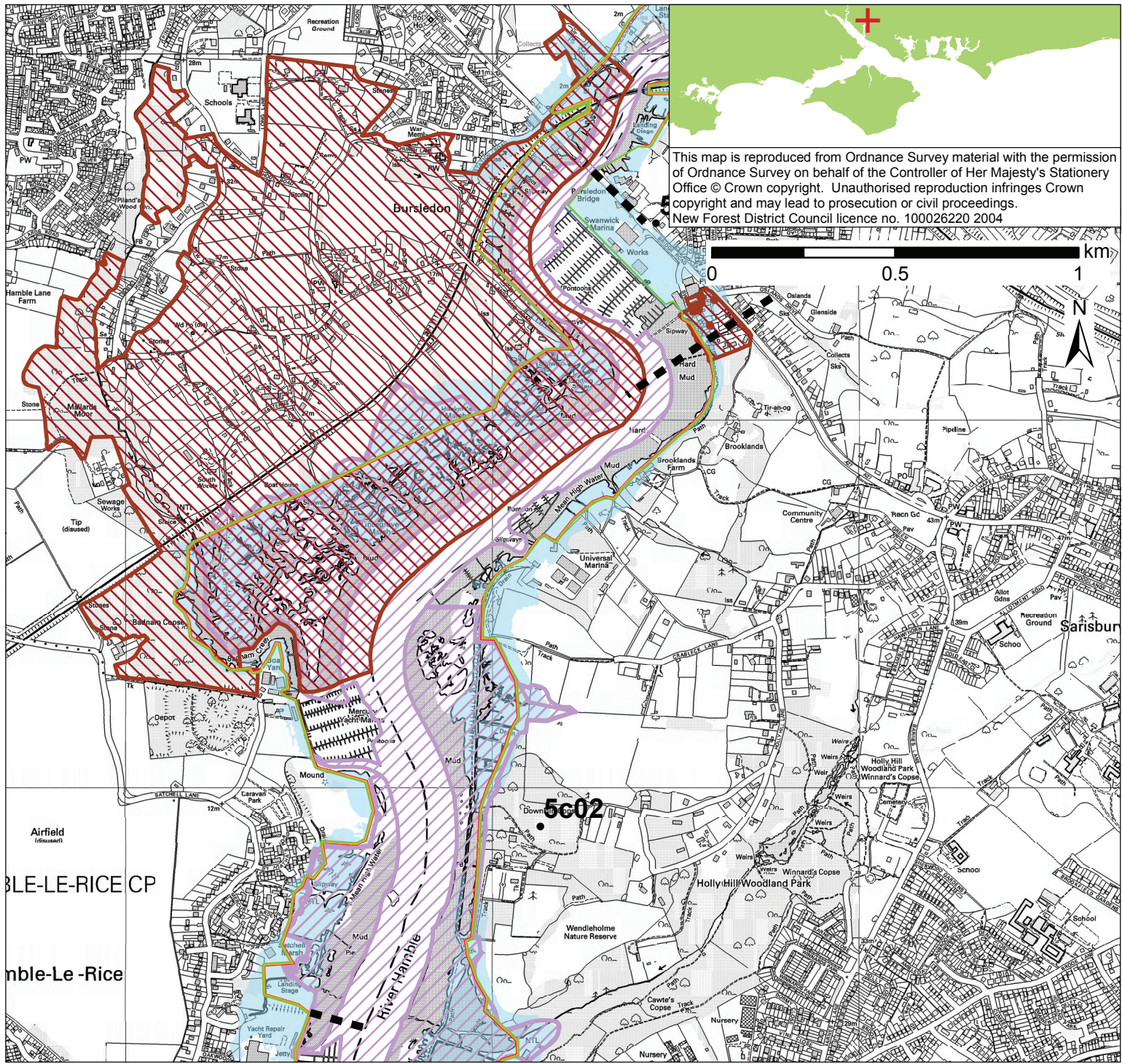


This map is reproduced from Ordnance Survey material with the permission of Ordnance Survey on behalf of the Controller of Her Majesty's Stationery Office © Crown copyright. Unauthorised reproduction infringes Crown copyright and may lead to prosecution or civil proceedings. New Forest District Council licence no. 100026220 2004

POLICY

From Present Day (up to 2025):	Medium-Term (2025 to 2055):	Long-Term (2055 to 2105):
No Active Intervention	No Active Intervention	No Active Intervention

- Indicative erosion zone up to 2025
- Indicative erosion zone up to 2055
- Indicative erosion zone up to 2105
- Policy Unit Boundary
- International / National Designations
- Important Heritage Sites
- 2115 Indicative Floodplain (1 in 200 year) provided from PUSH



This map is reproduced from Ordnance Survey material with the permission of Ordnance Survey on behalf of the Controller of Her Majesty's Stationery Office © Crown copyright. Unauthorised reproduction infringes Crown copyright and may lead to prosecution or civil proceedings. New Forest District Council licence no. 100026220 2004

POLICY

From Present Day (up to 2025):	Medium-Term (2025 to 2055):	Long-Term (2055 to 2105):
No Active Intervention	No Active Intervention	No Active Intervention

- Indicative erosion zone up to 2025
- Indicative erosion zone up to 2055
- Indicative erosion zone up to 2105
- Policy Unit Boundary
- International / National Designations
- Important Heritage Sites
- 2115 Indicative Floodplain (1 in 200 year) provided from PUSH