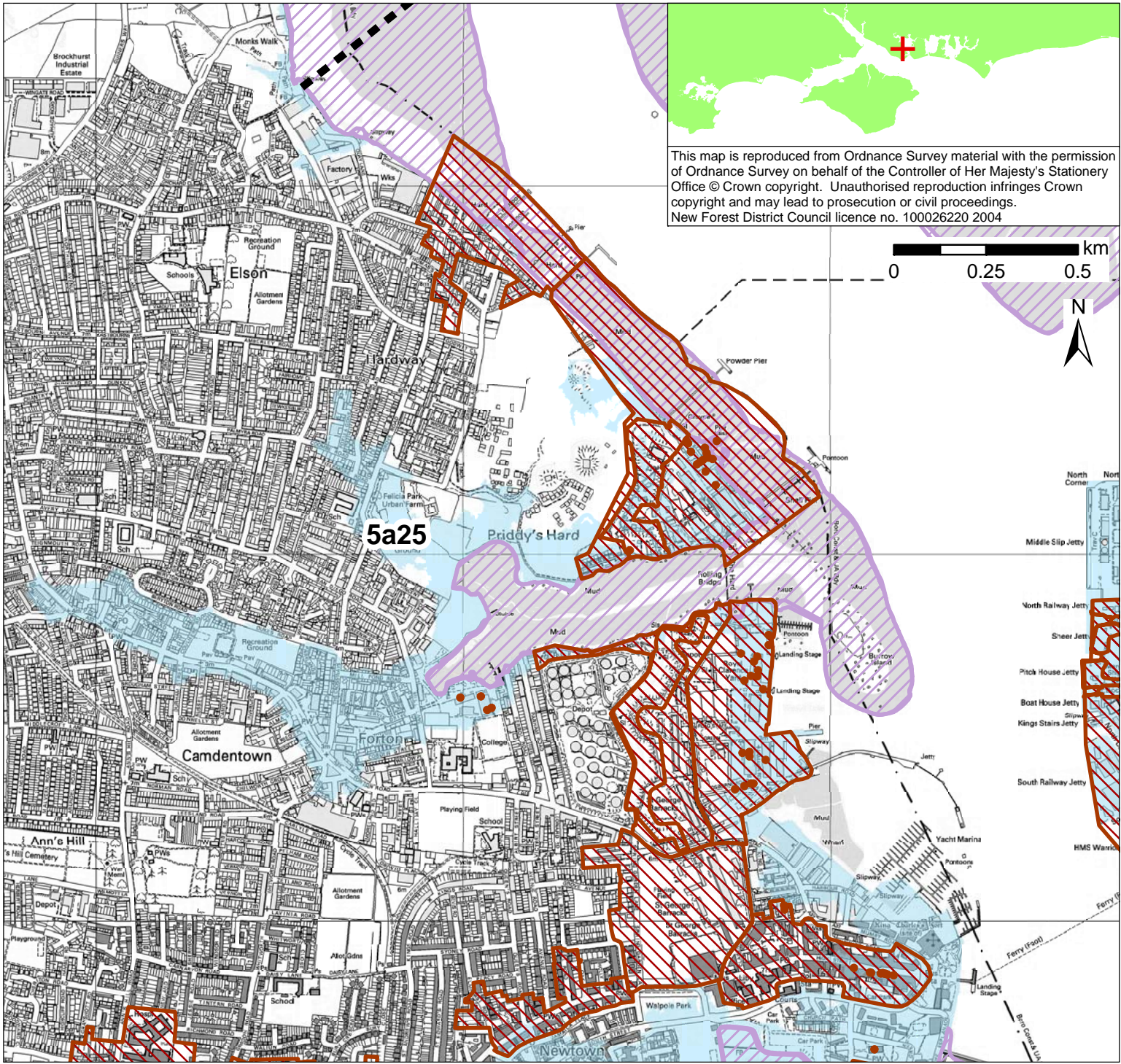


Policy Unit 5A25 Quay Lane to Portsmouth Harbour entrance		
Summary description of Policy Unit		
<p>The developed area within the tidal floodplain includes a wide range of assets and facilities, including residential properties in Gosport, transport network, and commercial assets such as marinas, along with significant MOD assets. Part of the shoreline and hinterland area is located on a former landfill site. The existing defences are owned and maintained by the MOD, Local Authority and private individuals. Analysis of shoreline erosion (see Appendix C5) indicates the rate and scale of coastal processes are less within the harbours than on the open coast. Inter-tidal habitats of International, European and national nature conservation importance provide high tide roost sites and support the adjacent and nearby SPA/Ramsar sites. Heritage features include Scheduled Ancient Monuments, listed and historic buildings, Parks and Gardens, Monuments and maritime features, along with Conservation Areas.</p>		
Final policy options		SMP1 Ref n/a
Epoch 1 From Present Day (up to 2025)	Epoch 2 Medium Term (2025 to 2055)	Epoch 3 Long Term (2055 to 2105)
Hold the Line	Hold the Line	Hold the Line
Summary of rationale behind final policy options		
<p>The key drivers to continuing to hold the existing defence line will be to provide flood protection to the developed conurbation within the tidal floodplain that includes the residential centre of Gosport, transport networks critical to Gosport, a wide range of MOD assets and facilities, and commercial assets such as marinas.</p> <p>Due to the environmental designations within Portsmouth Harbour, continued maintenance of defence structures will result however, in the continued loss of European and national nature conservation designated habitats such as inter-tidal foreshore habitats, through coastal squeeze. These losses will need to be mitigated within the same designated area or compensated for elsewhere and delivered through the Regional Habitat Creation Programme. Opportunities for habitat mitigation and compensation have been detailed within the Appropriate Assessment of the final policies.</p>		
Policy changes through Public Consultation		
None		
Funding		
It is likely that central government funding could be secured for identified works, although funding through the MOD would also need to be secured for MOD defences.		
Further Studies (identified in Action Plan)		
Portsmouth Harbour entrance to Portchester Flood and Coastal Erosion Risk Management Strategy		

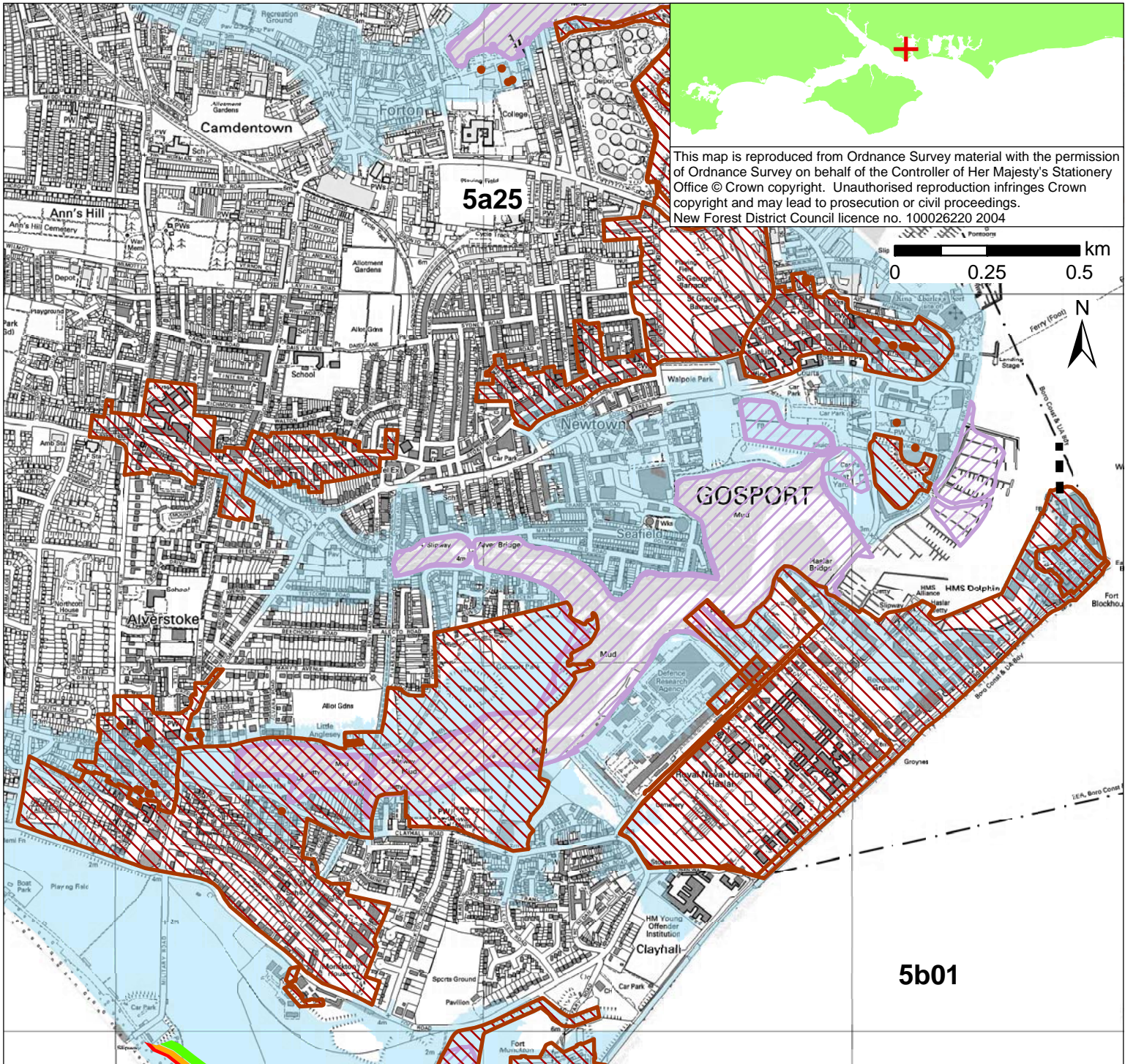


This map is reproduced from Ordnance Survey material with the permission of Ordnance Survey on behalf of the Controller of Her Majesty's Stationery Office © Crown copyright. Unauthorised reproduction infringes Crown copyright and may lead to prosecution or civil proceedings. New Forest District Council licence no. 100026220 2004

POLICY

From Present Day (up to 2025):	Medium-Term (2025 to 2055):	Long-Term (2055 to 2105):
Hold the Line	Hold the Line	Hold the Line

- Indicative erosion zone up to 2025
- Indicative erosion zone up to 2055
- Indicative erosion zone up to 2105
- Policy Unit Boundary
- International / National Designations
- Important Heritage Sites
- 2115 Indicative Floodplain (1 in 200 year) provided from PUSH



This map is reproduced from Ordnance Survey material with the permission of Ordnance Survey on behalf of the Controller of Her Majesty's Stationery Office © Crown copyright. Unauthorised reproduction infringes Crown copyright and may lead to prosecution or civil proceedings. New Forest District Council licence no. 100026220 2004

POLICY

From Present Day (up to 2025):	Medium-Term (2025 to 2055):	Long-Term (2055 to 2105):
Hold the Line	Hold the Line	Hold the Line

- Indicative erosion zone up to 2025
- Indicative erosion zone up to 2055
- Indicative erosion zone up to 2105
- Policy Unit Boundary
- International / National Designations
- Important Heritage Sites
- 2115 Indicative Floodplain (1 in 200 year) provided from PUSH